



e^{fe}®
g l a s s

2013-2014

INDEX

Opal Camlar_____

Opal Glass

Page : 02 - 12



El Dekorasyonlu Üfleme Camlar_____

Blown Glass With Hand Decoration

Page : 13 - 27



Transparan Boyalı Üfleme Camlar_____

Transparent Painted Blown Glass

Page : 28 - 32



Endüstriyel Otomasyon Camlar_____

Industrial Automation Glass

Page : 33 - 57



Armatür Camlar_____

Plaffonier Glass

Page : 58 - 64



El Yapımı Camlar_____

Handwork Glass

Page : 65 - 66



e fe[®]
g l a s s

Tesisatlar_____

Lighting Fixture Equipments

Page : 67 - 68



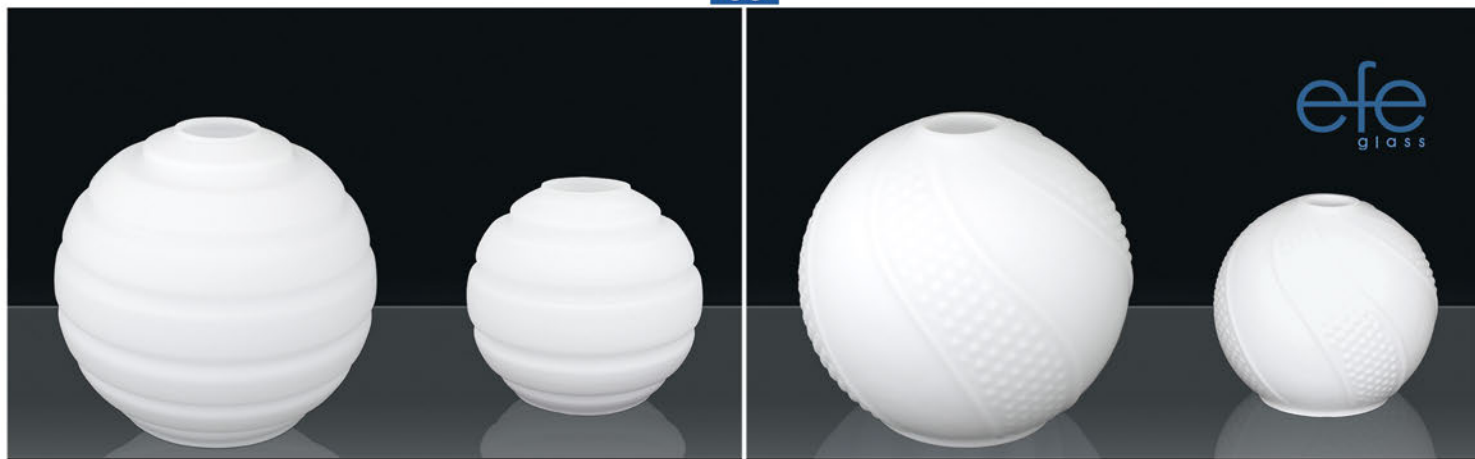


Opal Camlar

Opal Glass

camin
efe'ndisi
glass



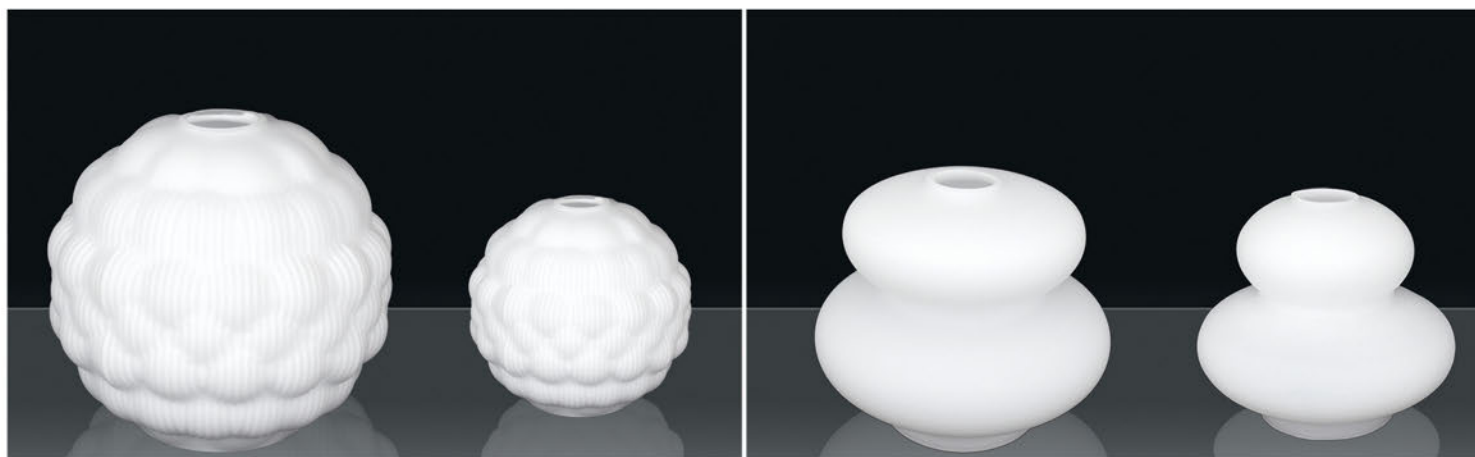


2046-A Opal h:20 - Ø:20

2046-B Opal h:12 - Ø:14

2045-A Opal h:20 - Ø:20

2045-B Opal h:11 - Ø:13



2035-A Opal h:20 - Ø:21

2035-B Opal h:13 - Ø:15(E27)

2042-A Opal h:15 - Ø:23

2042-B Opal h:14 - Ø:21



2013 Opal h:21 - Ø:20

2013-B Opal h:11 - Ø:14(E27)

1111 Opal h:30 - Ø:30

1111-A Opal h:20 - Ø:20

1111-B Opal h:13 - Ø:13(E27)

1111-C Opal h:10 - Ø:10(E14)



1933 Opal h:18 - Ø:35

1933-A Opal h:15 - Ø:30

1933-B Opal h:12 - Ø:25

1933-C Opal h:12 - Ø:19

2036-A Opal h:20.5 - Ø:24

2036-B Opal h:13 - Ø:13.5



1914 Opal h:19 - Ø:24

1914-C Opal h:12 - Ø:13 (E27)

2008 Opal h:31 - Ø:21

2008-A Opal h:25 - Ø:15

efe
glass

1120 Opal h:30 - Ø:16

120 Opal h:25 - Ø:13

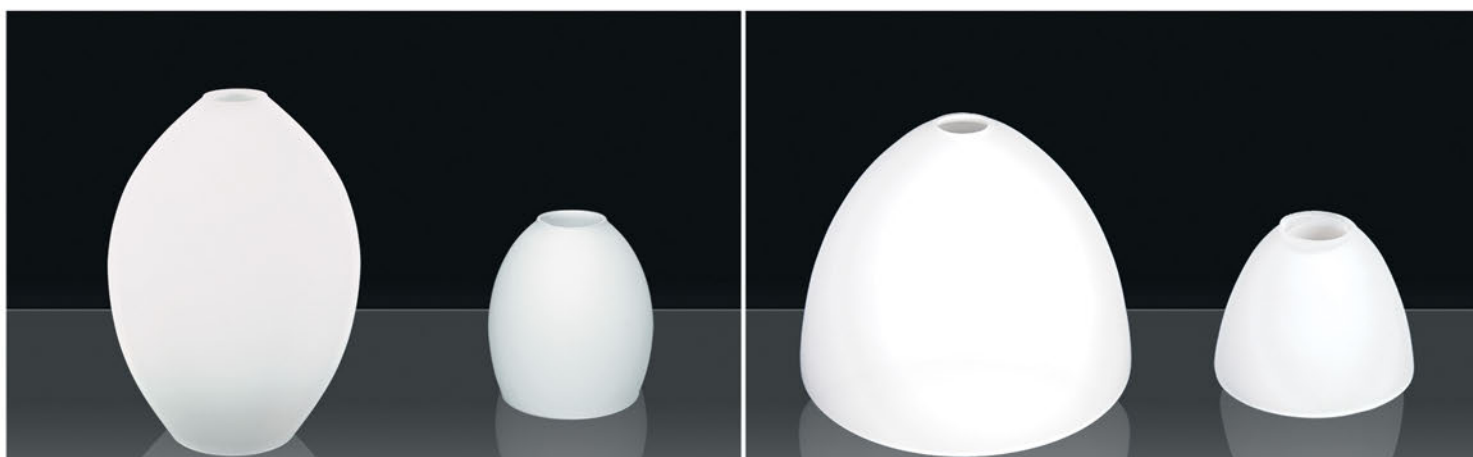
1906-A Opal h:33 - Ø:19
1906-B Opal h:32 - Ø:15

1906-C Opal h:16 - Ø:10(E27)



2007 Opal h:30 - Ø:10-15(E27)

2007-A Opal h:16 - Ø:10-15(E27)

444 Opal h:23 - Ø:15
444-A Opal h:20 - Ø:11
444-B Opal h:18 - Ø:9444-C Opal h:10 - Ø:9(E14)
444-D Opal h:12 - Ø:9(E27)116 Opal h:30 - Ø:23
116-A Opal h:26 - Ø:19116-B Opal h:10 - Ø:8
1116-C Opal h:10 - Ø:9(E14)
116-C Opal h:13 - Ø:12(E27)1936 Opal h:23 - Ø:31
1936-A Opal h:18 - Ø:24

1936-C Opal h:11 - Ø:14(E27)



1916 Opal h:26 - Ø:35
1916-A Opal h:22 - Ø:30

1916-B Opal h:18 - Ø:25



1942 Opal h:25 - Ø:35
1942-A Opal h:22 - Ø:30

1942-B Opal h:20 - Ø:25



113 Opal h:17 - Ø:32
113-A Opal h:14 - Ø:22

113-C Opal h:10 - Ø:11(E14)



122 Opal h:20 - Ø:25

122-B Opal h:12 - Ø:15(E14)



117 Opal h:18 - Ø:32
117-A Opal h:17 - Ø:25

117-B Opal h:14 - Ø:14(E27)



1921 Opal h:18 - Ø:17

1921-A Opal h:12 - Ø:13



1973 Opal h:20 - Ø:30
1973-A Opal h:17 - Ø:25

1973-B Opal h:10 - Ø:14



123-A Opal h:19 - Ø:20

123-B Opal h:12 - Ø:13(E14)



2009 Opal h:18 - Ø:19

2009-A Opal h:10 - Ø:12(E27)
2009-B Opal h:10 - Ø:10(E14)118 Opal h:30 - Ø:23
118-A Opal h:26 - Ø:19

118-B Opal h:11 - Ø:14(E14)



110 Opal h:25 - Ø:23

110-A Opal h:13 - Ø:14(E27)



2080 Opal h:32 - Ø:22-13

2080-A Opal h:16 - Ø:15-10(E27)

1932 Opal h:24 - Ø:35
1932-A Opal h:21 - Ø:30

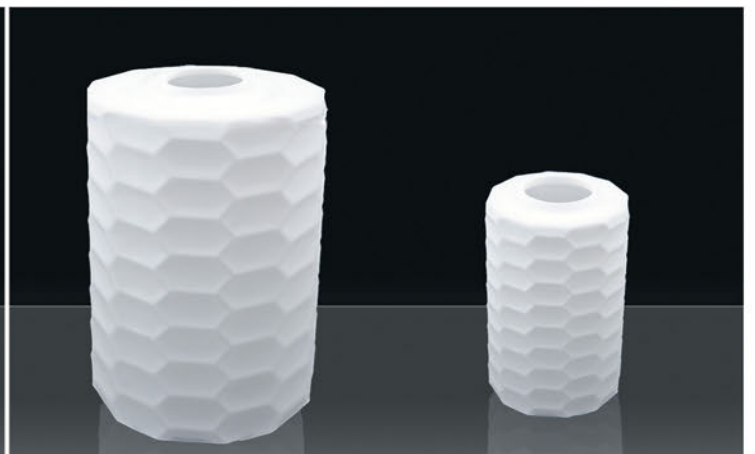
1932-B Opal h:19 - Ø:25

048 Big Opal h:24 - Ø:17
048 Opal h:20 - Ø:14
048-A Opal h:18 - Ø:12

048-B Opal h:13 - Ø:11(E27)



2011-A Opal h:18 - Ø:18

2011-B Opal h:9 - Ø:14(E27)
2011-C Opal h:10 - Ø:14(E14)
2011-D Opal h:10 - Ø:11(E14)

1974-B Opal h:29 - Ø:14

1974-E Opal h:15 - Ø:10(E27)



446-A Opal h:22 - Ø:19

446-B Opal h:16 - Ø:14(E27)

2044-A Opal h:20 - Ø:24

2044-B Opal h:15 - Ø:17



2012-A Opal h:21 - Ø:17

2012-B Opal h:13 - Ø:12(E27)

121 Opal h:28 - Ø:14

121-A Opal h:16 - Ø:10(E27)



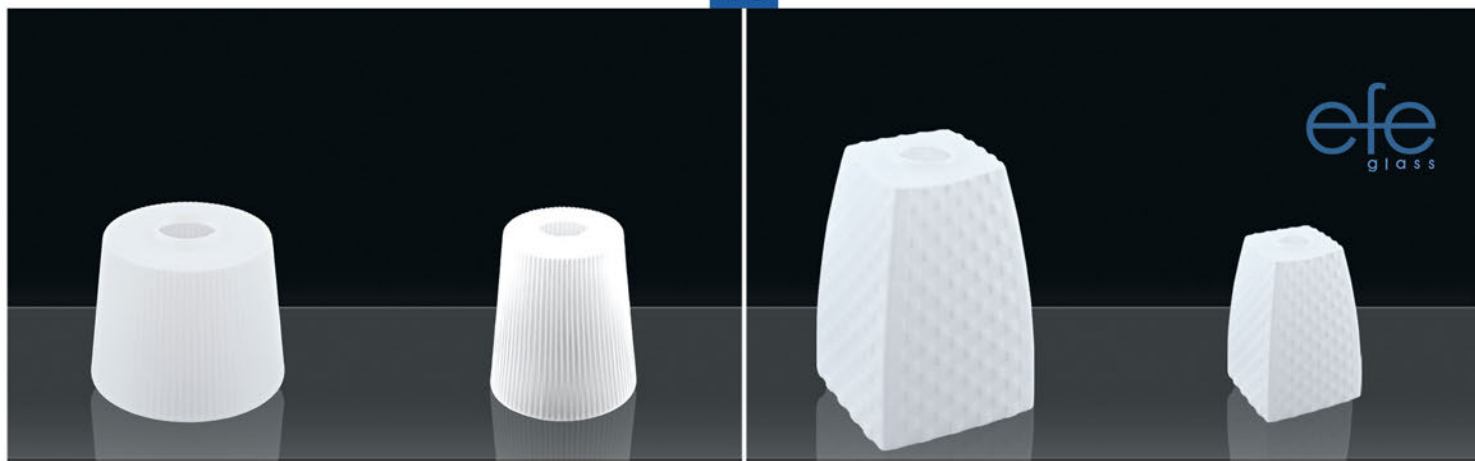
1972 Opal h:25 - Ø:20

1972-A Opal h:14 - Ø:14(E27)

1117 Opal h:30 - Ø:28
1117-A Opal h:20 - Ø:20

1117-B Opal h:15 - Ø:13(E27)

1934 Opal h:30 - Ø:27(E27)
1934-A Opal h:22 - Ø:17(E27)1934-B Opal h:14 - Ø:12(E27)
1934-C Opal h:11 - Ø:9(E14)1934-D Opal
h:13 - Ø:12(E27)333 Opal h:29 - Ø:24
333-A Opal h:29 - Ø:19
333-B Opal h:29 - Ø:14333-B Opal h:29 - Ø:14
333-C Opal h:29 - Ø:10(E27)
333-E Opal h:15 - Ø:10(E27)



2031-B Opal h:13 - Ø:16

2031-C Opal h:13 - Ø:11

2029-Opal h:22 - Ø:15

2029-B Opal h:9 - Ø:12(E27)

1909-Opal h:30 - Ø:30
1909-A Opal h:20 - Ø:20
1909-B Opal h:13 - Ø:13(E27)

1909-C Opal h:10 - Ø:10(E27)

2016-A Opal h:20 - Ø:12

2043-A Opal h:23 - Ø:15.5



2030 Opal h:22 - Ø:16-11

2027 Opal h:29 - Ø:17

1121 Opal h:29 - Ø:13

2006 Opal h:27 - Ø:10-20



2038-A Opal h:26.5 - Ø:14

2047-A Opal h:18 - Ø:12.5

2034-A Opal h:22 - Ø:17

2040-A Opal h:22 - Ø:20



1921-B Opal h:13 - Ø:11(E27)



2033-B Opal h:12 - Ø:14



2080-D Opal h:13 - Ø:13(E27)



334-B Opal h:16 - Ø:14(E27)



2039 Opal h:13 - Ø:14(E27)



110-C Opal h:12 - Ø:10(E27)



1935-C Opal h:15 - Ø:12(E27)



023 Opal h:17 - Ø:11



305-Y Opal h:13 - Ø:9(E14)



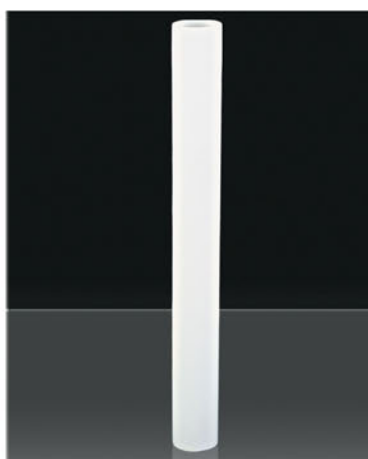
119-Y Opal h:11 - Ø:9(E14)



119-D Opal h:10 - Ø:8(E14)



4444-C Opal h:8 - Ø:8(E14)



333-033 Opal h:40 - Ø:6



011 Opal h:17 - Ø:4(E14)



012 Opal h:16 - Ø:5(E14)



010 Opal h:16 - Ø:4(E14)



2050 Opal h:18 - Ø:25



2051 Opal h:19 - Ø:23



2052 Opal h:19 - Ø:19



2037 Opal h:31 - Ø:32



2037-A Opal h:21 - Ø:22



1940 Opal h:37 - Ø:29



1940-A Opal h:30 - Ø:28
1940-B Opal h:22 - Ø:17



1911 Opal Big h:40 - Ø:40
1911 Opal h:35 - Ø:35
1911-A Opal h:30 - Ø:30



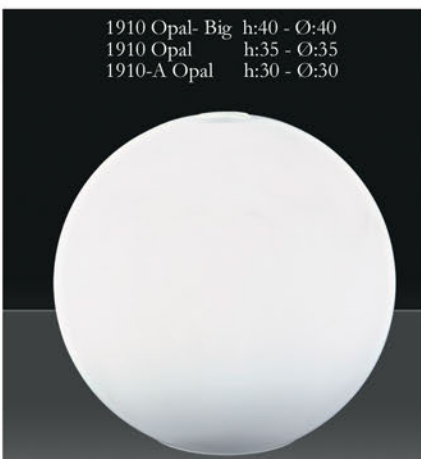
1911-B Opal h:25 - Ø:25
1911-C Opal h:20 - Ø:20
1911-Z Opal h:18 - Ø:18
1911-D Opal h:15 - Ø:15
1911-M Opal h:13 - Ø:13
1911-E Opal h:10 - Ø:10
1911-F Opal h: 8 - Ø: 8
1911-G Opal h: 6 - Ø: 6(G-9)



1900 Opal h:19 - Ø:35
1900-A Opal h:17 - Ø:30



1900-B Opal h:13 - Ø:25



1910 Opal- Big h:40 - Ø:40
1910 Opal h:35 - Ø:35
1910-A Opal h:30 - Ø:30



1910-B Opal h:25 - Ø:25
1910-C Opal h:20 - Ø:20
1910-D Opal h:15 - Ø:18
1910-E Opal h:12 - Ø:14(E-27)
1910-F Opal h:10 - Ø:11(E-14)
1910-G Opal h: 7 - Ø: 8(E-14)
1910-H Opal h: 6 - Ø: 7(G4-G9)



2049 -A Opal h:30 - Ø:30
2049-B Opal h:20 - Ø:20



2048 Opal h:23 - Ø:20

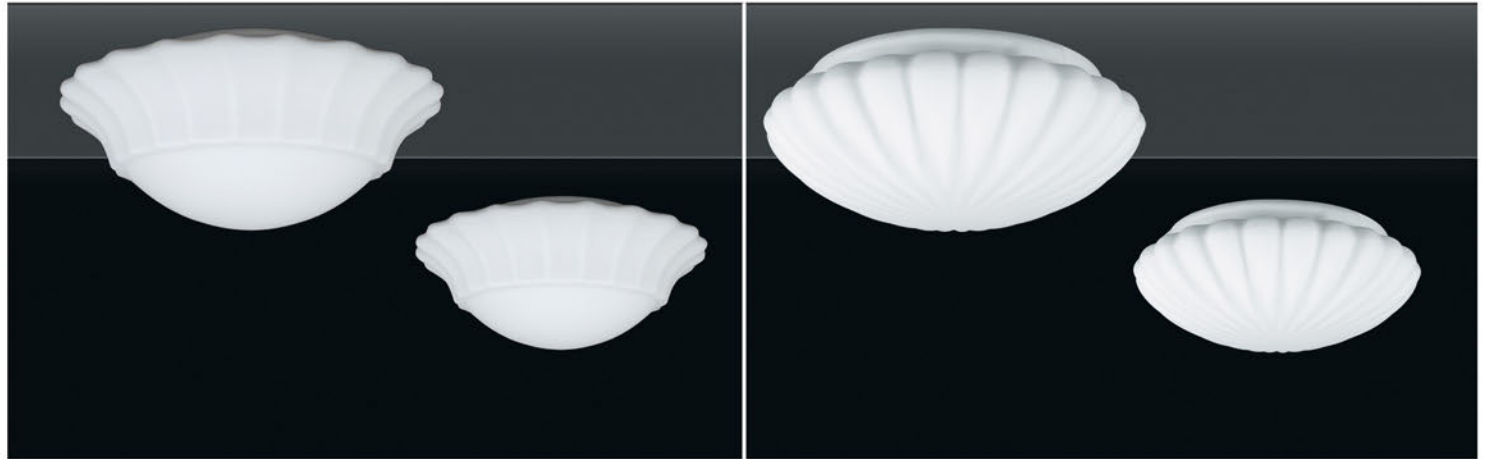


2018 Opal h:14 - Ø:43

2018-A Opal h:13 - Ø:30

2222 Opal h:28 - Ø:40

2222-A Opal h:24 - Ø:30

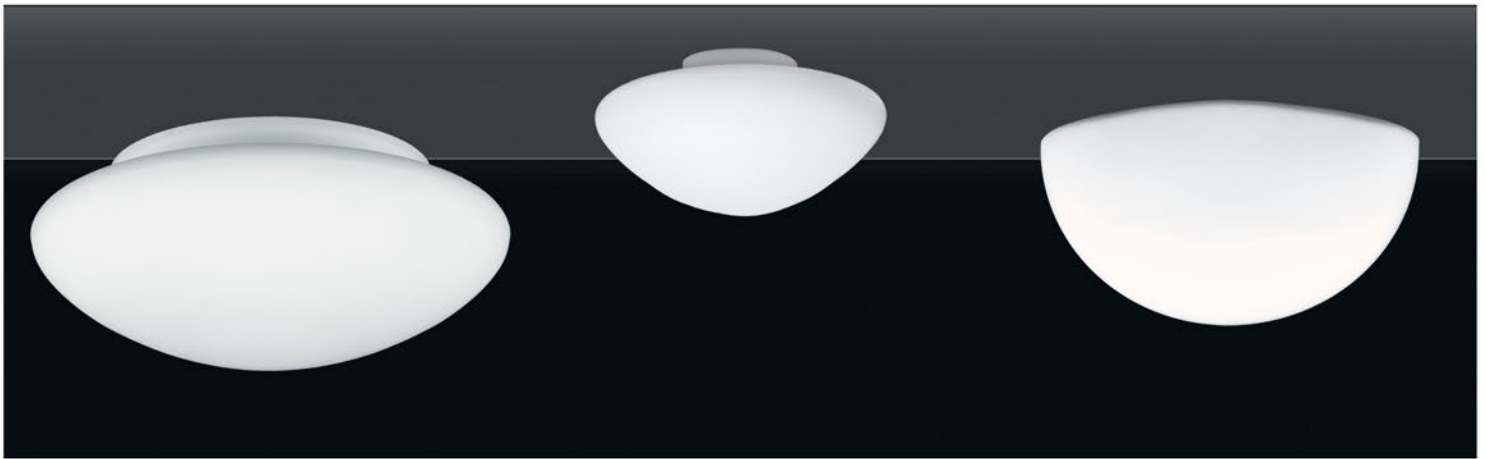


2041 Opal h:14 - Ø:32

2041-A Opal h:9 - Ø:23

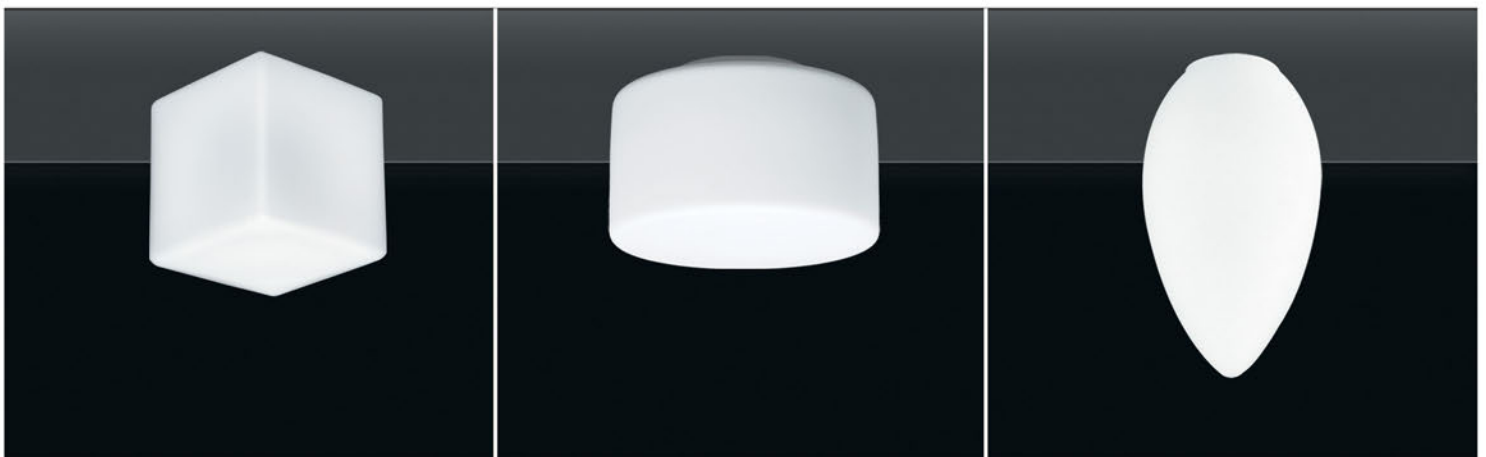
201 Opal h:10 - Ø:28

201-A Opal h:9 - Ø:24

202 Opal h:10 - Ø:28
202-A Opal h:9 - Ø:24

202-C Opal h:7 - Ø:11(E14)

202-2 Opal h:9 - Ø:24-12



4444-C Opal Kúp h:8 - Ø:8(E14)

033-C Opal h:7 - Ø:10(E14)

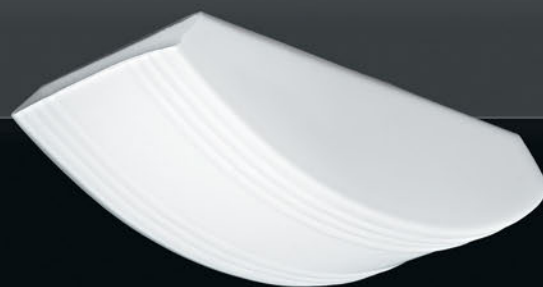
300 Opal h:15 - Ø:10(E14)



1950 Opal h:55 - Ø:6
 1950-A Opal h:40 - Ø:6
 1950-B Opal h:30 - Ø:6



1951 Opal h:55 - Ø:9(E14)
 1951-A Opal h:40 - Ø:9(E14)
 1951-B Opal h:30 - Ø:9(E14)



1960 Opal h:55 - Ø:11(E14)
 1960-A Opal h:40 - Ø:11(E14)
 1960-B Opal h:30 - Ø:11(E14)



1954 Opal h:9 - Ø:35
 1954-A Opal h:8 - Ø:30



1954-B Opal h:8 - Ø:25



1955 Opal h:6 - Ø:24
 1955-A Opal h:6 - Ø:21
 1955-B Opal h:6 - Ø:15



1958 Opal h:10 - Ø:35
 1958-A Opal h:9 - Ø:30
 1958-B Opal h:8 - Ø:25



El Dekorasyonlu Üfleme Camlar

Blown Glass With Hand Decoration

camın
efe'ndisi
glass



www.efecam.com.tr
www.efeglass.com



1973-5 Su Yolu h:20 - Ø:30
1973-A-5 Su Yolu h:17 Ø:25



1973-5-31 h:20 - Ø:30
1973-A-5-31 h:17 - Ø:25



1973-5-26 h:20 - Ø:30
1973-A-5-26 h:17 - Ø:25



1973-5-33 h:20 - Ø:30
1973-A-5-33 h:17 - Ø:25



1910-A-5 Su Yolu h:30 - Ø:30
1910-B-5 Su Yolu h:25 - Ø:25
1910-C-5 Su Yolu h:20 - Ø:20
1910-D-5 Su Yolu h:15 - Ø:18
1910-E-5 Su Yolu h:12 - Ø:14(E27)



1910-A-5-26 h:30 - Ø:30
1910-B-5-26 h:25 - Ø:25
1910-C-5-26 h:20 - Ø:20
1910-D-5-26 h:15 - Ø:18
1910-E-5-26 h:12 - Ø:14(E27)



1910-A-5-29 h:30 - Ø:30
1910-B-5-29 h:25 - Ø:25
1910-C-5-29 h:20 - Ø:20
1910-D-5-29 h:15 - Ø:18
1910-E-5-29 h:12 - Ø:14(E27)



1910-A-5-34 h:30 - Ø:30
1910-B-5-34 h:25 - Ø:25
1910-C-5-34 h:20 - Ø:20
1910-D-5-34 h:15 - Ø:18
1910-E-5-34 h:12 - Ø:14(E27)



116-5 Su Yolu h:30 - Ø:23
116-A-5 Su Yolu h:26 - Ø:19
116-C-5 Su Yolu h:12 - Ø:12(E27)



116-5-35 h:30 - Ø:23
116-A-5-35 h:26 - Ø:19
116-C-5-35 h:12 - Ø:12(E27)



116-5-40 h:30 - Ø:23
116-A-5-40 h:26 - Ø:19
116-C-5-40 h:12 - Ø:12(E27)



116-5-36 h:30 - Ø:23
116-A-5-36 h:26 - Ø:19
116-C-5-36 h:12 - Ø:12(E27)



1934-A-5-D h:22 - Ø:17
1934-B-5-D h:14 - Ø:12
1934-C-5-D h:11 - Ø:9(E14)
1934-D-5-D h:13 - Ø:12



1934-A-5-40 h:22 - Ø:17
1934-B-5-40 h:14 - Ø:12
1934-C-5-40 h:11 - Ø:9(E14)
1934-D-5-40 h:13 - Ø:12



1934-A-5-YN h:22 - Ø:17
1934-B-5-YN h:14 - Ø:12
1934-C-5-YN h:11 - Ø:9(E14)
1934-D-5-YN h:13 - Ø:12



1934-A-5-08 h:22 - Ø:17
1934-B-5-08 h:14 - Ø:12
1934-C-5-08 h:11 - Ø:9(E14)
1934-D-5-08 h:13 - Ø:12



2032-A-5-39 h:21 - Ø:18

2032-A-5-38 h:21 - Ø:18

2032-A-5-23 h:21 - Ø:18

2032-A-5-22 h:21 - Ø:18

1921-5 Su Yolu h:18 - Ø:17
1921-A-5 Su Yolu h:12 - Ø:13
1921-B-5 Su Yolu h:14 - Ø:111921-5-30 h:18 - Ø:17
1921-A-5-30 h:12 - Ø:13
1921-B-5-30 h:14 - Ø:111921-5-Alev h:18 - Ø:17
1921-A-5-Alev h:12 - Ø:13
1921-B-5-Alev h:14 - Ø:111921-5-32 h:18 - Ø:17
1921-A-5-32 h:12 - Ø:13
1921-B-5-32 h:14 - Ø:11333-A-5 Su Yolu h:29 - Ø:19
333-B-5-Su Yolu h:29 - Ø:14
333-C-5-Su Yolu h:29 - Ø:10
333-E-5-Su Yolu h:15 - Ø:10(E27)333-A-5-32 h:29 - Ø:19
333-B-5-32 h:29 - Ø:14
333-C-5-32 h:29 - Ø:10
333-E-5-32 h:15 - Ø:10(E27)

120-5-Su Yolu h:25 - Ø:13

120-5-43 h:25 - Ø:13



2034-A-5 h:22 - Ø:17

1909-A-5 Su Yolu h:20 - Ø:20

1909-B-5 Su Yolu h:13 - Ø:13(E27)
1909-C-5 Su Yolu h:10 - Ø:9(E14)



2045-A-5 h:18 - Ø:20

2045-B-5 h:11 - Ø:13

2046-A-5 h:20 - Ø:20

2046-B-5 h:12 - Ø:14



2013-5 h:21 - Ø:20

2013-B-5 h:11 - Ø:14(E27)

1111-5 h:30 - Ø:30
1111-A-5 h:20 - Ø:201111-B-5 h:13 - Ø:13(E27)
1111-C-5 h:10 - Ø:10(E14)

1117-A-5 h:20 - Ø:20

1117-B-5 h:15 - Ø:13

1933-A-5-26D h:15 - Ø:30
1933-B-5-26D h:12 - Ø:25
1933-C-5-26D h:12 - Ø:191933-A-5-45 h:15 - Ø:30
1933-B-5-45 h:12 - Ø:25
1933-C-5-45 h:12 - Ø:19

1906-B-5 h:32 - Ø:15

1906-C-5 h:16 - Ø:10(E27)

1942-5 Su Yolu h:25 - Ø:35
1942-A-5 Su Yolu h:22 - Ø:30

1942-B-5 Su Yolu h:20 - Ø:25



2044-A-5-44 h:20 - Ø:24

2044-B-5-44 h:15 - Ø:17

117-5-Su Yolu h:18 - Ø:32

117-B-5-Su Yolu h:14 - Ø:14(E27)

117-A-5-Su Yolu h:17 - Ø:25



110-5 Su Yolu h:25 - Ø:23

110-A-5 Su Yolu h:13 - Ø:14(E27)

1121-5-D h:29 - Ø:13

1121-5 h:29 - Ø:13



1972-5 h:25 - Ø:20

1972-A-5-AS h:14 - Ø:14(E27)

2007-5 Su Yolu h:30 - Ø:10-15

2007-A-5 Su Yolu h:16 - Ø:15(E27)



2024-A-5-42 h:18 - Ø:22

2024-B-5-42 h:10 - Ø:15

1914-5-32 h:19 - Ø:24

1914-C-5 Su Yolu h:12 - Ø:13(E27)



1908-5 Su Yolu h:29 - Ø:20-14



2043-A-5 h:23 - Ø:15.5



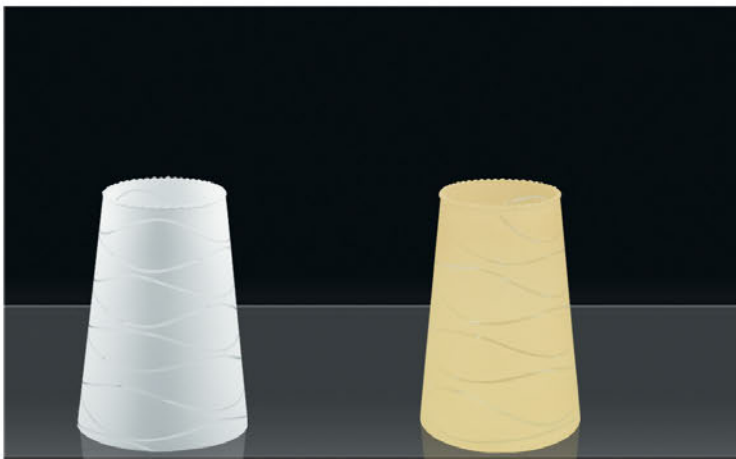
2016-A-5 h:21 - Ø:12



2080-D-5 Su Yolu h:14 - Ø:13(E27)



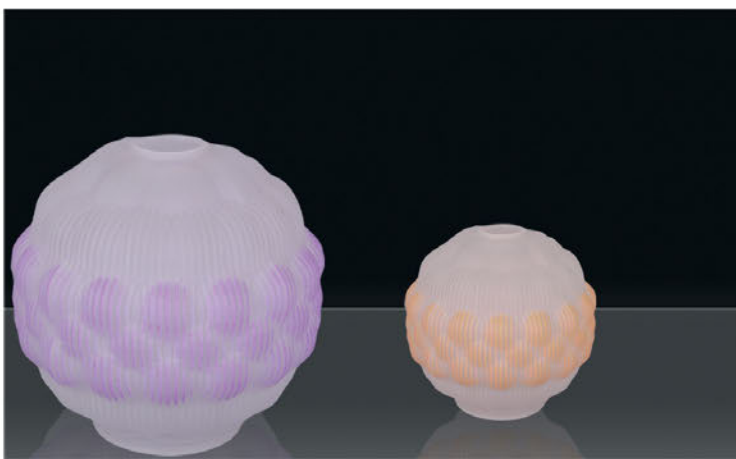
024-5 Su Yolu h:18 - Ø:8



023-5 Su Yolu h:18 - Ø:11



334-B-5 Su Yolu h:16 - Ø:14(E27)



2035-A-FS h:20 - Ø:21

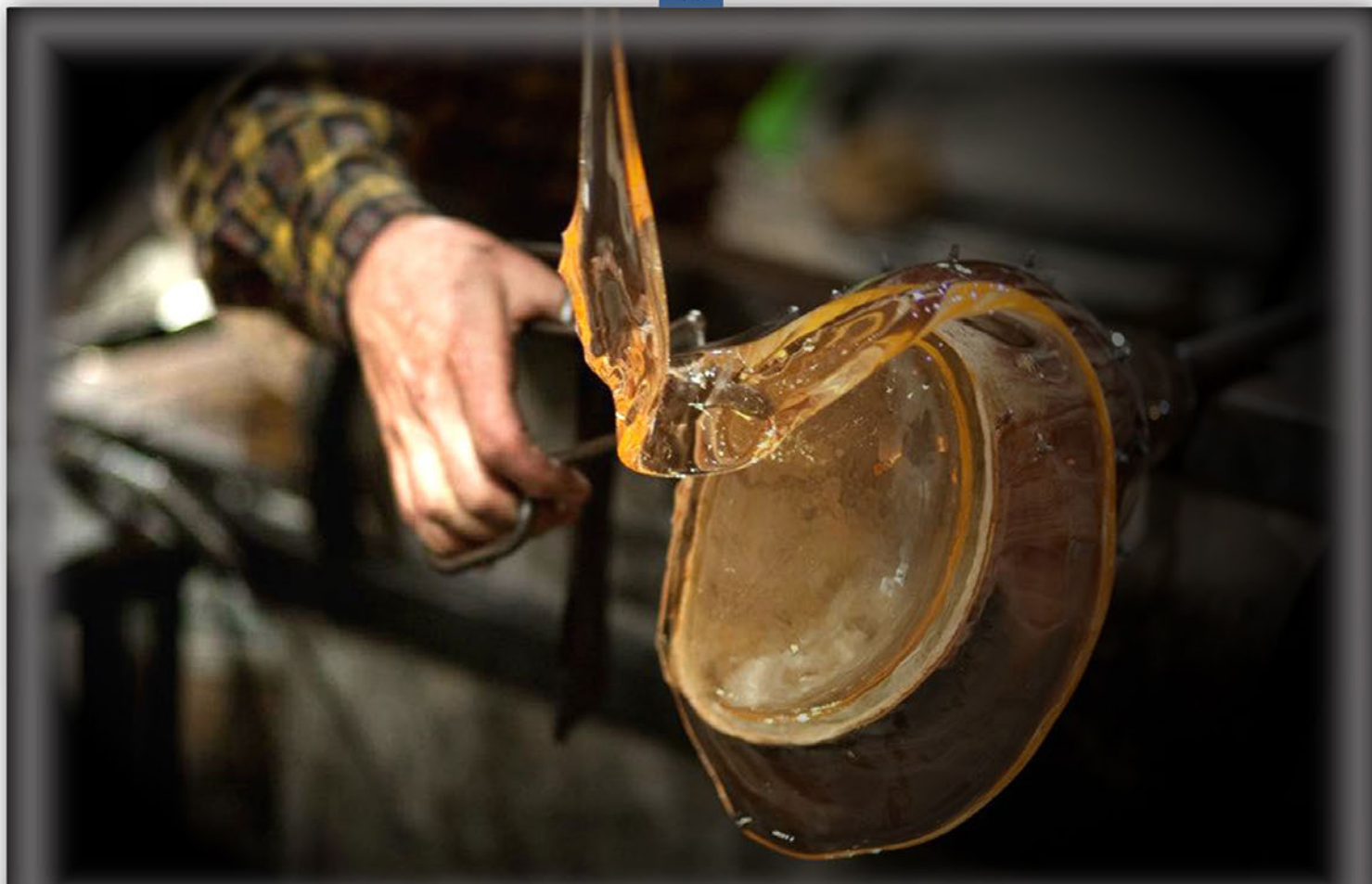
2035-B-FS h:13 - Ø:15(E27)



2035-A-1-6 h:20 - Ø:21

2035-B-1-6 h:13 - Ø:15(E27)

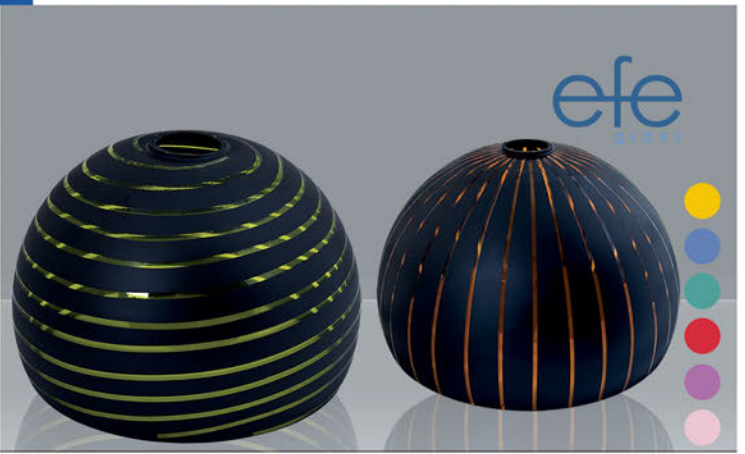






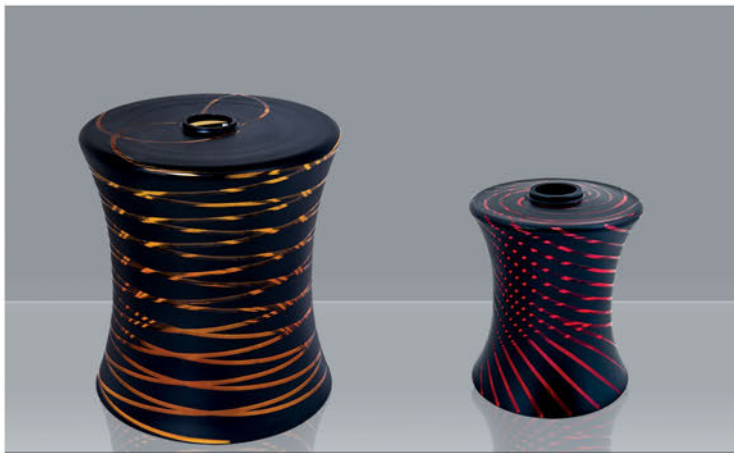
1111-5-1 h:30 - Ø:30
1111-A-5-1 h:20 - Ø:20
1111-B-5-1 h:13 - Ø:13(E27)

1111-5-50 h:30 - Ø:30
1111-A-5-50 h:20 - Ø:20
1111-B-5-50 h:13 - Ø:13(E27)



1916-5-53 h:26 - Ø:35
1916-A-5-53 h:22 - Ø:30

1916-5-50 h:26 - Ø:35
1916-A-5-50 h:22 - Ø:30



1934-5-52 h:30 - Ø:27
1934-A-5-52 h:22 - Ø:17

1934-B-5-52 h:14 - Ø:12(E27)

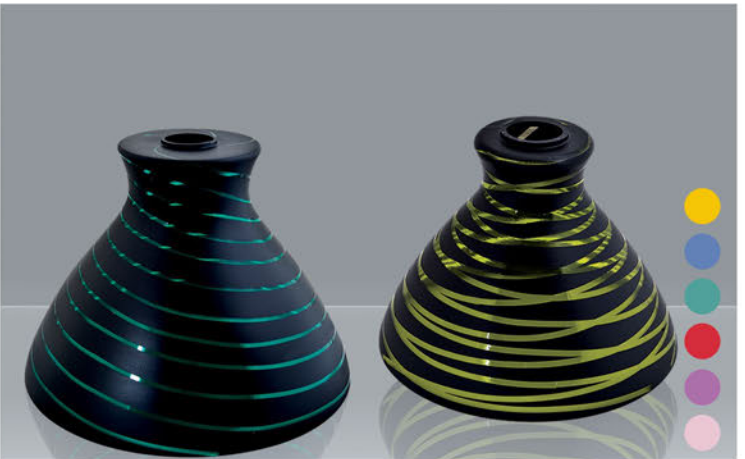


1934-5-53 h:30 - Ø:27
1934-A-5-53 h:22 - Ø:17

1934-B-5-53 h:14 - Ø:12(E27)

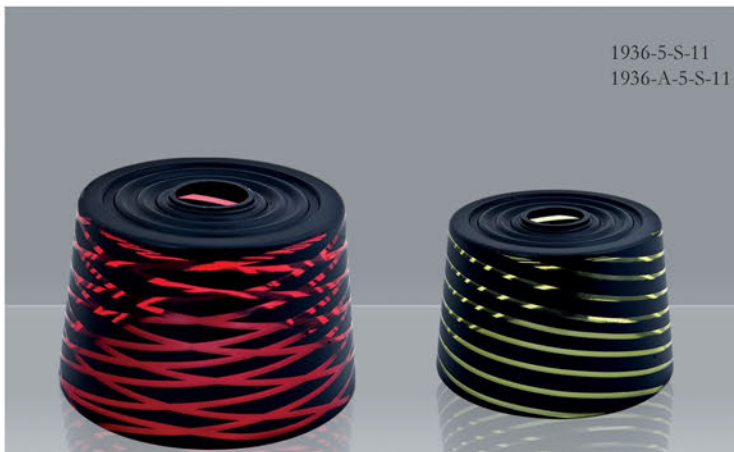


1936-5-50 h:23 - Ø:31
1936-A-5-50 h:18 - Ø:24



1942-5-53 h:25 - Ø:35
1942-A-5-53 h:22 - Ø:30
1942-B-5-53 h:20 - Ø:25

1942-5-52 h:25 - Ø:35
1942-A-5-52 h:22 - Ø:30
1942-B-5-52 h:20 - Ø:25



1933-A-5-52 h:15 - Ø:30
1933-B-5-52 h:12 - Ø:25

1933-A-5-53 h:15 - Ø:30
1933-B-5-53 h:12 - Ø:25



121-TS h:28 - Ø:14

121-A-TS h:16 - Ø:10(E27)

1936-5-S-11 h:23 - Ø:31
1936-A-5-S-11 h:18 - Ø:24



121-O-S h:28- Ø:14

121-A-O-S h:16- Ø:10(E27)



2012-A-61-S h:21- Ø:17

2012-B-61-S h:13- Ø:12(E27)



1973-61-26 h:20 - Ø:30
1973-A-61-26 h:17 - Ø:25

1973-61-31 h:20 - Ø:30
1973-A-61-31 h:17 - Ø:25



2013-5-61 h:21- Ø:20

2013-B-5-61 h:11- Ø:14(E27)



2024-A-61 h:18 - Ø:22

2024-B-61 h:10 - Ø:15



1921-61 h:18 - Ø:17
1921-A-61 h:12 - Ø:13



120-61-26 h:25 - Ø:13



1914-61-26 h:19 - Ø:24



1914-61-Alev h:19 - Ø:24



1914-61 h:19 - Ø:24



1972-5-61 h:25 - Ø:20
1972-A-5-61 h:14 - Ø:14(E27)



333-A-T-3 h:29 - Ø:19
333-B-T-3 h:29 - Ø:14



333-A-T-2 h:29 - Ø:19
333-B-T-2 h:29 - Ø:14



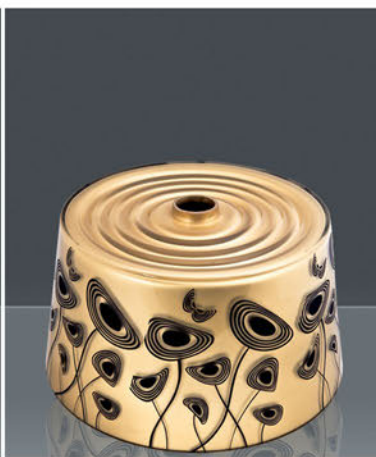
333-A-T-1 h:29 - Ø:19
333-B-T-1 h:29 - Ø:14



116-A-T-1 h:26 - Ø:19



1933-T-1 h:18 - Ø:35
1933-A-T-1 h:15 - Ø:30



1933-TV-1 h:18 - Ø:35
1933-A-TV-1 h:15 - Ø:30



1933-T-2 h:18 - Ø:35
1933-A-T-2 h:15 - Ø:30



1942-A-T-3 h:22 - Ø:30
1942-B-T-3 h:20 - Ø:25



333-A-PS h:29 - Ø:19
333-B-PS h:29 - Ø:14



1910-C-PS h:20 - Ø:20
1910-E-PS h:12 - Ø:14(E27)



1914-PS h:19 Ø:24



116-A-PS h:26 Ø:19



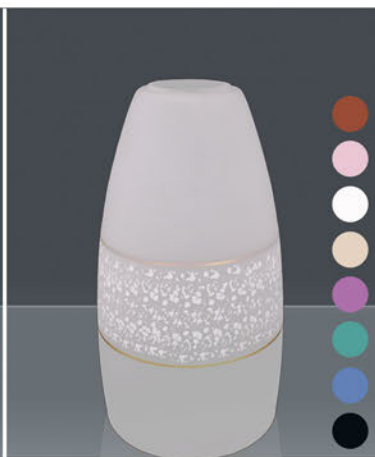
1914-OYP h:19 Ø:24



446-A-YP h:22 Ø:19



2043-A-OYP h:23 Ø:15.5



120-OYP h:25 Ø:13

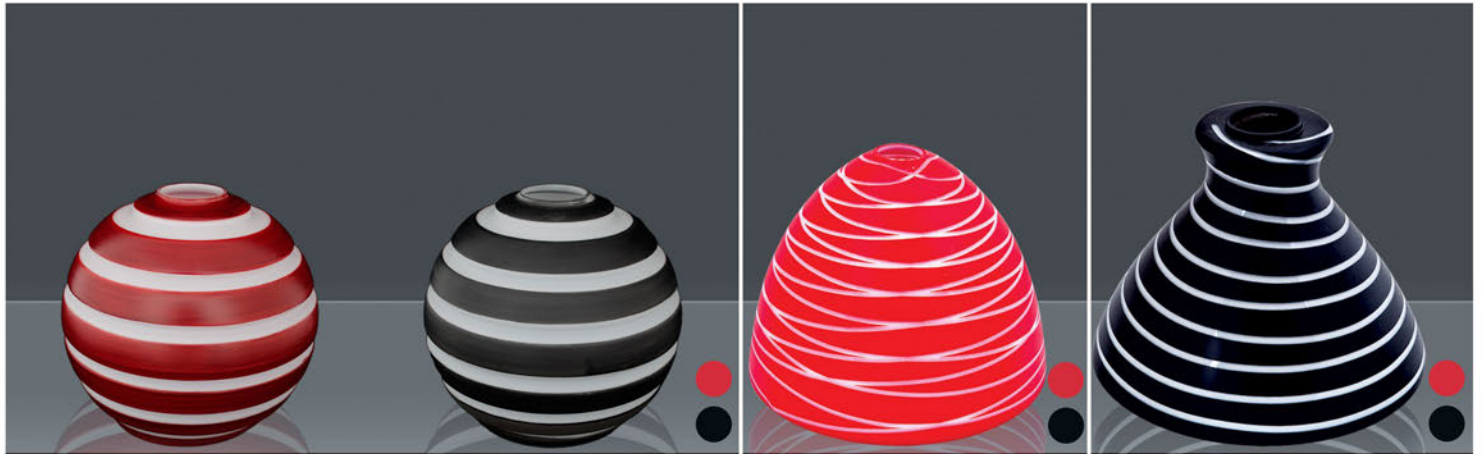




1933-01-02 h:18 - Ø:35
1933-A-01-02 h:15 - Ø:30

1942-A-0-1 h:22 - Ø:30
1942-B-0-1 h:20 - Ø:25

1936-01 h:23 - Ø:31
1936-A-01 h:18 - Ø:24



2046-A-O-FS h:20 - Ø:20

2046-A-O-FS h:20 - Ø:20

1936-5-52 h:23 - Ø:31
1936-A-5-52 h:18 - Ø:24

1942-5-51 h:25 - Ø:35
1942-A-5-51 h:22 - Ø:30

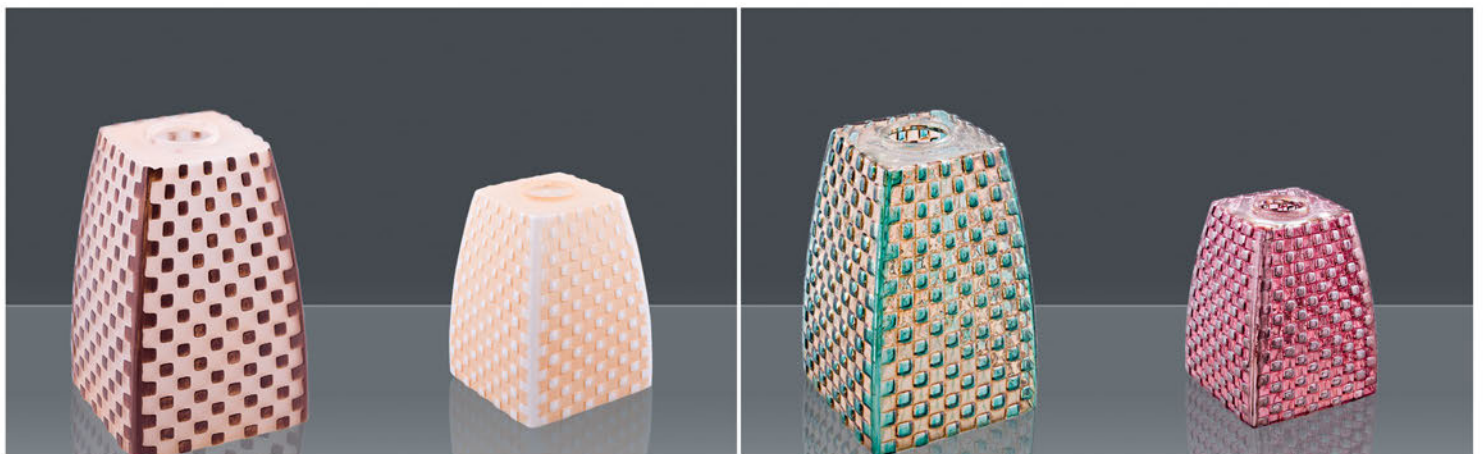


333-A-5-41 h:29 - Ø:19
333-B-5-41 h:29 - Ø:14

1921-5-41 h:18 - Ø:17
1921-A-5-41 h:12 - Ø:13

2038-A-1-FS h:27 - Ø:14

2040-A-5 h:22 - Ø:20

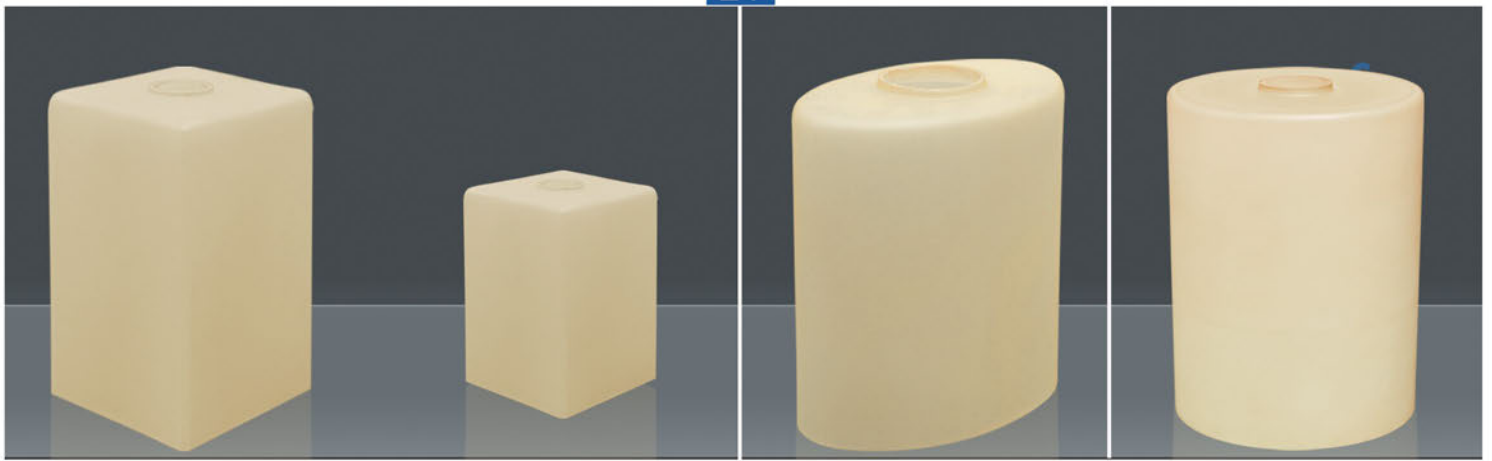


2029-MS h:22 Ø:15(E27)

2029-B-MS h:9 Ø:12(E27)

2029-TS h:22 Ø:15(E27)

2029-B-TS h:9 Ø:12(E27)

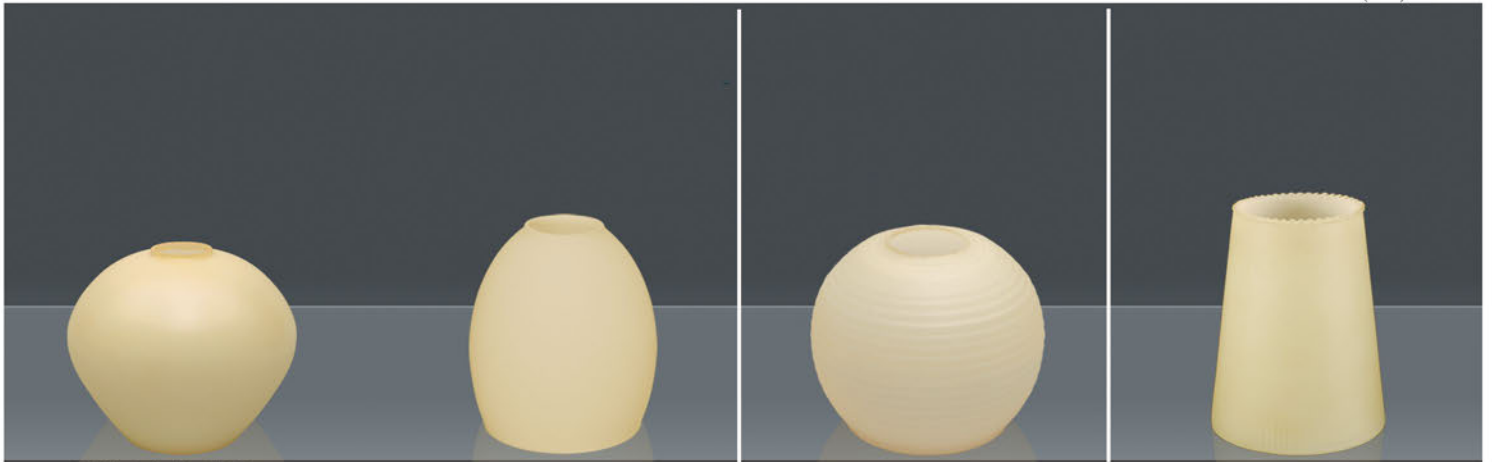


444-1 h:23 - Ø:15
444-A-1 h:20 - Ø:11
444-B-1 h:18 - Ø:9(E27)

444-C-1 h:10 - Ø:9(E14)

2007-1 h:30 - Ø:10-15
2007-A-1 h:16 - Ø:10-15(E27)

333-A-1 h:29 - Ø:19
333-B-1 h:29 - Ø:14
333-C-1 h:29 - Ø:10
333-E-1 h:15 - Ø:10(E27)

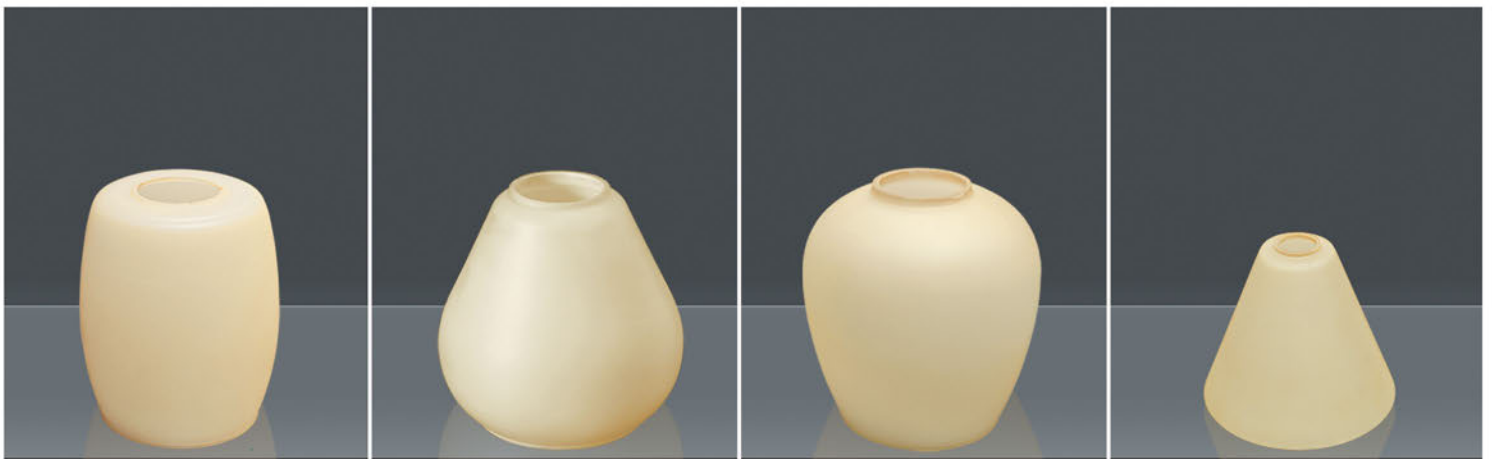


123-A-1 h:19 - Ø:20
123-B-1 h:12 - Ø:13(E14)

116-B-1 h:10 - Ø:8(E14)
116-C-1 h:13 - Ø:12(E27)
1116-C-1 h:10 - Ø:9(E14)

2009-1 h:18 - Ø:19
2009-A-1 h:12 - Ø:12(E27)
2009-B-1 h:10 - Ø:10(E14)

023-1 h:17 - Ø:11



1921-1 h:18 - Ø:17
1921-A-1 h:12 - Ø:13
1921-B-1 h:13 - Ø:11(E27)

117-1 h:18 - Ø:32
117-A-1 h:17 - Ø:25
117-B-1 h:14 - Ø:14(E27)

110-1 h:25 - Ø:23
110-A-1 h:13 - Ø:14(E27)
110-C-1 h:12 - Ø:10(E27)

113-C-1 h:10 - Ø:11(E14)



2029-1 h:22 - Ø:11(E27)

2029-B-1 h:9 - Ø:12(E27)

2012-A-1 h:21 - Ø:17
2012-B-1 h:13 - Ø:12(E27)

2030-A-1 h:22 - Ø:16-11



1934-A-10-3 h:22 - Ø:17

1934-B-10-3 h:14 - Ø:12



2032-A-10-3 h:21 - Ø:18



1921-10 h:18 - Ø:17



1911-C-10 h:20 - Ø:20

1911-D-10 h:15 - Ø:15



2024-A-10-2 h:18 - Ø:22

2024-B-10-2 h:10 - Ø:15



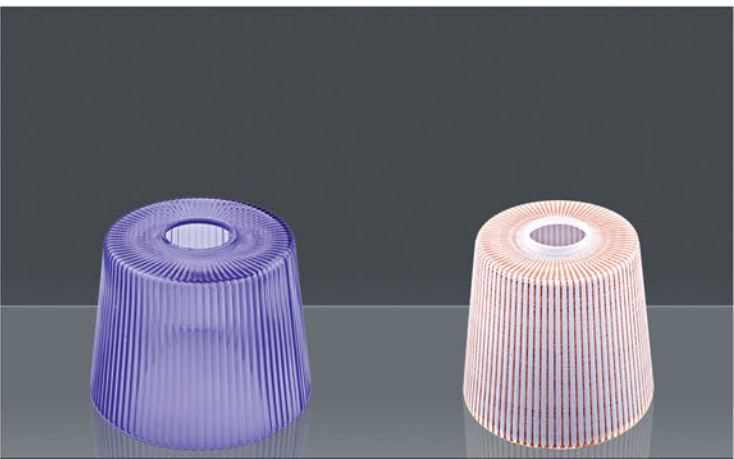
2024-A-10-1 h:18 - Ø:22

2024-B-10-1 h:10 - Ø:15



2030-A-TS h:22 - Ø:16-11

2030-A-MS h:22 - Ø:16-11



2031-B-TS h:13 - Ø:16

2031-C-FS h:13 - Ø:11



048-5-Ç Mat h:20 - Ø:14



048-A-5-Ç Somon h:18 - Ø:12



048-B-5-Ç Mat h:13 - Ø:11



030-5-Ç Somon h:17 - Ø:12



050-5-Ç Mat h:14 - Ø:15



048-Big-5 h:24 - Ø:17



048-Big-5-Ç h:24 - Ø:17



027-D h:24 - Ø:11



027-B-D h:17 - Ø:9



047-Ç h:24 - Ø:9



046-Altın Motif h:18 - Ø:9



0220 h:12 - Ø:15



0220-6 h:12 - Ø:15



022 Şeffaf h:18 - Ø:10



022-36 h:18 - Ø:10



333-A-5 Mat Delikli h:29 - Ø:19
333-B-5 Mat Delikli h:29 - Ø:14

333-C-5 Mat Delikli h:29 - Ø:10

333-B-5 Mat h:29 - Ø:14

B-120x230-3
h:23 - Ø:12

B-120x200-3
h:20 - Ø:12



AS-100x200-45
h:20 - Ø:10

AS-100x150-45
h:15 - Ø:10

AS-80x90-30
h:8 - Ø:9(E14)

BS-120x200-45
h:20 - Ø:12

BS-100x150-45
h:15 - Ø:10

BS-80x90-30
h:8 - Ø:9(E14)



BS-120x200-3
h:20 - Ø:12

BS-80x190-3
h:19 - Ø:8

AS-100x200-3
h:20 - Ø:10

AS-80x170-3
h:17 - Ø:8

S50x110-Mat h:11 - Ø:5 S50x110-Şeffaf h:11 - Ø:5



2080-A-5 Mat Delikli
h:26 - Ø:15-10

2080-C-5 Mat Delikli
h:16 - Ø:10-6

BS-60x190-3
h:19 - Ø:6

444-C-Mat
h:10 - Ø:9(E14)

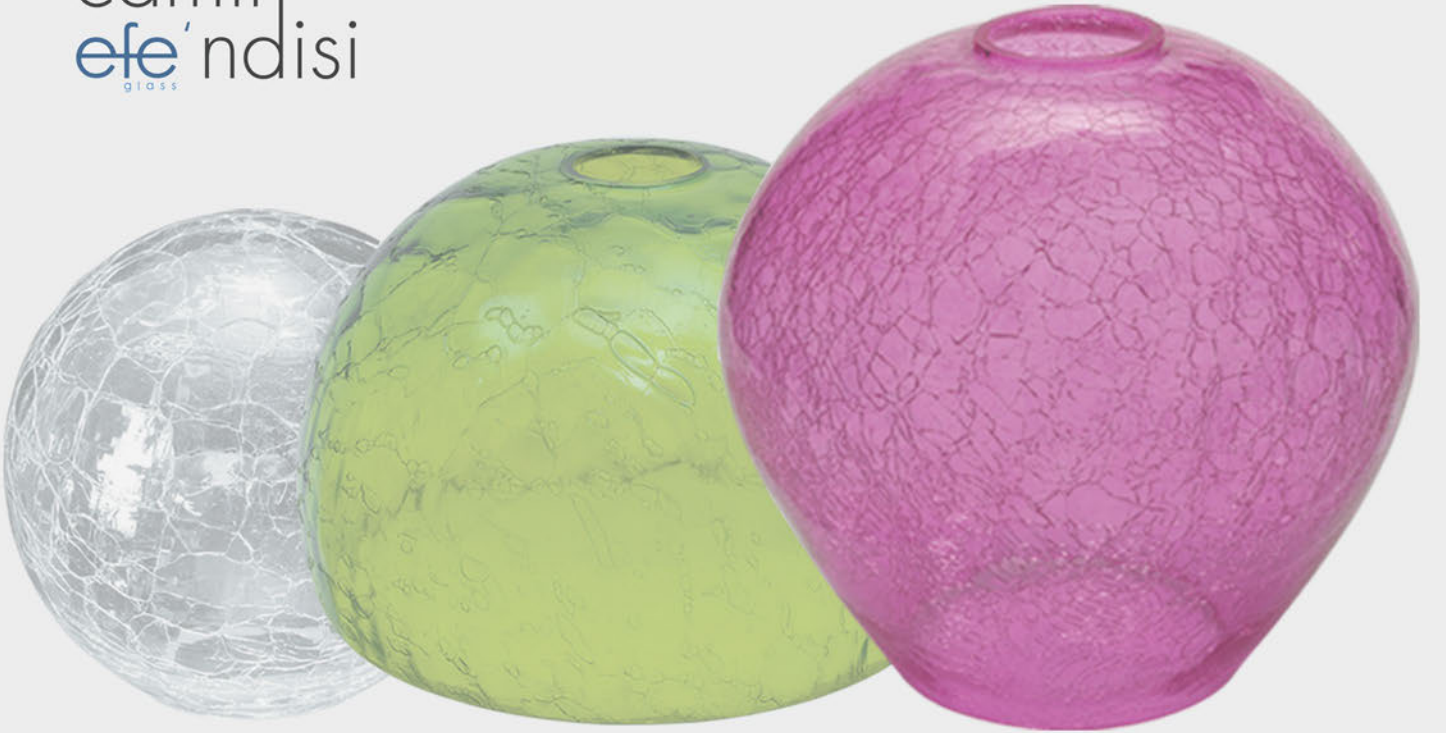
172-5-Mat
h:14 - Ø:11(E27)

e fe[®]
g l a s s

Transparan Boyalı Üfleme Camlar

Transparent Painted Blown Glass

camin
efe'ndisi
g l a s s



www.efecam.com.tr
www.efeglass.com



2013-6 h:21 - Ø:20

2013-B-6 h:11 - Ø:14(E27)



1973-6 h:20 - Ø:30
1973-B-6 h:10 - Ø:14

1973-A-6 h:17 - Ø:25



1906-B-6 h:32 - Ø:15

1906-C-6 h:16 - Ø:10(E27)



1908-6 h:29 - Ø:20(E14)



1111-6 h:30 - Ø:30
1111-A-6 h:20 - Ø:20

1111-B-6 h:13 - Ø:13(E27)
1111-C-6 h:10 - Ø:10(E14)



1120-6 h:30 - Ø:16

120-6 h:25 - Ø:13



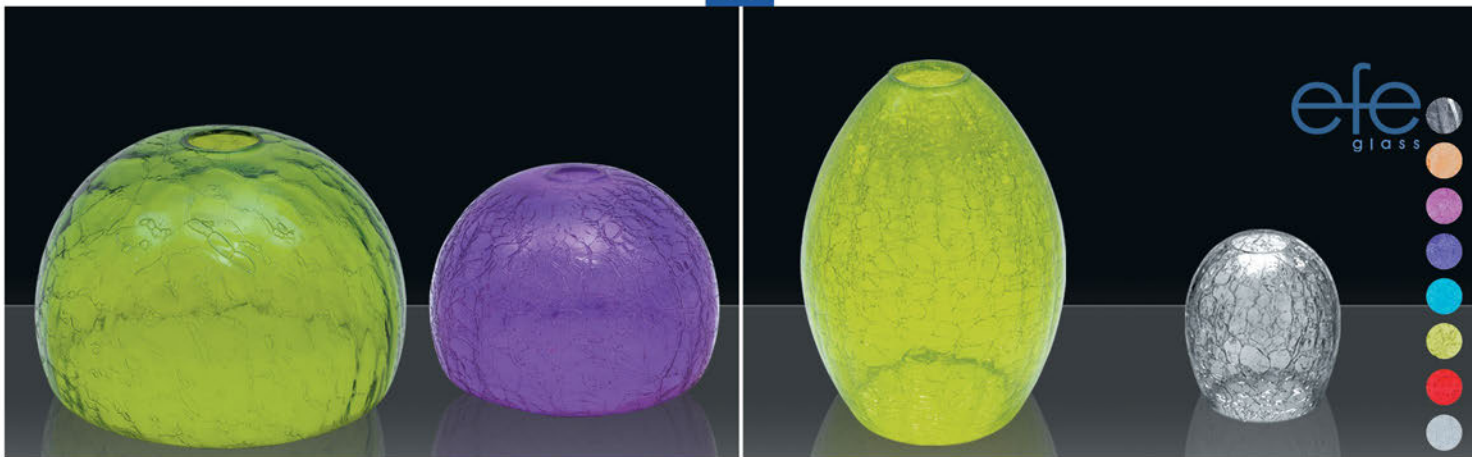
1934-6 h:30 - Ø:27
1934-A-6 h:20 - Ø:17
1934-D-6 h:13 - Ø:12
1934-C-6 h:11 - Ø:9(E14)

1934-B-6 h:14 - Ø:12(E27)



1117-A-6 h:23 - Ø:20

1117-B-6 h:15 - Ø:13(E27)

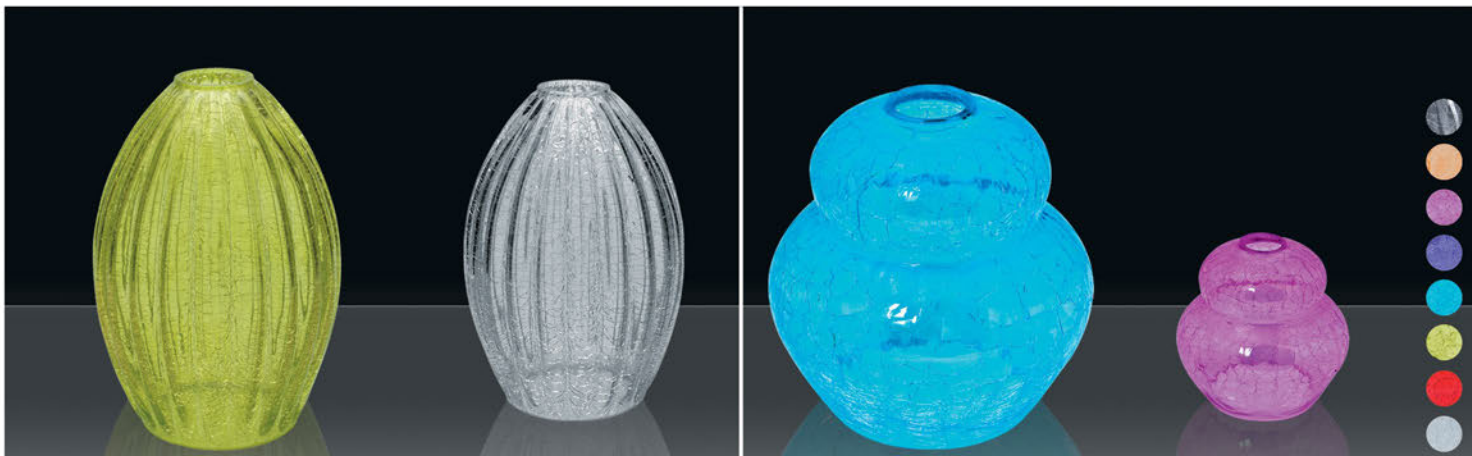


1916-6 h:26 - Ø:35
1916-A-6 h:22 - Ø:30

1916-B-6 h:18 - Ø:25

116-6 h:30 - Ø:23
116-A-6 h:26 - Ø:19
116-C-6 h:13 - Ø:12(E27)

1116-C-6 h:10 - Ø:9(E14)

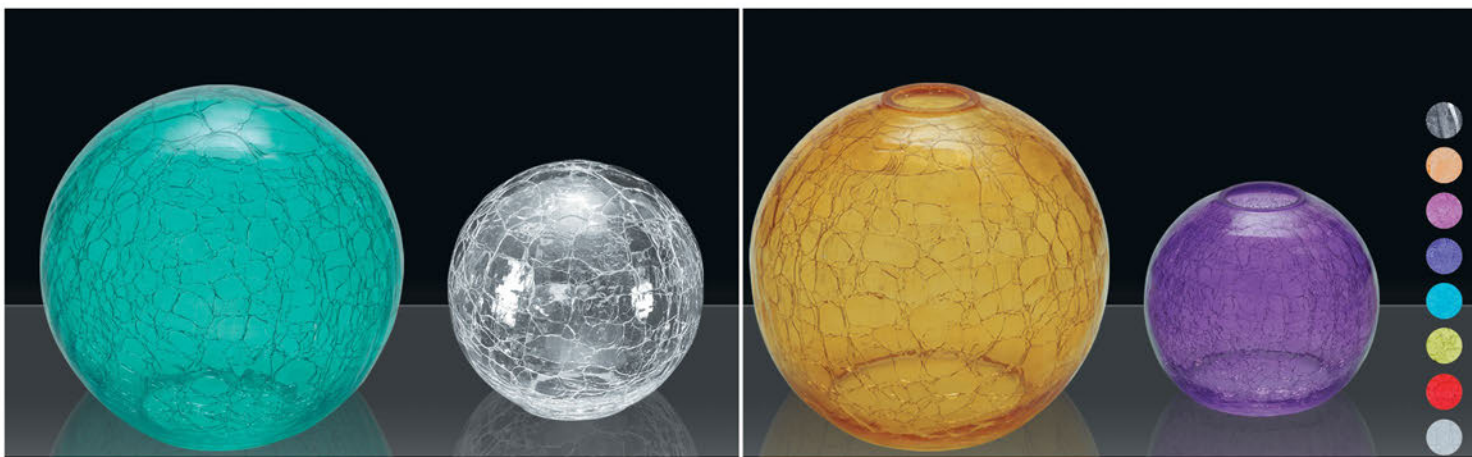


118-6 h:30 - Ø:23

118-A-6 h:26 - Ø:19

1909-6 h:30 - Ø:30
1909-A-6 h:20 - Ø:20
1909-B-6 h:13 - Ø:13

1909-C-6 h:10 - Ø:10(E14)



1911-6 Ø:35
1911-A-6 Ø:30
1911-B-6 Ø:25
1911-C-6 Ø:20

1911-D-6 Ø:15
1911-M-6 Ø:13

1910-A-6 Ø:30
1910-B-6 Ø:25
1910-C-6 Ø:20
1910-D-6 h:15 - Ø:18

1910-E-6 h:12 - Ø:14
1910-F-6 h:10 - Ø:11(E14)
1910-G-6 h:7 - Ø:8(E14)



110-6 h:25 - Ø:23

110-A-6 h:13 - Ø:14(E27)

1921-6 h:18 - Ø:17

1921-A-6 h:13 - Ø:13(E27)
1921-B-6 h:13 - Ø:11(E27)



333-A-6 h:29 - Ø:19
333-B-6 h:29 - Ø:14
333-C-6 h:29 - Ø:10

333-E-6 h:15 - Ø:10(E27)

2024-A-6 h:18 - Ø:22

2024-B-6 h:10 - Ø:15



123-A-6 h:19 - Ø:23

123-B-6 h:12 - Ø:13(E14)
123-B-6 h:12 - Ø:13(E27)

2007-6 h:30 - Ø:10-15

2007-A-6 h:16 - Ø:10-15



1915-A-6 h:16 - Ø:20(E27)

028-6 h:13 - Ø:20

028-A-6 h:19 - Ø:15

028-B-6 h:16 - Ø:10



334-B-6 h:16 - Ø:14

2080-C-6 h:15 - Ø:12(E27)

110-C-6 h:12 - Ø:10(E27)

1914-C-6 h:12 - Ø:13(E27)



24-1 Alaaddin h:19 - Ø:24
20-1 Alaaddin h:16 - Ø:20
17-1 Alaaddin h:14 - Ø:17
11-1 Alaaddin h:14 - Ø:11
09-1 Alaaddin h:11 - Ø:9



24-D Mat Alaaddin h:19 - Ø:24
20-D Mat Alaaddin h:16 - Ø:20
17-D Mat Alaaddin h:14 - Ø:17
11-D Mat Alaaddin h:14 - Ø:11
09-D Mat Alaaddin h:11 - Ø:9



24-Opal Alaaddin h:19 - Ø:24
20-Opal Alaaddin h:16 - Ø:20
17-Opal Alaaddin h:14 - Ø:17
11-Opal Alaaddin h:14 - Ø:11
09-Opal Alaaddin h:11 - Ø:9



026-D Mat h:25 - Ø:7



026-1 h:25 - Ø:7



025-D Mat h:28 - Ø:9



025-Opal h:28 - Ø:9



028 Şeffaf h:13 - Ø:20
028-A Şeffaf h:19 - Ø:15
028-B Şeffaf h:16 - Ø:11



028-B Yıldızlı h:16 - Ø:11



2050 h:18 - Ø:25



2051 h:19 - Ø:23



022-5-Ç Somon h:14 - Ø:32



022-A-5-Ç Mat h:10 - Ø:17



0222-Mat h:13 - Ø:30



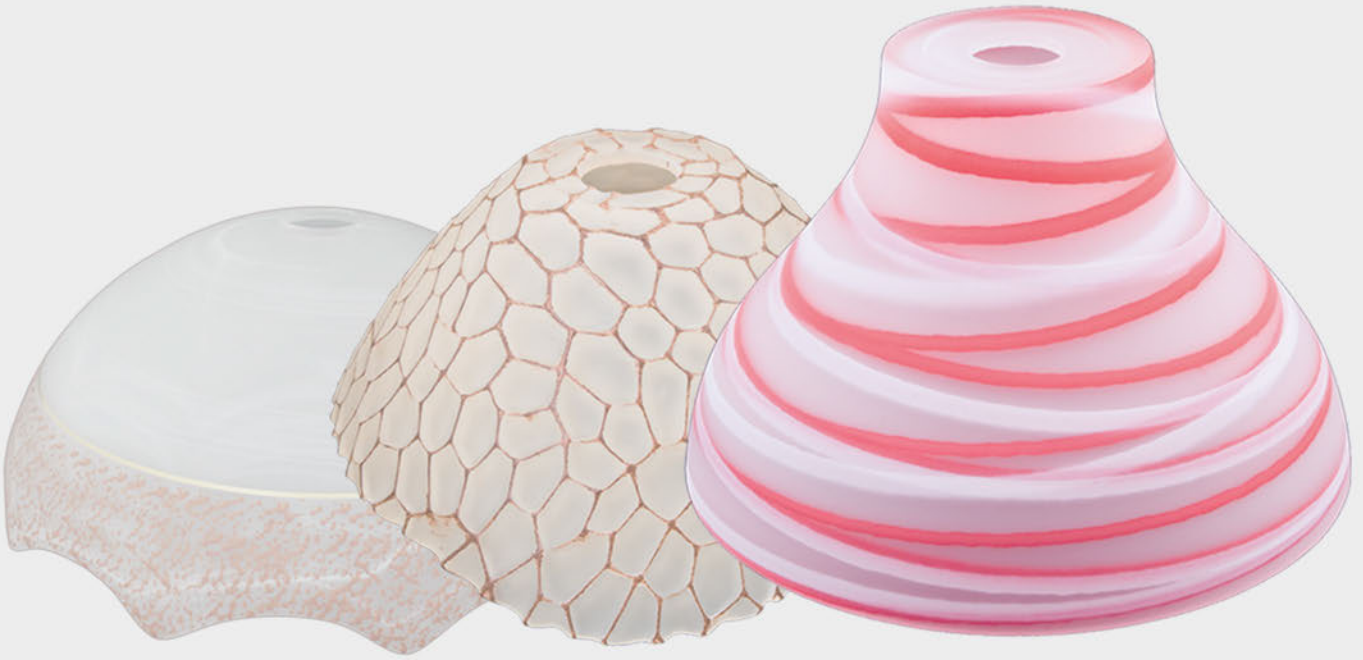
0222-A-Mar h:10 - Ø:17



Endüstriyel Otomasyon Camlar

Industrial Automation Glass

camın
efe'ndisi
glass





1921 Winx h:18 - Ø:17



1921 Looney Tunes h:18 - Ø:17



1921 Tweety h:18 - Ø:17



1921 Ben 10 h:18 - Ø:17



1006-A-30-83 h:13 - Ø:30



1006-A-30-80 h:13 - Ø:30



1006-A-30-81 h:13 - Ø:30



1147-A-30-73 h:15 - Ø:30



1147-A-30-74 h:15 - Ø:30



1147-A-30-85 h:15 - Ø:30



1147-CD-46 h:18 - Ø:34



1147-CD-55 h:18 - Ø:34



1147-CD-56 h:18 - Ø:34



139-ÇD-40 h:14 - Ø:36
139-A-ÇD-40 h:12 - Ø:27



139-ÇD-41 h:14 - Ø:36
139-A-ÇD-41 h:12 - Ø:27



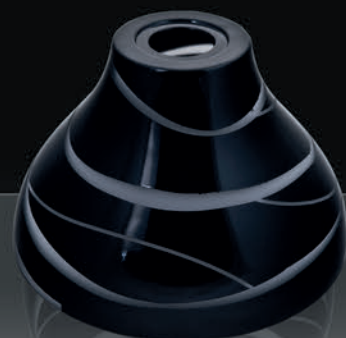
139-ÇD-42 h:14 - Ø:36
139-A-ÇD-42 h:12 - Ø:27



1039-T-3 h:20 - Ø:32
1039-A-T-3 h:16 - Ø:22



1039-01 h:20 - Ø:32
1039-A-01 h:16 - Ø:22



1039-5-D h:20 - Ø:32
1039-A-5-D h:16 - Ø:22



1039-5-41 h:20 - Ø:32



1039-A-5-41 h:16 - Ø:22



1039-B-5-41 h:12 - Ø:16



106-5-41 h:15 - Ø:36



1006-A-5-41 h:13 - Ø:30



106-C-5-41 h:11 - Ø:14

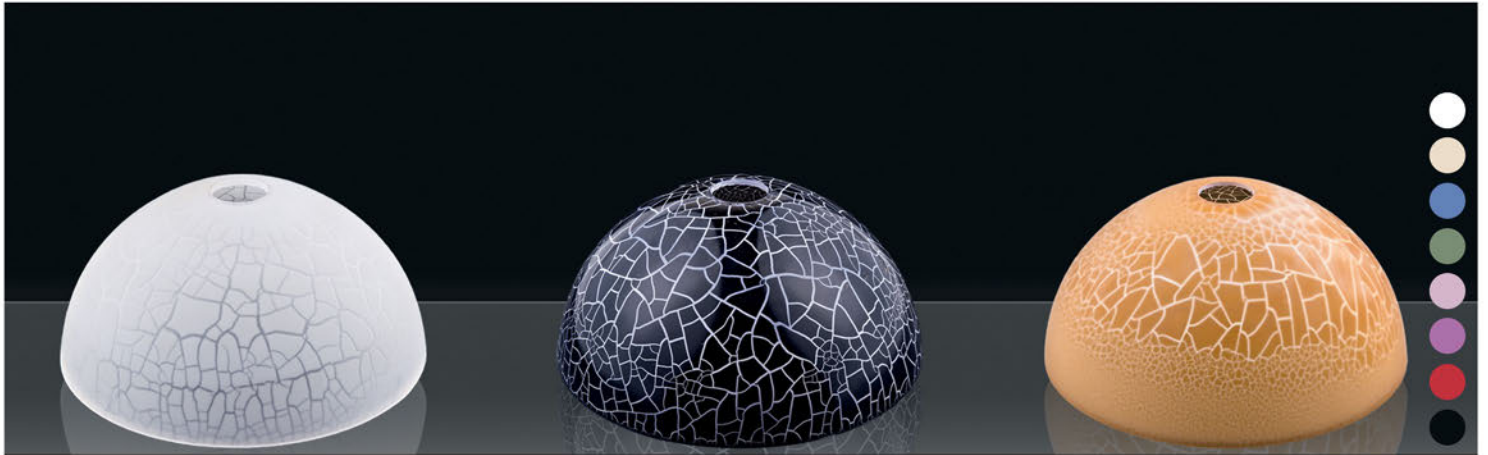
107-45-DK h:10 - Ø:45
 107-40-DK h:10 - Ø:40
 107-35-DK h:10 - Ø:35
 107-30-DK h:10 - Ø:30
 107-25-DK h:10 - Ø:25
 107-20-DK h: 8 - Ø:20
 107-16-DK h: 9 - Ø:16(E27)



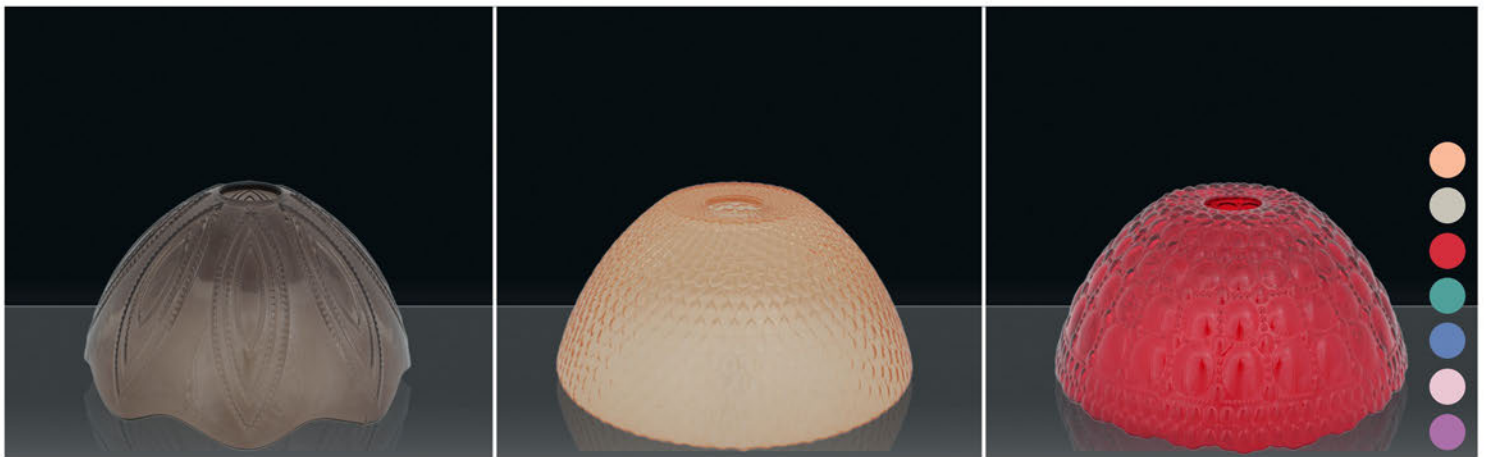
1006-Big-DK h:18 - Ø:45
 1006-DK h:16 - Ø:40
 1006-A-DK h:13 - Ø:30
 106-DK h:15 - Ø:36
 106-A-DK h:10 - Ø:22
 1006-B-DK h: 9 - Ø:16(E27)



127-50-DK h:13 - Ø:50
 127-40-DK h:11 - Ø:40
 127-30-DK h:9 - Ø:30



1006-A-10 h:13 - Ø:30



1187-A-1-6 h:13 - Ø:24

1182-A-1-6 h:12 - Ø:27

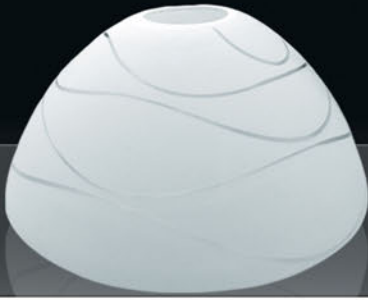
1178-A-1-6 h:12 - Ø:27.5



1147-PS h:18 - Ø:34
 1147-A-PS h:13 - Ø:26

106-PS h:15 - Ø:36
 1006-A-PS h:13 - Ø:30

1039-PS h:20 - Ø:32
 1039-A-PS h:16 - Ø:22



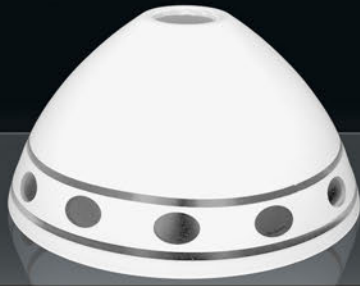
1047-5 Su Yolu h:18 - Ø:34
 1147-A-5-30 Su Yolu h:15 - Ø:30
 1147-A-5 Su Yolu h:13 - Ø:26
 1147-B-5 Su Yolu h:12 - Ø:17(E27)



1147-5-26 h:18 - Ø:34
 1147-A-5-30-26 h:15 - Ø:30
 1147-A-5-26 h:13 - Ø:26



1147-5-31 h:18 - Ø:34
 1147-A-5-30-31 h:15 - Ø:30
 1147-A-5-31 h:13 - Ø:26



1147-5-32 h:18 - Ø:34
 1147-A-5-30-32 h:15 - Ø:30
 1147-A-5-32 h:13 - Ø:26



1147-5-29 h:18 - Ø:34
 1147-A-5-30-29 h:15 - Ø:30
 1147-A-5-29 h:13 - Ø:26



1147-5-62 h:18 - Ø:34
 1147-A-5-30-62 h:15 - Ø:30
 1147-A-5-62 h:13 - Ø:26



1147-5-63 h:18 - Ø:34
 1147-A-5-30-63 h:15 - Ø:30
 1147-A-5-63 h:13 - Ø:26



1147-5-48 h:18 - Ø:34
 1147-A-5-30-48 h:15 - Ø:30
 1147-A-5-48 h:13 - Ø:26



1147-5-47 h:18 - Ø:34
 1147-A-5-30-47 h:15 - Ø:30
 1147-A-5-47 h:13 - Ø:26



1039-5-32 h:20 - Ø:32
 1039-A-5-32 h:16 - Ø:22
 1039-B-5-32 h:12 - Ø:16



1039-5 Su Yolu h:20 - Ø:32
 1039-A-5 Su Yolu h:16 - Ø:22
 1039-B-5 Su Yolu h:12 - Ø:16

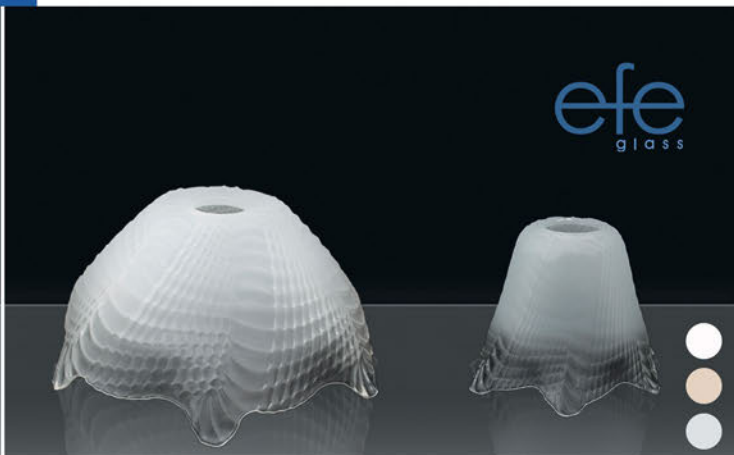


1039-5-53 h:20 - Ø:32
 1039-A-5-53 h:16 - Ø:22
 1039-B-5-53 h:12 - Ø:16



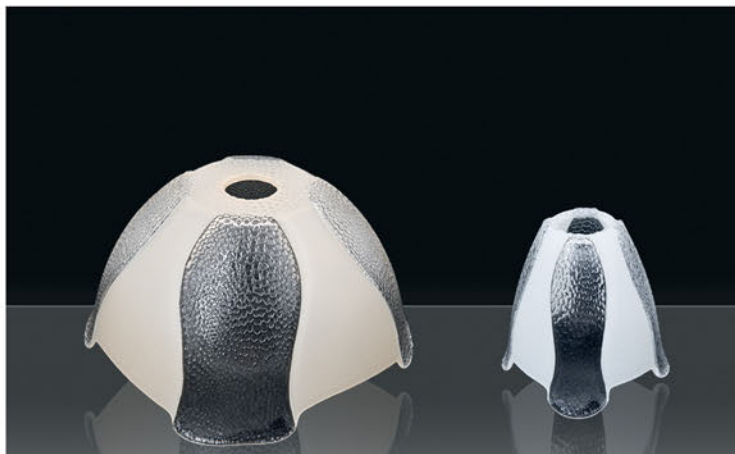
1191-A-5 h:14 - Ø:28

1191-B-5 h:12 - Ø:15(E27)



1177-A-5 h:12 - Ø:27

1177-B-5 h:11 - Ø:15(E27)



1151-A-5 h:14 - Ø:29
1151-B-5 h:12 - Ø:22

1151-C-5 h:12 - Ø:17(E27)
1151-D-5 h:11 - Ø:14(E27)
1151-E-5 h:11 - Ø:11(E14)



1213-A-5 h:15 - Ø:27(E27)

1213-B-5 h:12 - Ø:15(E27)



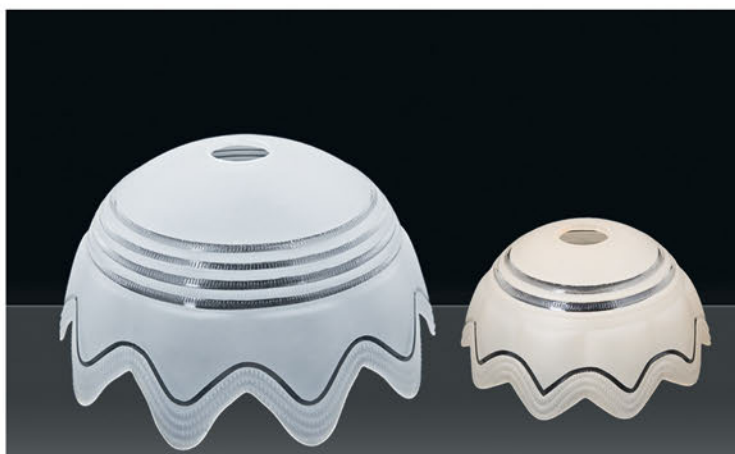
1170-5-A h:16 - Ø:36
1170-A-5-A h:13 - Ø:31

1170-B-5-A h:11 - Ø:14(E27)



1170-5-Ü h:16 - Ø:36
1170-A-5-Ü h:13 - Ø:31

1170-B-5-Ü h:11 - Ø:14(E27)



1154-A-5 h:18 - Ø:30

1154-B-5 h:11 - Ø:23



1153-A-5 h:16 - Ø:30
1153-B-5 h:11 - Ø:23

1153-C-5 h:12 - Ø:16(E27)
1153-D-5 h:12 - Ø:16(E27)



1148-5 h:14 - Ø:36
1148-A-5 h:13 - Ø:30

1148-B-5 h:12 - Ø:15(E27)



e
fe
glass

1157-A-5 h:18 - Ø:30
1157-B-5 h:12 - Ø:23

1157-C-5 h:11 - Ø:17(E27)



1155-A-5 h:13 - Ø:28

1155-B-5 h:12 - Ø:16(E27)



1163-5 Mat h:19 - Ø:38
1163-A-5 Mat h:16 - Ø:36
1163-B-5 Mat h:15 - Ø:26

1163-C-5 Mat h:12 - Ø:18(E27)
1163-D-5 Mat h:11 - Ø:15(E14)



1138-5-Ç h:16 - Ø:36
1138-A-5-Ç h:15 - Ø:28

1138-B-5-Ç h:11 - Ø:14(E27)
1138-C-5-Ç h:10 - Ø:13(E14)



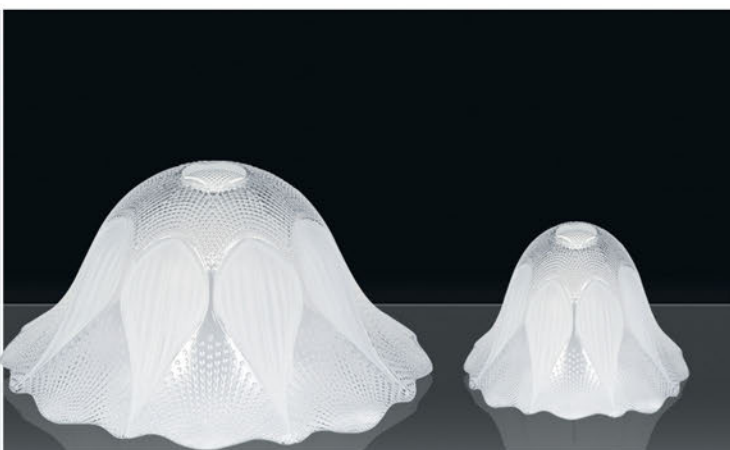
1138-5-Ç-55 h:16 - Ø:36
1138-A-5-Ç-55 h:15 - Ø:28

1138-B-5-Ç-55 h:11 - Ø:14(E27)
1138-C-5-Ç-55 h:10 - Ø:13(E14)



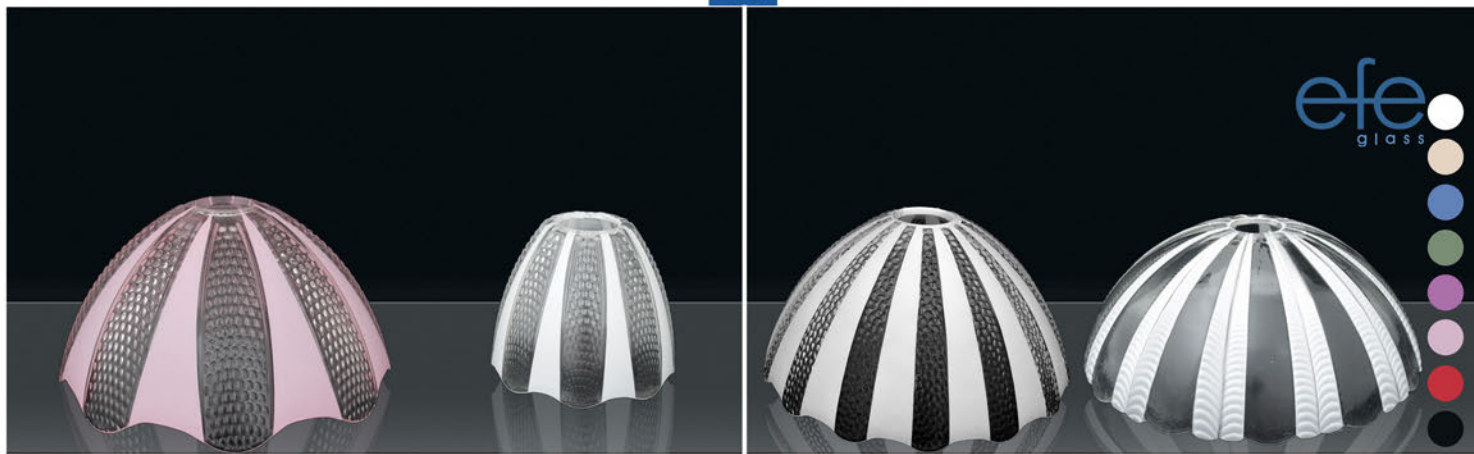
1138-5 h:16 - Ø:36
1138-A-5 h:15 - Ø:28

1138-B-5 h:11 - Ø:14(E27)
1138-C-5 h:10 - Ø:13(E14)



1139-5 h:16 - Ø:37
1139-A-5 h:14 - Ø:29

1139-B-5 h:11 - Ø:16(E27)

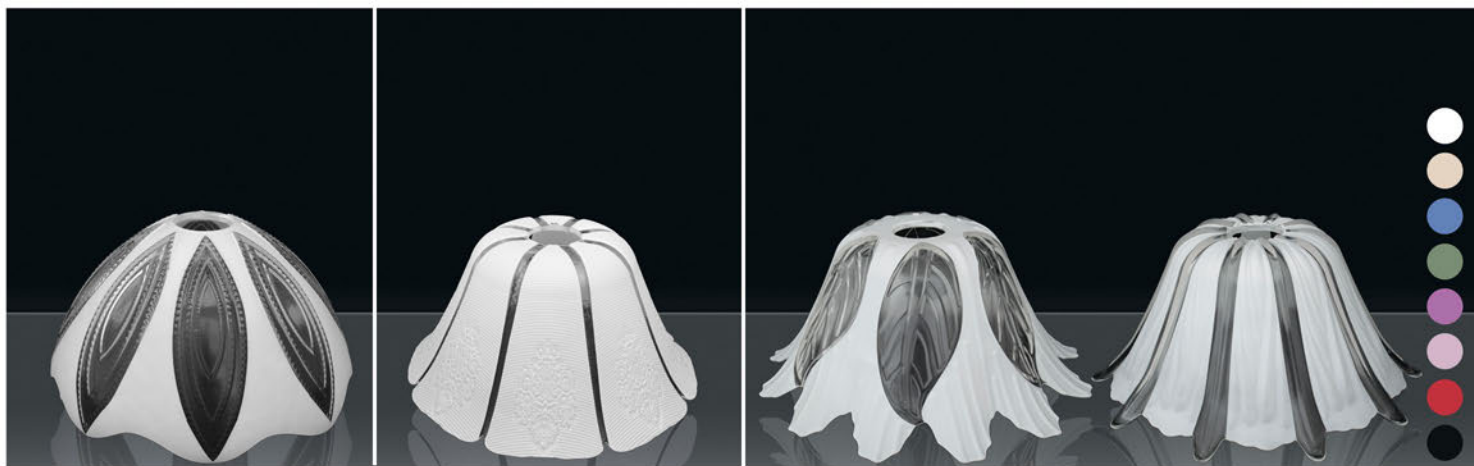


1188-A-5 h:14 - Ø:28

1188-B-5 h:11 - Ø:13(E27)

1186-A-5 h:13 - Ø:25

1179-A-5 h:11 - Ø:30



1187-A-5 h:13 - Ø:25

1183-A-5 h:12 - Ø:26

1185-A-5 h:13 - Ø:27

1190-A-5 h:13 - Ø:28



126-5 h:20 - Ø:32

126-A-5 h:16 - Ø:22

1164-5 h:18 - Ø:37

1164-A-5 h:15 - Ø:29

1164-B-5 h:12 - Ø:16(E27)

1164-C-5 h:11 - Ø:15(E27)

044-5 Su Yolu h:17 - Ø:58
044-A-5 Su Yolu h:11 - Ø:40044-5 Irmak h:17 - Ø:58
044-A-5 Irmak h:11 - Ø:40

1034-5 Su Yolu h:16 - Ø:37

107-45-5Ç h:10 - Ø:45
 107-40-5Ç h:10 - Ø:40
 107-35-5Ç h:10 - Ø:35
 107-30-5Ç h:10 - Ø:30
 107-25-5Ç h:10 - Ø:25



1006-B-5Ç h:9 - Ø:16(E27)

e
fe
glass



1145-5 Mat h:16 - Ø:36
 1145-A-5 Mat h:13 - Ø:30
 1145-B-5 Mat h:11 - Ø:26

1145-D-5 Mat h:9 - Ø:16
 1145-C-5 Mat h:12 - Ø:14



106-5 Su Yolu h:15 - Ø:36



1006-A-5 Su Yolu h:13 - Ø:30
 106-A-5 Su Yolu h:10 - Ø:22
 106-C-5 Su Yolu h:11 - Ø:14(E27)



1162-51 h:15 - Ø:36
 1162-A-51 h:15 - Ø:25
 1162-B-51 h:10 - Ø:16



1162-5 h:15 - Ø:36
 1162-A-5 h:15 - Ø:25
 1162-B-5 h:10 - Ø:16



1038-5 Su Yolu h:16 - Ø:45
 1038-A-5 Su Yolu h:14 - Ø:35



1038-C-5 Su Yolu h:12 - Ø:15(E27)



1036-5 Su Yolu h:21 - Ø:40



1036-5 Raket h:21 - Ø:40



1021-5 Alev h:22 - Ø:17
 1021-A-5 Alev h:17 - Ø:15



1021-5 Gül h:22 - Ø:17
 1021-A-5 Gül h:17 - Ø:15



1021-5 Su Yolu h:22 - Ø:17
 1021-A-5 Su Yolu h:17 - Ø:15





1201-A-MS h:15 - Ø:29



1202-A-MS h:15 - Ø:29

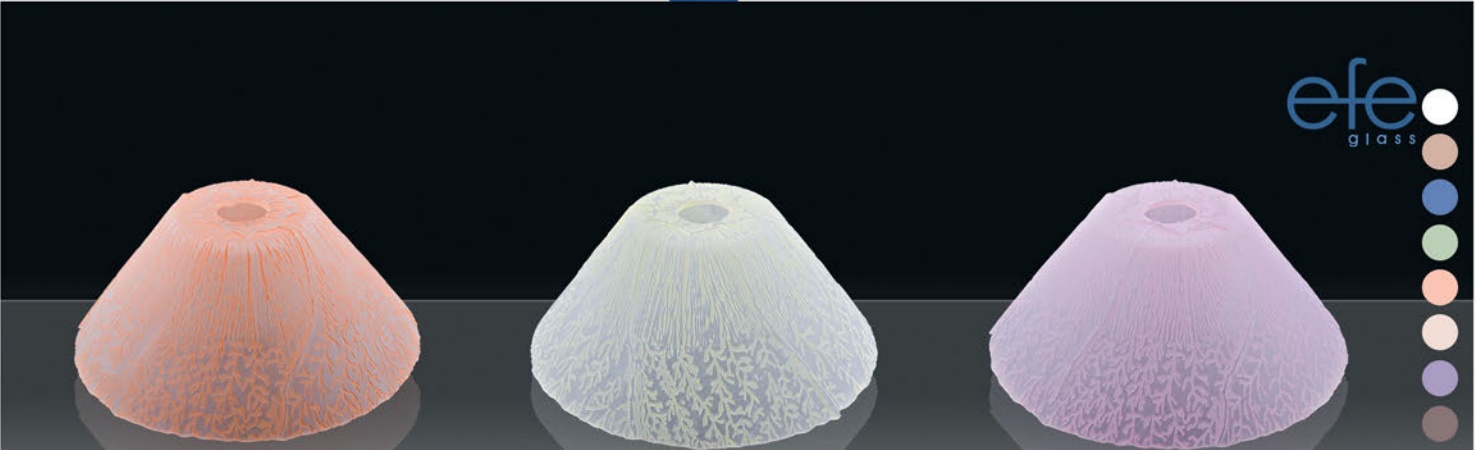


1210-A-1-FS h:14 - Ø:28

1210-A-MS h:14 - Ø:28



1203-A-1-MS h:15 - Ø:29



1205-A-1-MS h:13 - Ø:30

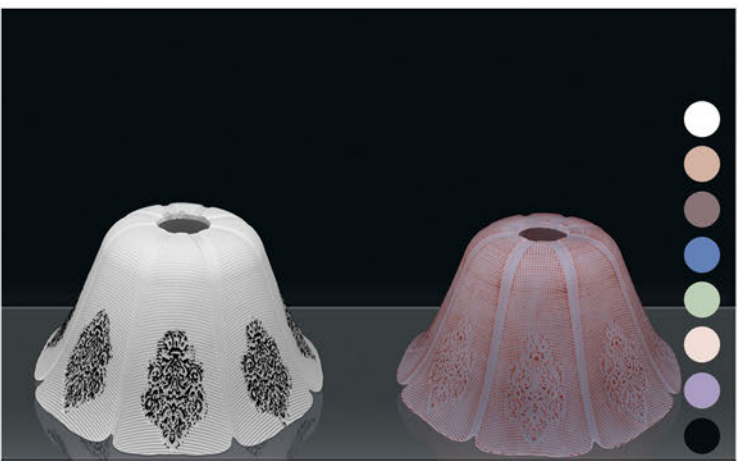


1169-A-1 h:11 - Ø:27



1185-A-FS h:13 - Ø:27

1185-A-31 h:13 - Ø:27



1183-A-1-FS h:12 - Ø:26

1183-A-FS h:12 - Ø:26



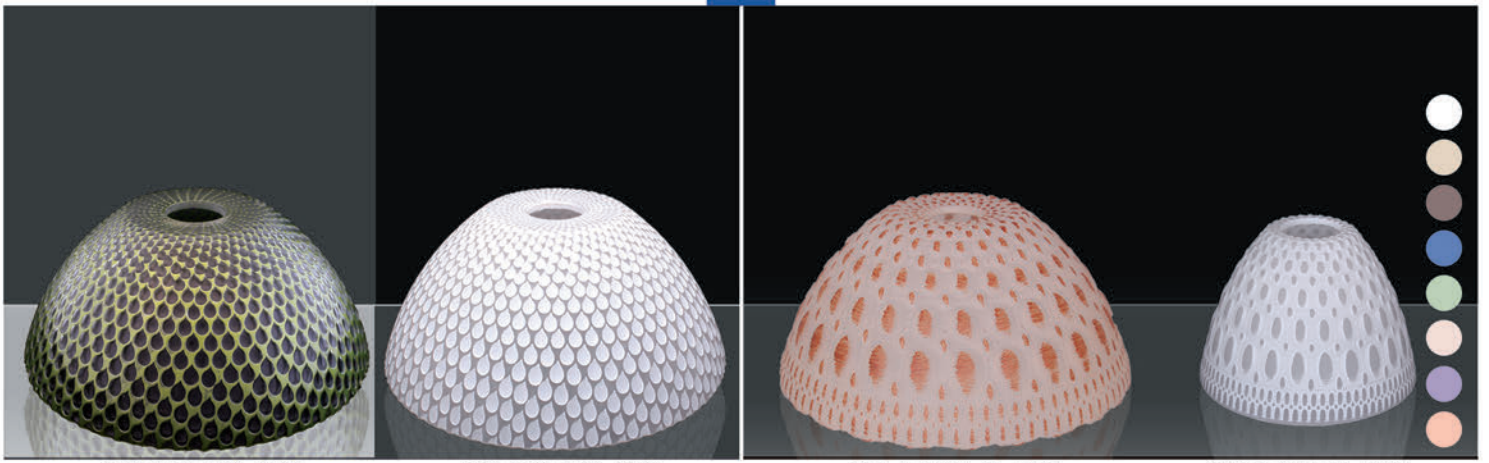
1167-A-FS h:20 - Ø:20

1167-C-FS h:13 - Ø:13



1168-A-1-Y h:12 - Ø:27

1168-C-1-Y h:12 - Ø:15

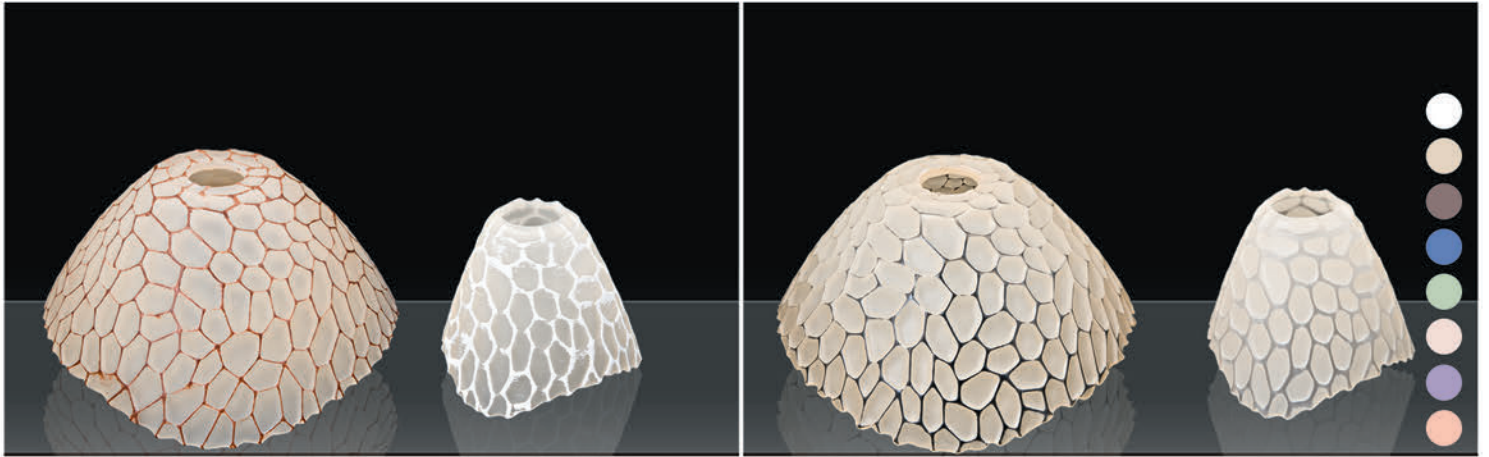


1182-A-TS h:12 - Ø:27

1182-A-MS h:12 - Ø:27

1178-A-1-FS h:12 - Ø:27

1178-B-MS h:11 - Ø:15



1152-A-1-FS h:13 - Ø:28

1152-B-1-FS h:12 - Ø:15(E27)

1152-A-1-TS h:13 - Ø:28

1152-B-1-TS h:12 - Ø:15(E27)

1152-A-1-MS h:13 - Ø:28

1152-B-1-MS h:12 - Ø:15(E27)



1152-A-1 h:13 - Ø:28

1152-B-1 h:12 - Ø:15(E27)

1158-A-1 h:15 - Ø:28

1158-B-1 h:11 - Ø:17(E27)

1158-C-1 h:11 - Ø:14(E27)



1158-A-1-MS h:15 - Ø:28

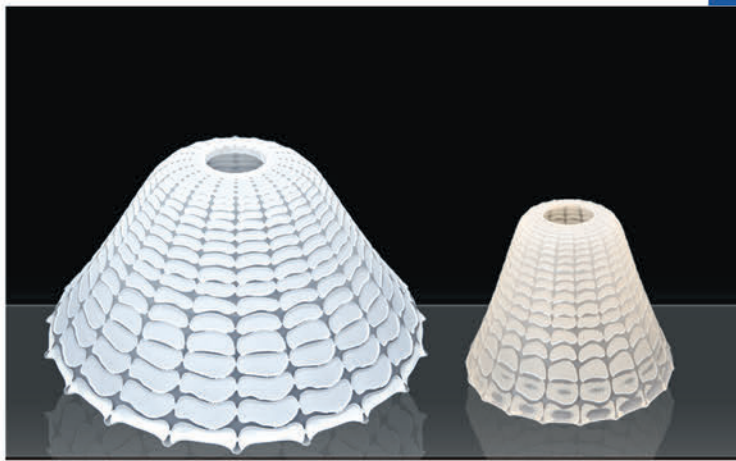
1158-B-1-MS h:11 - Ø:17(E27)

1158-C-1-MS h:11 - Ø:14(E27)

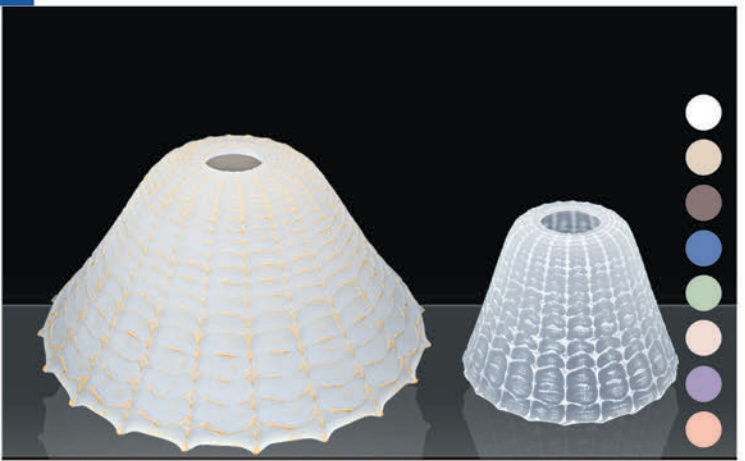
1158-A-1-FS h:15 - Ø:28

1158-B-FS h:11 - Ø:17(E27)

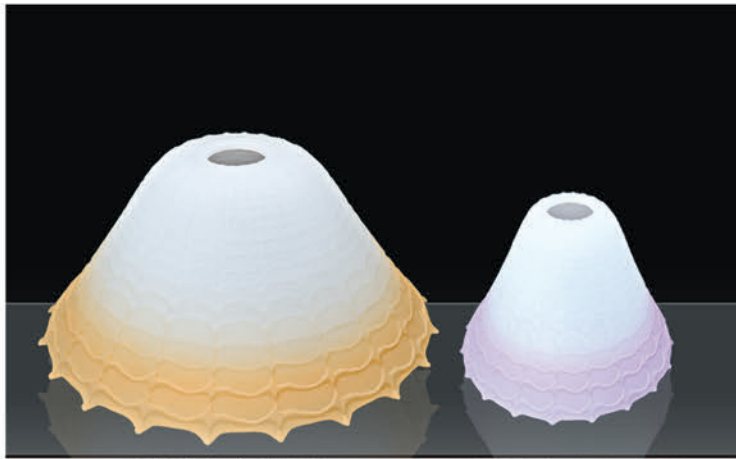
1158-C-FS h:11 - Ø:14(E27)



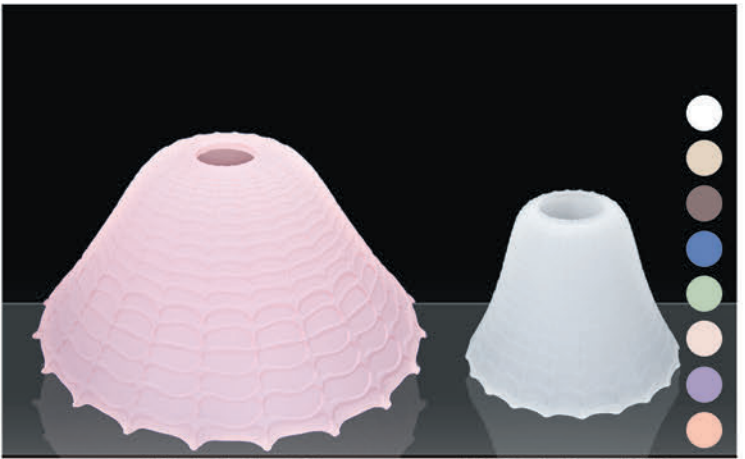
1156-A-1-MS h:14 - Ø:30

1156-B-1-MS h:12 - Ø:16(E27)
1156-C-1-MS h:11 - Ø:14(E27)

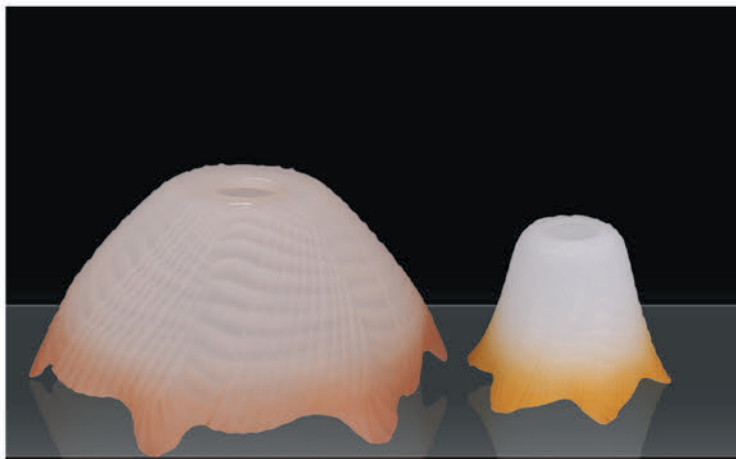
1156-A-1-FS h:14 - Ø:30

1156-B-1-FS h:12 - Ø:16(E27)
1156-C-1-FS h:11 - Ø:14(E27)

1156-A-31 h:14 - Ø:30

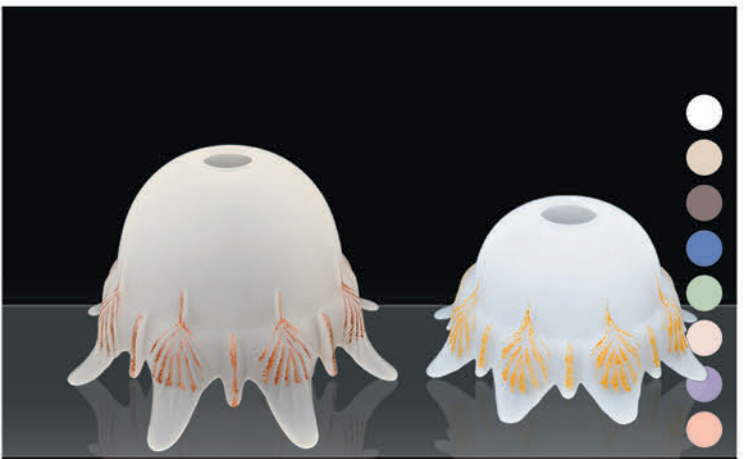
1156-B-31 h:12 - Ø:16(E27)
1156-C-31 h:11 - Ø:14(E27)

1156-A-1 h:14 - Ø:30

1156-B-1 h:12 - Ø:16(E27)
1156-C-1 h:11 - Ø:14(E27)

1177-A-31 h:12 - Ø:27

1177-B-31 h:11 - Ø:15(E27)



1157-A-1-FS h:18 - Ø:30

1157-B-1-FS h:12 - Ø:23(E27)
1157-C-1-FS h:11 - Ø:17(E27)

1157-A-31 h:18 - Ø:30

1157-B-31 h:12 - Ø:23(E27)
1157-C-31 h:11 - Ø:17(E27)

1157-A-1 h:18 - Ø:30

1157-B-1 h:12 - Ø:23(E27)
1157-C-1 h:11 - Ø:17(E27)



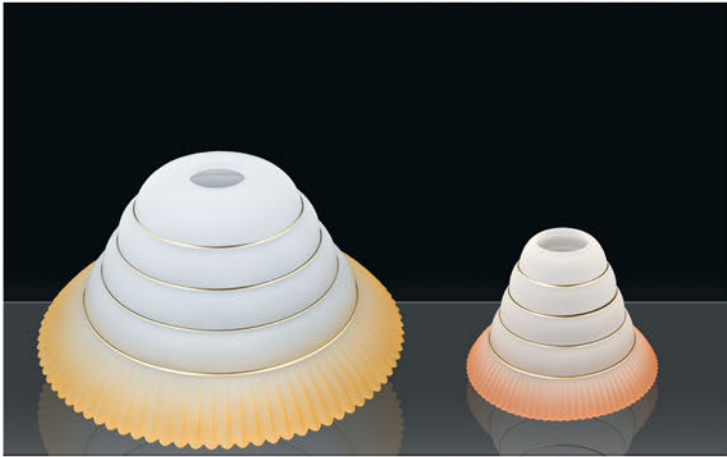
1155-A-1-Y h:13 - Ø:28

1155-B-1-Y h:12 - Ø:16(E27)



1155-A-3-FS-Y h:13 - Ø:28

1155-B-3-FS-Y h:12 - Ø:16(E27)



1155-A-31-Y h:13 - Ø:28

1155-B-31-Y h:12 - Ø:16(E27)



1138-31 h:16 - Ø:36

1138-A-31 h:16 - Ø:28

1138-B-31 h:12 - Ø:17(E27)

1138-C-31 h:12 - Ø:16(E14)

1138-1 h:16 - Ø:36

1138-A-1 h:16 - Ø:28

1138-B-1 h:12 - Ø:17(E27)

1138-C-1 h:12 - Ø:16(E14)



1138-1-FS-Y h:16 - Ø:36

1138-A-1-FS-Y h:16 - Ø:28

1138-B-1-FS-Y h:12 - Ø:17



1138-1-Y h:16 - Ø:36

1138-A-1-Y h:16 - Ø:28

1138-B-1-Y h:12 - Ø:17(E27)



1148-31 h:14 - Ø:36

1148-A-31 h:13 - Ø:30

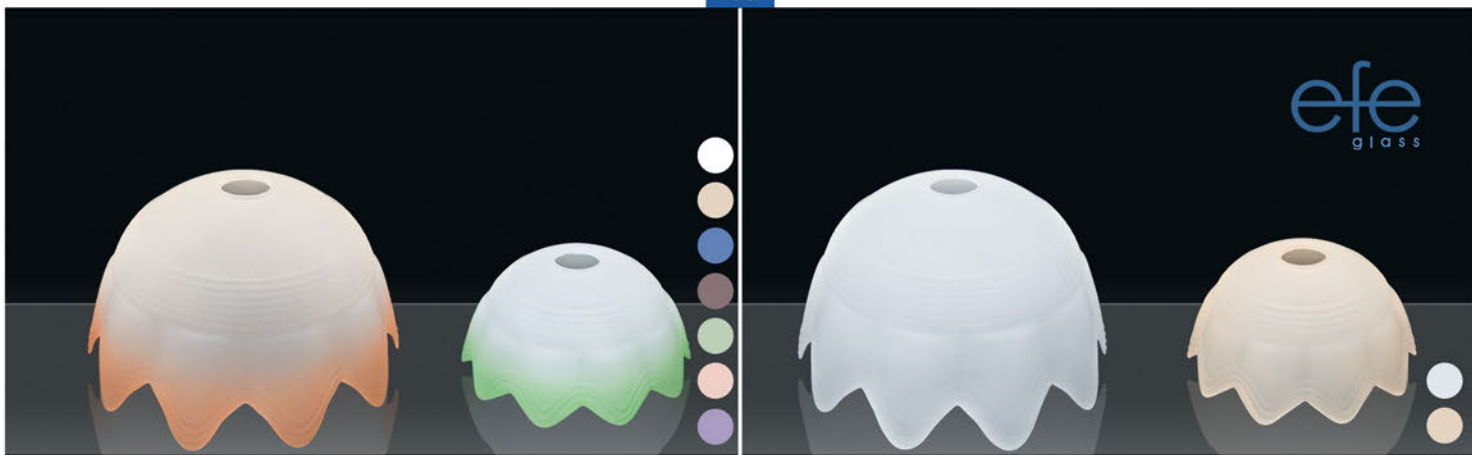
1148-B-31 h:12 - Ø:15(E27)



1148-1 h:14 - Ø:36

1148-A-1 h:13 - Ø:30

1148-B-1 h:12 - Ø:15(E27)



1154-A-31 h:18 - Ø:30

1154-B-31 h:11 - Ø:23

1154-A-1 h:18 - Ø:30

1154-B-1 h:11 - Ø:23



1143-31 h:16 - Ø:36
1143-A-31 h:14 - Ø:26

1143-B-31 h:12 - Ø:15(E27)

1143-1 h:16 - Ø:36
1143-A-1 h:14 - Ø:26

1143-B-1 h:12 - Ø:15(E27)



1140-1-FS h:13 - Ø:36

1140-A-1-FS h:12 - Ø:30

1195-A-1-MS h:16 - Ø:30

1195-C-1-MS h:13 - Ø:16(E27)

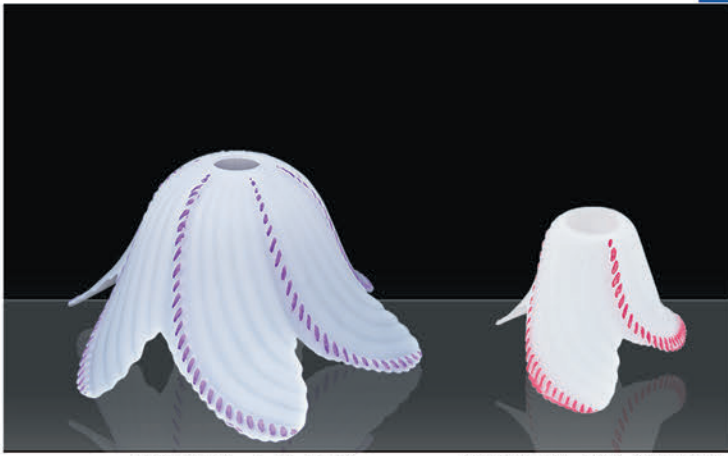


1147-1 h:18 - Ø:34
1147-A-30-1 h:15 - Ø:30
1147-A-1 h:13 - Ø:26

1147-B-1 h:12 - Ø:17(E27)

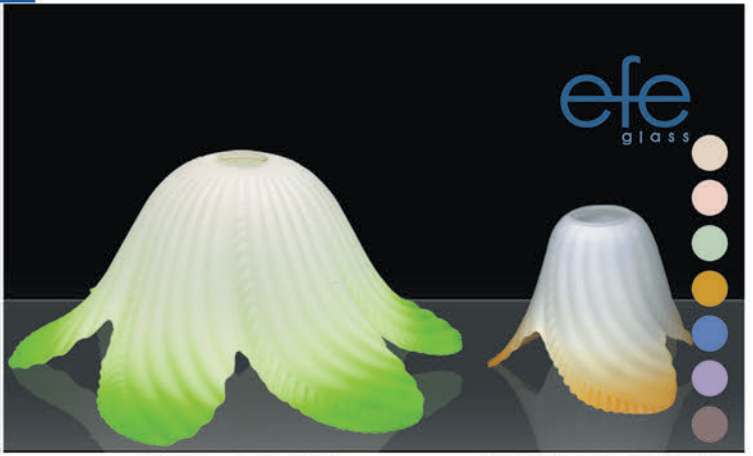
1128-A-31-FS h:13 - Ø:30

1128-A-31 h:13 - Ø:30



1163-1-F-S h:18 - Ø:38
1163-A-1-F-S h:18 - Ø:36
1163-B-1-F-S h:15 - Ø:26

1163-C-1-F-S h:12 - Ø:18(E27)
1163-D-1-F-S h:11 - Ø:15(E14)



1163-3-1 h:18 - Ø:38
1163-A-3-1 h:18 - Ø:36
1163-B-3-1 h:15 - Ø:26

1163-C-31 h:12 - Ø:18(E27)
1163-D-31 h:11 - Ø:15(E14)



1135-1-F-S h:15 - Ø:35
1135-A-1-F-S h:16 - Ø:28

1135-B-1-F-S h:12 - Ø:17(E27)
1135-C-1-F-S h:12 - Ø:17(E14)



1135-51 h:15 - Ø:35
1135-A-51 h:16 - Ø:28
1135-B-51 h:12 - Ø:17(E27)
1135-C-51 h:12 - Ø:17(E14)

1135-61 h:15 - Ø:35
1135-A-61 h:16 - Ø:28
1135-B-61 h:12 - Ø:17(E27)
1135-C-61 h:12 - Ø:17(E14)



1135-31 h:15 - Ø:35
1135-A-31 h:16 - Ø:28

1135-B-31 h:12 - Ø:17(E27)
1135-C-31 h:12 - Ø:16(E14)



1134-3-1 h:20 - Ø:30
1134-A-3-1 h:18 - Ø:25

1134-6-1 h:20 - Ø:30
1134-A-6-1 h:18 - Ø:25



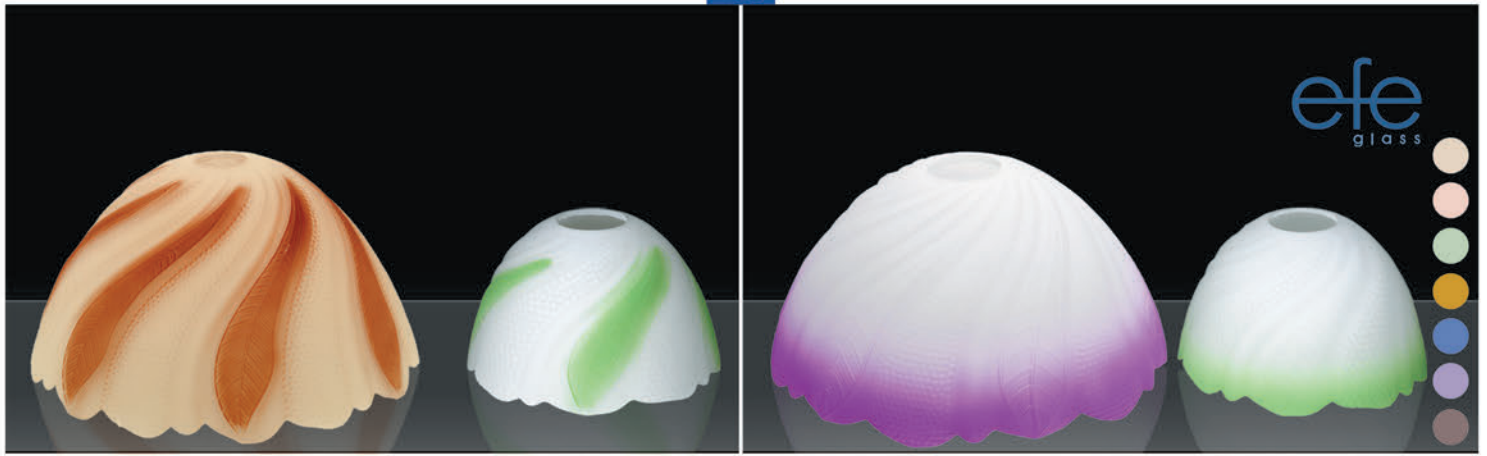
1170-31 h:16 - Ø:36
1170-A-31 h:13 - Ø:31

1170-B-31 h:11 - Ø:14(E27)



1170-1 h:16 - Ø:36
1170-A-1 h:13 - Ø:31

1170-B-1 h:11 - Ø:14(E27)



1141-81 h:18 - Ø:34
1141-A-81 h:16 - Ø:25

1141-B-81 h:12 - Ø:16(E27)

1141-31 h:18 - Ø:34
1141-A-31 h:16 - Ø:25

1141-B-31 h:12 - Ø:16(E27)



1141-1 h:18 - Ø:34
1141-A-1 h:16 - Ø:25

1141-B-1 h:12 - Ø:16(E27)

1164-51 h:18 - Ø:37
1164-A-51 h:15 - Ø:29

1164-B-51 h:12 - Ø:16(E27)
1164-C-51 h:11 - Ø:15(E14)



1136-61 h:16 - Ø:38
1136-A-61 h:15 - Ø:30
1136-C-61 h:12 - Ø:15(E27)

1136-51 h:16 - Ø:38
1136-A-51 h:15 - Ø:30
1136-C-51 h:12 - Ø:15(E27)

1136-31 h:16 - Ø:38
1136-A-31 h:15 - Ø:30
1136-C-31 h:12 - Ø:15(E27)

1136-1 h:16 - Ø:38
1136-A-1 h:15 - Ø:30
1136-C-1 h:12 - Ø:15(E27)



1139-51 h:16 - Ø:37
1139-A-51 h:14 - Ø:29

1139-B-51 h:12 - Ø:16(E27)

1139-31 h:16 - Ø:37
1139-A-31 h:14 - Ø:29
1139-B-31 h:12 - Ø:16(E27)

1139-1 h:16 - Ø:37
1139-A-1 h:14 - Ø:29
1139-B-1 h:12 - Ø:16(E27)



1146-31 h:17 - Ø:40
1146-A-31 h:16 - Ø:32

1146-B-31 h:11 - Ø:15(E27)
1146-C-31 h:11 - Ø:14(E14)

1146-1 h:17 - Ø:40
1146-A-1 h:16 - Ø:32

1146-B-1 h:11 - Ø:15(E27)
1146-C-1 h:11 - Ø:14(E14)



148-31 h:14 - Ø:37
148-A-31 h:12 - Ø:28
148-C-31 h:10 - Ø:18(E27)

148-1 h:14 - Ø:37
148-A-1 h:12 - Ø:28
148-C-1 h:10 - Ø:18(E27)

148-ALB h:14 - Ø:37
148-A-ALB h:12 - Ø:28

148-C-ALB h:10 - Ø:18(E27)

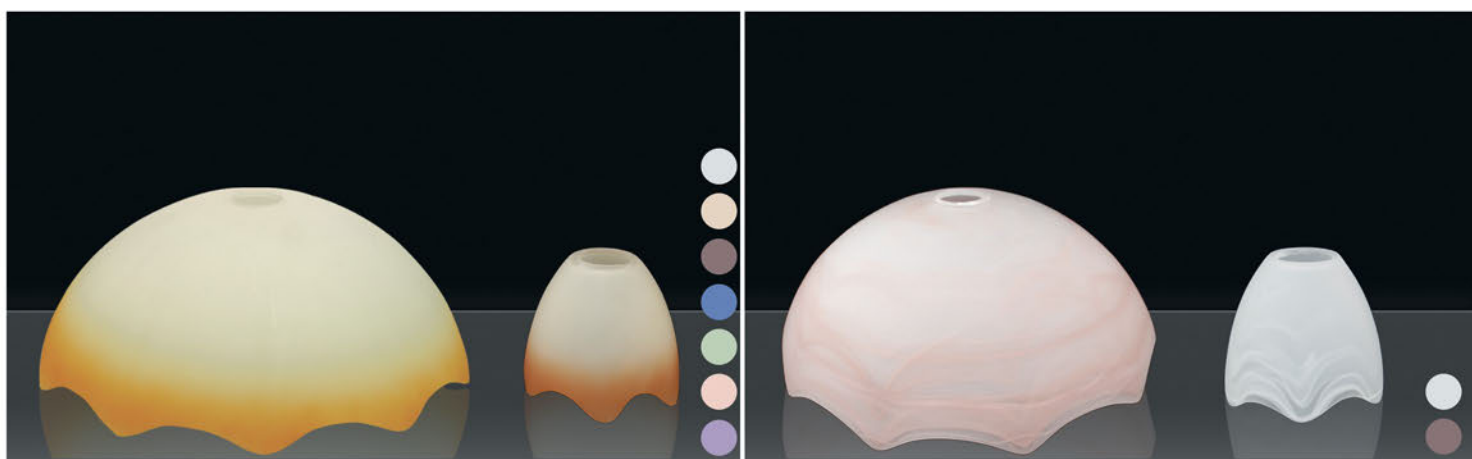


147-31 h:12 - Ø:37
147-A-31 h:10 - Ø:27

147-B-31 h:10 - Ø:18(E27)

1191-A-31 h:14 - Ø:27

1191-B-31 h:12 - Ø:14(E27)



139-31 h:14 - Ø:36
139-A-31 h:12 - Ø:27

139-B-31 h:10 - Ø:13(E27)

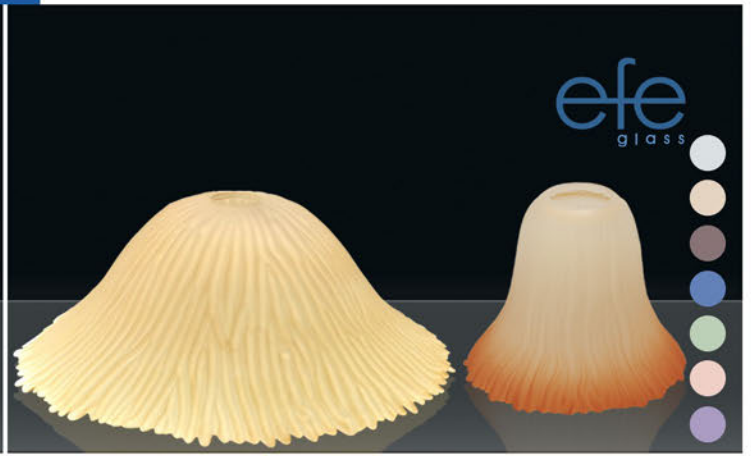
139-ALB h:14 - Ø:36
139-A-ALB h:12 - Ø:27

139-B-ALB h:10 - Ø:13(E27)



1112-1 h:11 - Ø:40
 1112-A-1 h:12 - Ø:28
 1112-B-1 h:11 - Ø:18(E27)
 1112-C-1 h:12 - Ø:16(E27)

1112-31 h:11 - Ø:40
 1112-A-31 h:12 - Ø:28
 1112-B-31 h:11 - Ø:18(E27)
 1112-C-31 h:12 - Ø:16(E27)



1193-1 h:14 - Ø:40
 1193-C-1 h:13 - Ø:15(E27)

1193-31 h:14 - Ø:40
 1193-C-31 h:13 - Ø:15(E27)



112-31 h:14 - Ø:38
 112-A-31 h:12 - Ø:30

112-C-31 h:11 - Ø:15(E27)
 112-D-31 h:10 - Ø:16(E27)



112-1 h:14 - Ø:38
 112-A-1 h:12 - Ø:30

112-C-1 h:11 - Ø:15(E27)
 112-D-1 h:10 - Ø:16(E27)



114-ALB h:14 - Ø:34
 114-A-ALB h:12 - Ø:25

114-B-ALB h:10 - Ø:18



126-1 h:16 - Ø:32

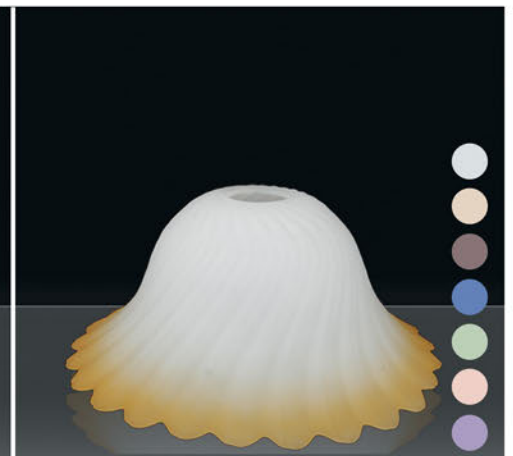
126-A-1 h:16 - Ø:22



101-B-31 h:11 - Ø:24



103-B-31 h:12 - Ø:24



102-A-31 h:12 - Ø:26



1126-1-FS h:16 - Ø:35
1126-30-1-FS h:14 - Ø:29
1126-A-1-FS h:12 - Ø:25

1126-B-1-FS h:12 - Ø:18(E27)
1126-C-1-FS h:13 - Ø:11(E27)



e
fe
glass

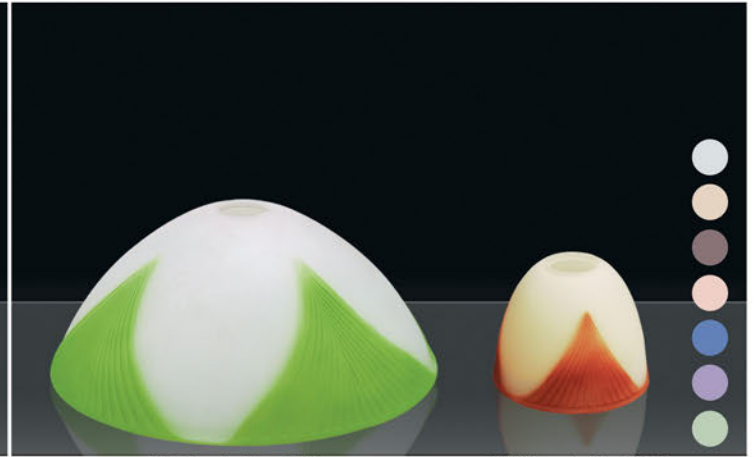
1145-31-S h:16 - Ø:38
1145-A-31-S h:12 - Ø:30
1145-B-31-S h:11 - Ø:26(E27)

1145-D-31-S h:9 - Ø:16(E27)
1145-C-31-S h:12 - Ø:14(E27)



1037-31-S h:13 - Ø:37
1037-A-31-S h:12 - Ø:25

1037-B-31-S h:9 - Ø:17(E27)



144-3 h:15 - Ø:36
144-A-3 h:13 - Ø:26
144-B-3 h:11 - Ø:14(E27)

144-31 h:15 - Ø:36
144-A-31 h:13 - Ø:26
144-B-31 h:11 - Ø:14(E27)



093-1-Y h:13 - Ø:38
093-A-1-Y h:12 - Ø:25
093-B-1-Y h:9 - Ø:17(E27)

093-31-Y h:13 - Ø:38
093-A-31-Y h:12 - Ø:25
093-B-31-Y h:9 - Ø:17(E27)



146-3-1-S h:16 - Ø:35
146-A-3-1-S h:11 - Ø:25

146-B-3-1-S h:9 - Ø:17(E27)



132-3-Y h:14 - Ø:38
132-A-3-Y h:12 - Ø:26
132-B-3-Y h:11 - Ø:17(E27)

132-31-Y h:14 - Ø:38
132-A-31-Y h:12 - Ø:26
132-B-31-Y h:11 - Ø:17(E27)



134-31-Y h:12 - Ø:44
134-A-31-Y h:9 - Ø:25

134-B-3-Y h:8 - Ø:19(E27)

107-45-1 h:10 - Ø:45
 107-40-1 h:10 - Ø:40
 107-35-1 h:10 - Ø:35
 107-30-1 h:10 - Ø:30
 107-25-1 h:10 - Ø:25
 107-20-1 h: 8 - Ø:20



1007-16-1 h:9 - Ø:16(E27)

efe
glass

1133-1 h:13,5 - Ø:40
1133-A-1 h:12 - Ø:30

1133-B-1 h:10 - Ø:16(E27)

133-1 h:12 - Ø:42
133-A-1 h:9 - Ø:26

133-B-1 h:7 - Ø:17(E27)



1137-1 h:13 - Ø:37

1137-A-1 h:9 - Ø:26

1006-1 h:14 - Ø:40
106-1 h:15 - Ø:36
1006-A-1 h:13 - Ø:301006-B-1 h: 9 - Ø:16(E27)
106-C-1 h:11 - Ø:14(E27)1006-ALB h:14 - Ø:40
106-ALB h:15 - Ø:36
1006-A-ALB h:13 - Ø:301006-B-ALB h: 9 - Ø:16(E27)
106-C-ALB h:11 - Ø:14(E27)105-1-ALB h:15 - Ø:37
105-A-1-ALB h:11 - Ø:28105-C-1-ALB h:9 - Ø:17
105-D-1-ALB h:11 - Ø:15(E27)105-ALB h:15 - Ø:37
105-A-ALB h:11 - Ø:28105-C-ALB h:9 - Ø:17
105-D-ALB h:11 - Ø:15(E27)



1137-ALB-1 h:13 - Ø:37

1137-3-ALB-Y h:13 - Ø:37

1038-ALB-1 h:16 - Ø:45

1038-3-ALB-Y h:16 - Ø:45

44-ALB h:11 - Ø:28
44-A-ALB h:9 - Ø:2344-1-ALB h:11 - Ø:28
44-A-1-ALB h:9 - Ø:23

1034-ALB-1 h:16 - Ø:37

1034-3-ALB-Y h:16 - Ø:37



1036-ALB-1 h:21 - Ø:40

1036-3-ALB-Y h:21 - Ø:40

1039-ALB-1 h:20 - Ø:32

1039-A-ALB-1 h:16 - Ø:22

1039-B-ALB-1 h:12 - Ø:16

1039-3-ALB-Y h:20 - Ø:32

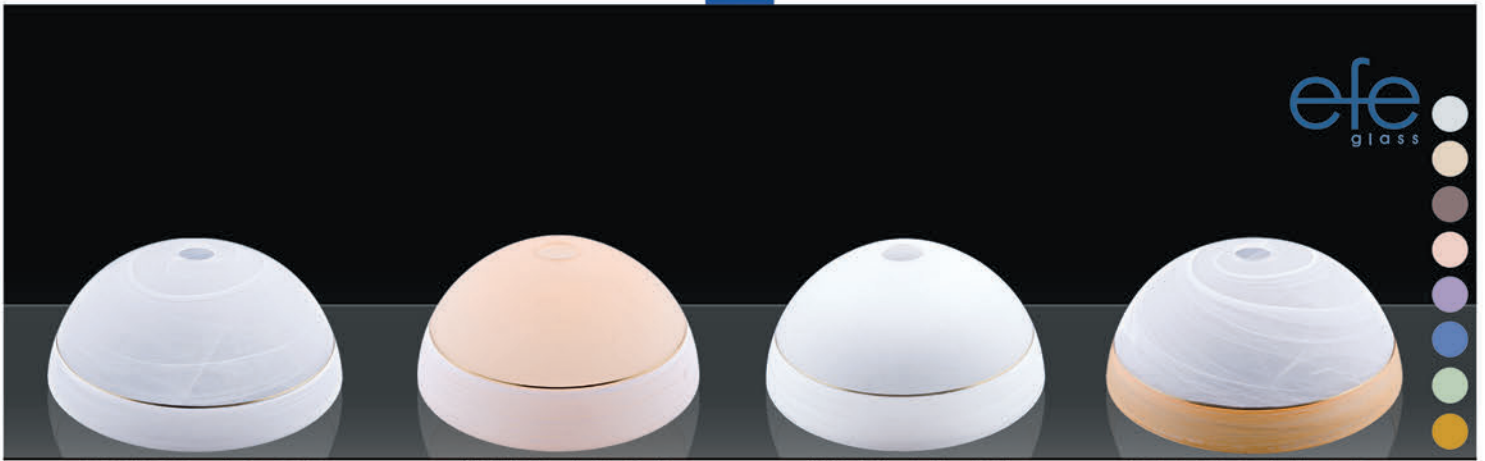
1039-A-3ALB-Y h:16 - Ø:22

1039-B-3-ALB-Y h:12 - Ø:16

1147-ALB-1 h:18 - Ø:34
1147-A-ALB-1 h:13 - Ø:261147-3-ALB-Y h:18 - Ø:34
1147-A-3-ALB-Y h:13 - Ø:26

1106-ALB-1 h:29 - Ø:30

1106-3-ALB-Y h:29 - Ø:30



106-3-ALB-Y h:15 - Ø:36
106-C-3-ALB-Y h:11 - Ø:14

1006-31-Y h:14 - Ø:40
106-31-Y h:15 - Ø:36
1006-A-31-Y h:13 - Ø:30
106-C-31-Y h:11 - Ø:14

1006-3-Y h:14 - Ø:40
106-3-Y h:15 - Ø:36
1006-A-3-Y h:13 - Ø:30
106-C-3-Y h:11 - Ø:14

1006-3-ALB-Y h:14 - Ø:40
1006-A-3-ALB-Y h:13 - Ø:30



106-OYP h:15 - Ø:36
1006-A-OYP h:13 - Ø:30
106-A-OYP h:10 - Ø:22

106-OYP h:15 - Ø:36
1006-A-OYP h:13 - Ø:30
106-A-OYP h:10 - Ø:22

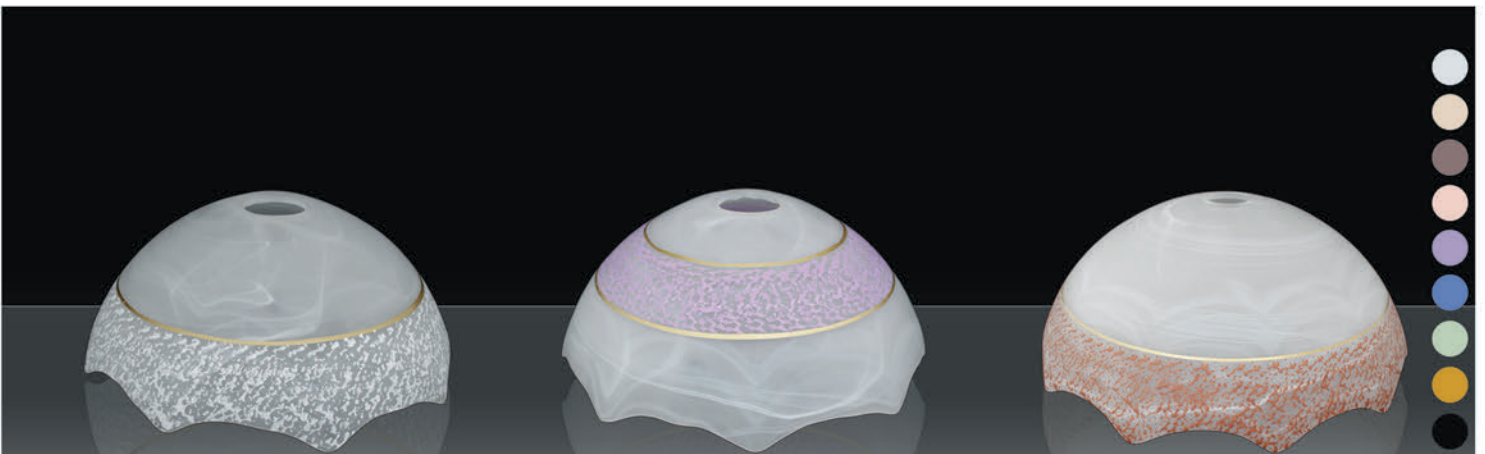
106-YP h:15 - Ø:36
1006-A-YP h:13 - Ø:30
106-A-YP h:10 - Ø:22



105-YP h:15 - Ø:37
105-A-YP h:11 - Ø:28

105-YP h:15 - Ø:37
105-A-YP h:11 - Ø:28

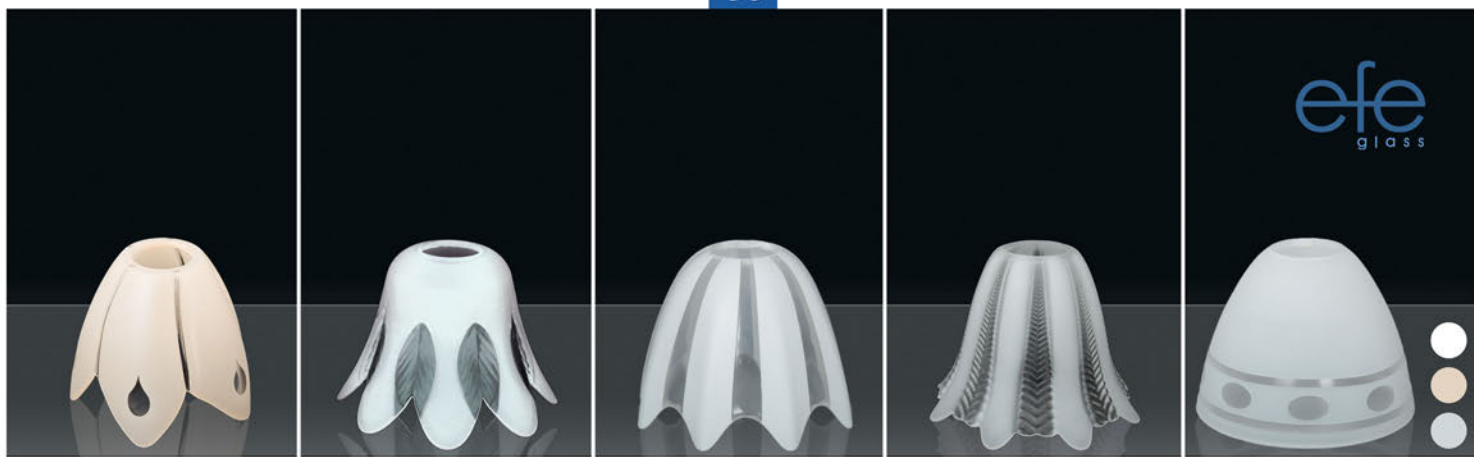
1147-OYP h:18 - Ø:34
1147-A-OYP h:13 - Ø:26



139-YP h:14 - Ø:36
139-A-YP h:12 - Ø:27

139-OYP h:14 - Ø:36
139-A-OYP h:12 - Ø:27

139-YP h:14 - Ø:36
139-A-YP h:12 - Ø:27



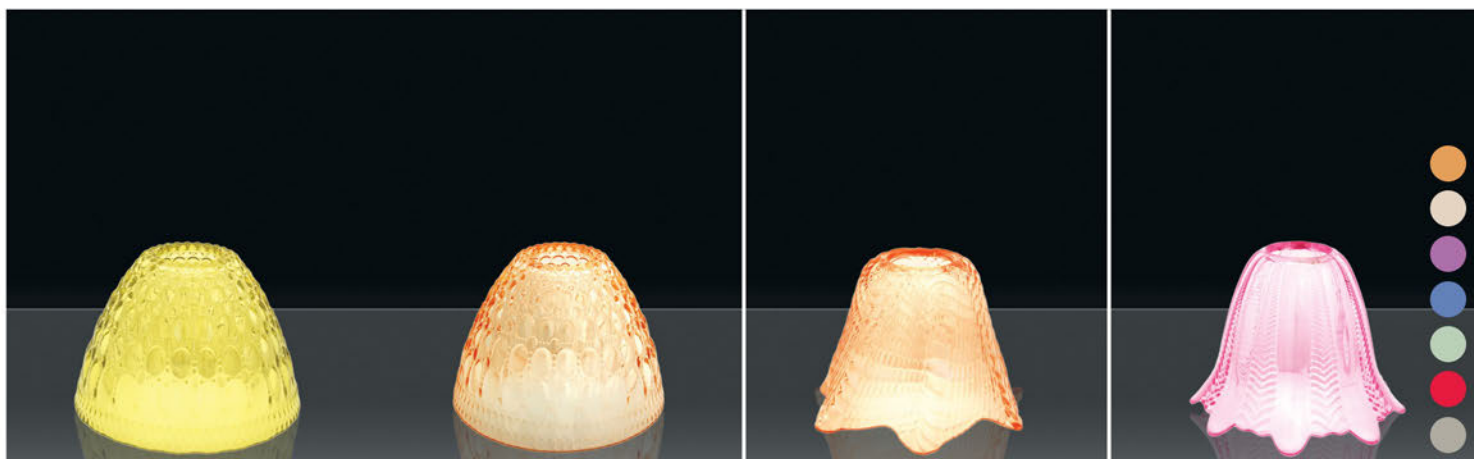
1160-B-5 h:11 - Ø:14(E27)

1211-B-5 h:12 - Ø:15(E27)

1189-B-5 h:11 - Ø:14(E27)

1179-B-5 h:11.5 - Ø:15.5(E27)

106-C-5-32 h:11 - Ø:14(E27)



1178-B-1-6 h:11 - Ø:15(E27)

1178-B-1-6 h:11 - Ø:15(E27)

1177-B-1-6 h:11 - Ø:15(E27)

1179-B-1-6 h:11 - Ø:15(E27)

077-ALB h:19 - Ø:12(E27)
077-B-ALB h:12 - Ø:8(E14)077-1 h:19 - Ø:12(E27)
077-B-1 h:12 - Ø:8(E14)

077-5 h:19 - Ø:12(E27)

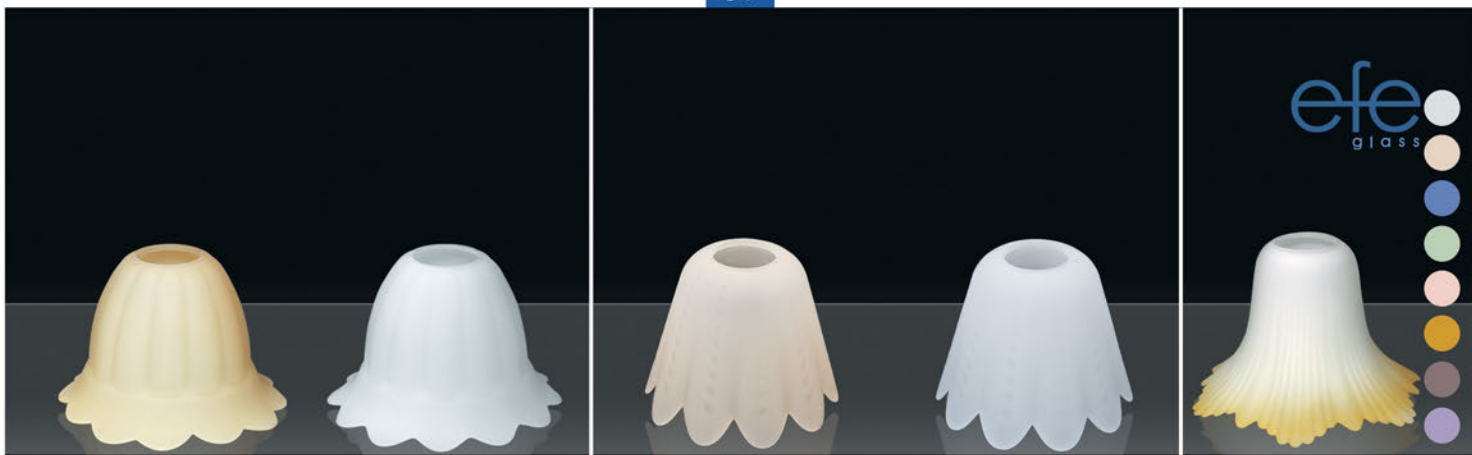
077-B-5 Su Yolu h:12 - Ø:8(E14)

1197-B-1 h:11 - Ø:13(E27)
1197-C-1 h:10 - Ø:11(E14)

1198-C h:10 - Ø:11(E14)

1181-B-1 h:12 - Ø:15(E27)

1180-B-31 h:12 - Ø:15(E27)



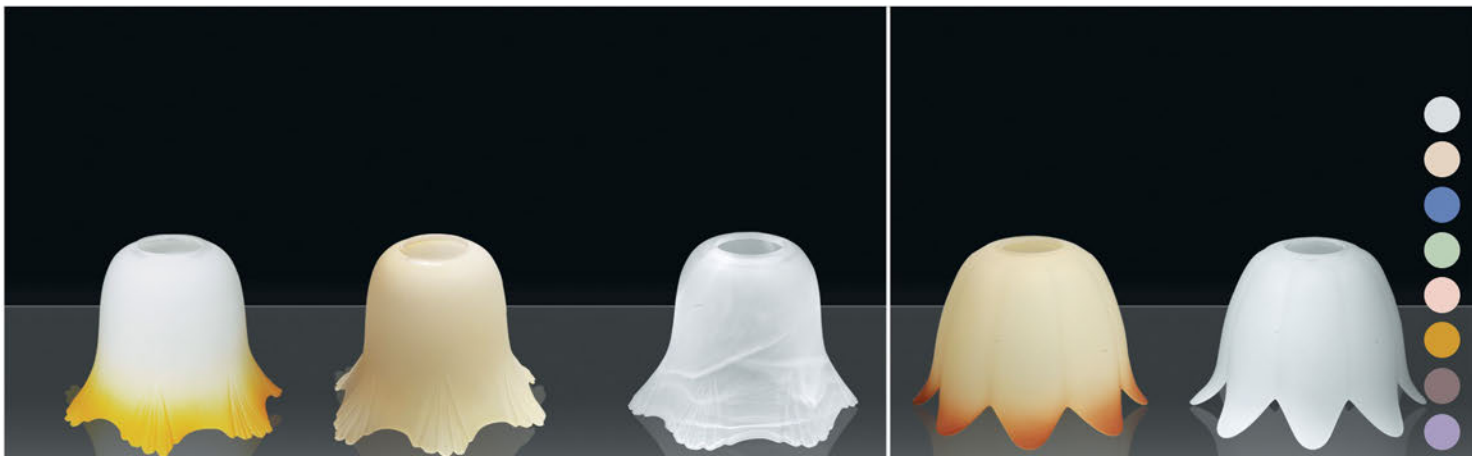
081-C-1 h:10 - Ø:15(E27)

081-C-1 h:10 - Ø:15(E27)

1153-D-1 h:11 - Ø:14(E27)

1153-D-1 h:11 - Ø:14(E27)

037-31 h:16 - Ø:11(E27)



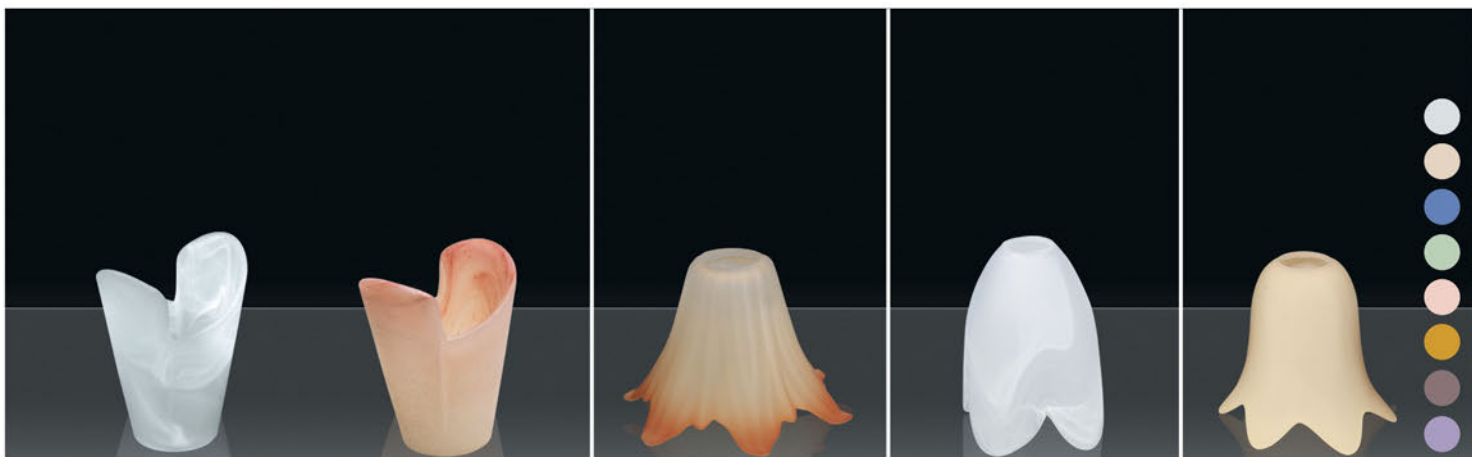
094-31 h:12 - Ø:16(E27)

094-1 h:12 - Ø:16(E27)

094-ALB h:12 - Ø:16(E27)

097-31 h:12 - Ø:16(E27)

097-1 h:12 - Ø:16(E27)



098-ALB h:12 - Ø:16(E27)

098-1-ALB h:12 - Ø:16(E27)

1199-C-31 h:11 - Ø:12(E14)

0024-ALB h:12 - Ø:10(E14)

0035-1 h:10 - Ø:13(E14)

098-C-ALB h:10 - Ø:11(E14)

098-C-1-ALB h:10 - Ø:11(E14)



101-D-ALB h:11 - Ø:13(E27)

101-D-1 h:11 - Ø:13(E27)

101-C-31 h:12 - Ø:14(E27)

101-C-1 h:12 - Ø:14(E27)

103-D-1 h:10 - Ø:15(E27)



Armatür Camlar

Plaffonier Glass



camın
efe'ndisi
glass

www.efecam.com.tr
www.efeglass.com

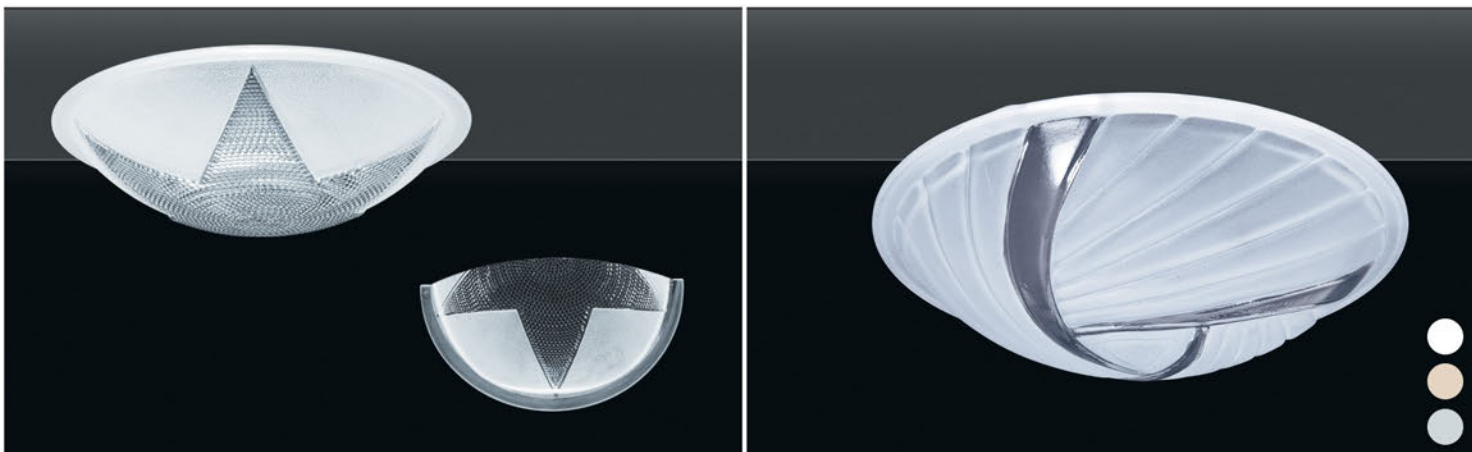


2116-40-5 h:11 - Ø:40
2116-30-5 h:7 - Ø:30
2116-25-5 h:7 - Ø:25

2116-30-2-5 h:7 - Ø:30-15

2108-40-5 h:8 - Ø:40
2108-30-5 h:7 - Ø:30

2108-30-2-5 h:7 - Ø:30-15



2113-40-5 h:11 - Ø:40
2113-30-5 h:7 - Ø:30

2113-30-2-5 h:7 - Ø:30-15

2114-40-5 h:11 - Ø:40
2114-30-5 h:7 - Ø:30



2117-40-5 h:11 - Ø:40
2117-30-5 h:7 - Ø:30
2117-25-5 h:7 - Ø:25

2117-30-2-5 h:7 - Ø:30-15

2118-40-5 h:11 - Ø:40
2118-30-5 h:7 - Ø:30
2118-25-5 h:7 - Ø:25

2118-30-2-5 h:7 - Ø:30-15



2129-40-31 SP h:11 - Ø:40
2129-30-31 SP h:7 - Ø:30

2129-30-31-2 SP h:7 - Ø:30-15

2131-40-31 SP h:11 - Ø:40
2131-30-31 SP h:7 - Ø:30

2131-30-31-2 SP h:7 - Ø:30-15



2124-40-1-FS h:11 - Ø:40
2124-30-1-FS h:7 - Ø:30

2124-30-1-2-FS h:7 - Ø:30-15

2126-40-1-FS h:11 - Ø:40
2126-30-1-FS h:7 - Ø:30
2126-25-1-FS h:7 - Ø:25

2126-30-1-2-FS h:7 - Ø:30-15



2128-40-3-FS h:11 - Ø:40
2128-30-3-FS h:7 - Ø:30

2128-30-3-2-FS h:7 - Ø:30-15

2127-40-3-FS h:11 - Ø:40
2127-30-3-FS h:7 - Ø:30

2127-30-3-2-FS h:7 - Ø:30-15

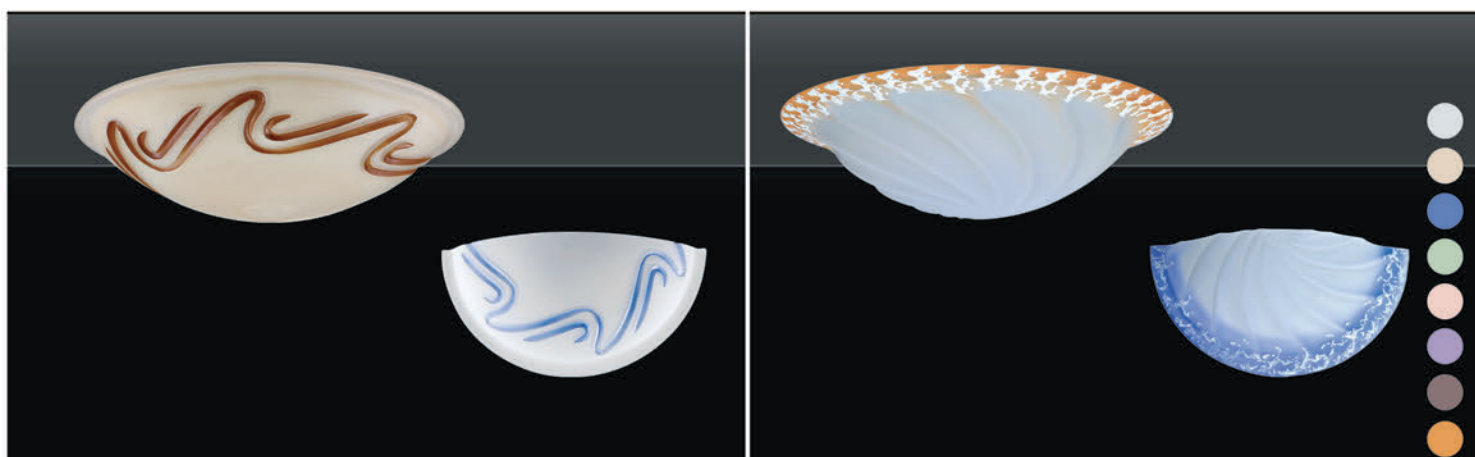


2130-40-3-MS h:11 - Ø:40
2130-30-3-MS h:7 - Ø:30

2130-30-3-2-MS h:7 - Ø:30-15

2125-40-3-S h:11 - Ø:40
2125-30-3-S h:7 - Ø:30

2125-30-3-2-S h:7 - Ø:30-15

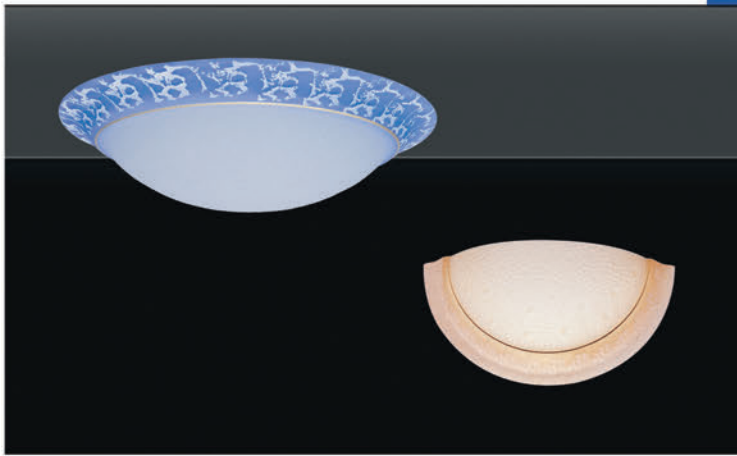


2120-40-31-S h:11 - Ø:40
2120-30-31-S h:7 - Ø:30
2120-25-31-S h:7 - Ø:25

2120-30-31-2-S h:7 - Ø:30-15

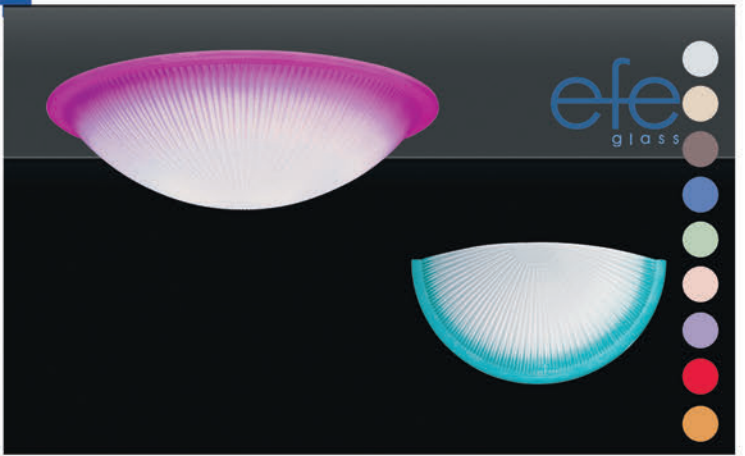
2112-40-31 h:11 - Ø:40
2112-30-31 h:7 - Ø:30
2112-25-31 h:7 - Ø:25

2112-30-31-2 h:7 - Ø:30-15



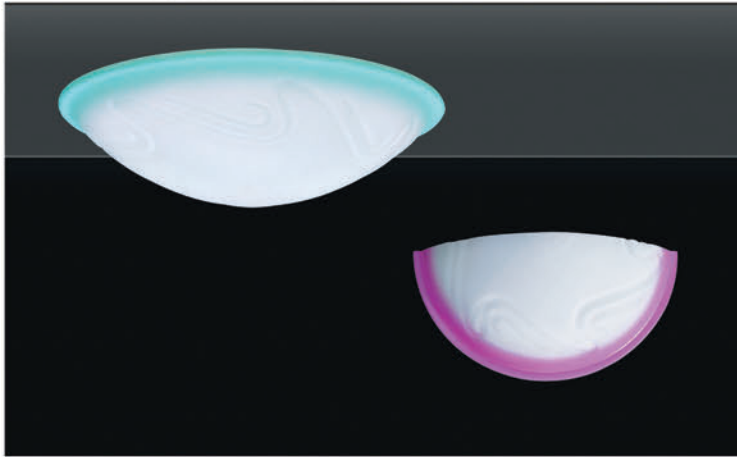
218-50-3-Y h:13 - Ø:50
218-40-3-Y h:11 - Ø:40
218-30-3-Y h:7 - Ø:30
218-25-3-Y h:7 - Ø:25

218-30-3-2-Y h:7 - Ø:30-15



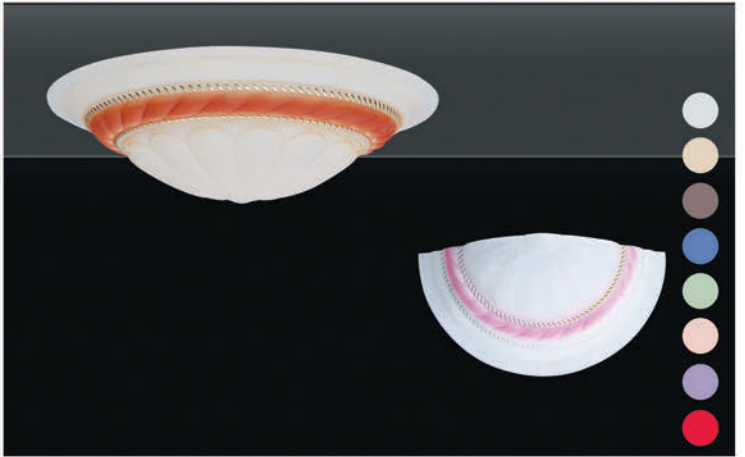
2111-50-3 h:13 - Ø:50
2111-40-3 h:11 - Ø:40
2111-30-3 h:7 - Ø:30
2111-25-3 h:7 - Ø:25

2111-30-3-2 h:7 - Ø:30-15



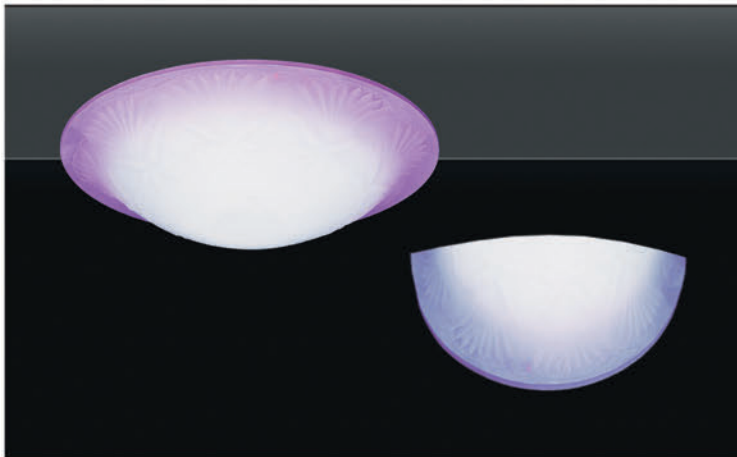
2120-40-31 h:11 - Ø:40
2120-30-31 h:7 - Ø:30
2120-25-31 h:7 - Ø:25

2120-30-31-2 h:7 - Ø:30-15



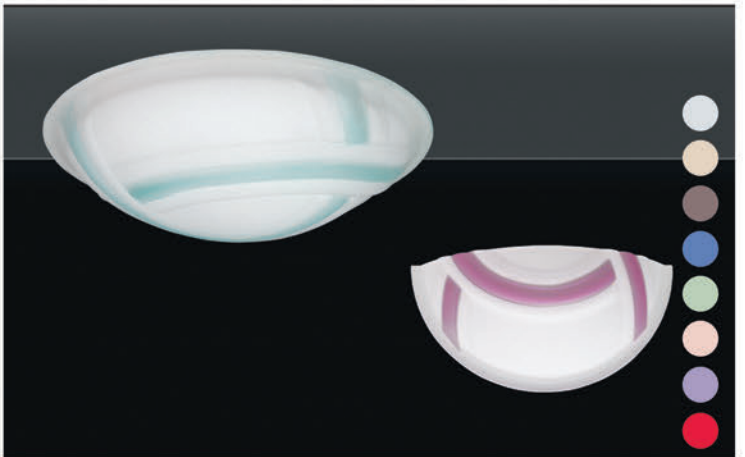
129-50-31-Y h:13 - Ø:50
129-40-31-Y h:11 - Ø:40
129-30-31-Y h:7 - Ø:30
129-25-31-Y h:7 - Ø:25

129-30-3-2-Y h:7 - Ø:30-15



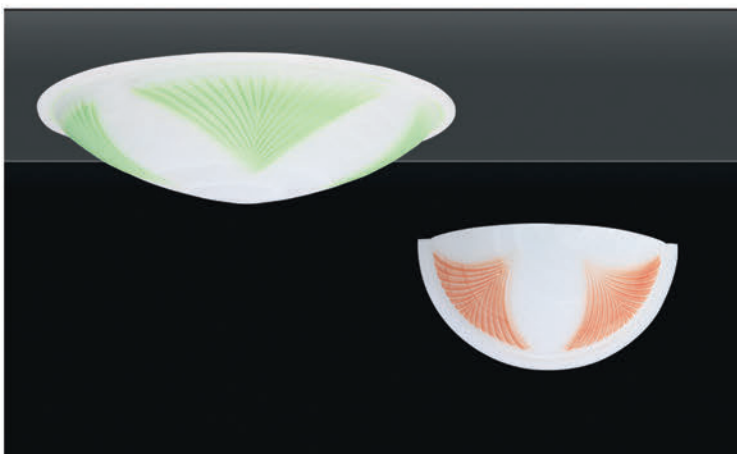
2177-40-31 h:11 - Ø:40
2177-30-31 h:7 - Ø:30

2177-30-31-2 h:7 - Ø:30-15



2116-40-51 h:11 - Ø:40
2116-30-51 h:7 - Ø:30
2116-25-51 h:7 - Ø:25

2116-30-51-2 h:7 - Ø:30-15



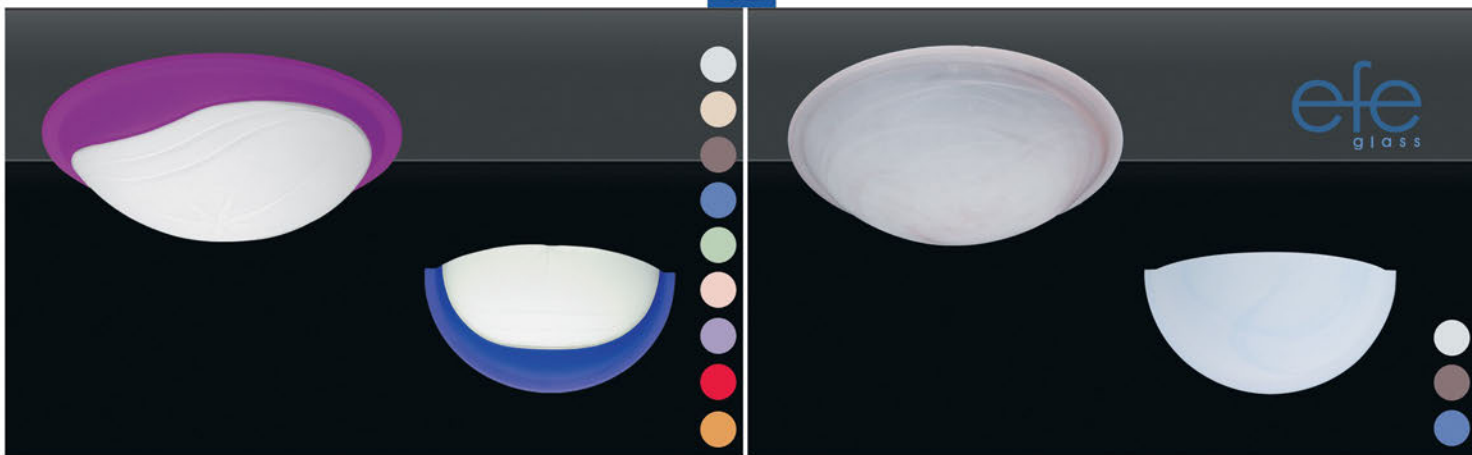
212-50-3 h:13 - Ø:50
212-40-3 h:11 - Ø:40
212-30-3 h:7 - Ø:30
212-25-3 h:7 - Ø:25

212-30-3-2 h:7 - Ø:30-15



2109-40-3-S h:11 - Ø:40
2109-30-3-S h:7 - Ø:30
2109-25-3-S h:7 - Ø:25

2109-30-3-2-S h:7 - Ø:30-15

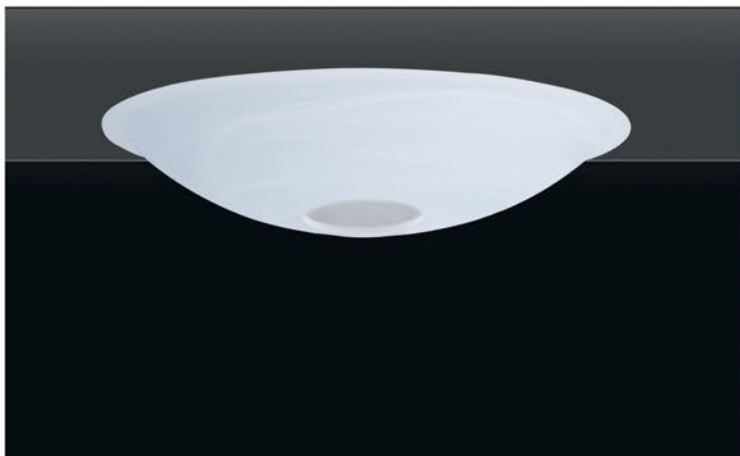


2108-40-31 h:11 - Ø:40
2108-30-31 h:7 - Ø:30

2108-30-31-2 h:7 - Ø:30-15

127-50-ALB h:13 - Ø:50
127-40-ALB h:11 - Ø:40
127-30-ALB h:7 - Ø:30
127-25-ALB h:7 - Ø:25

127-30-2-ALB h:7 - Ø:30-15



127-30-ALB Sensör Camı h:9 - Ø:30



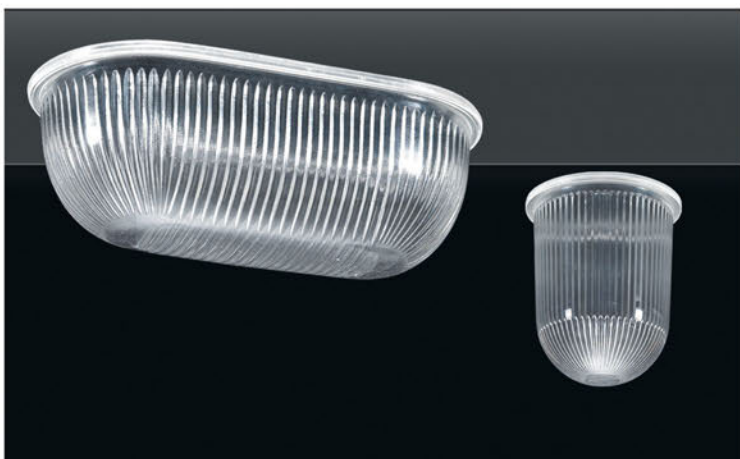
2111-25 Sensör Camı h:9 - Ø:25



2140-25 Sensör Camı h:9 - Ø:25

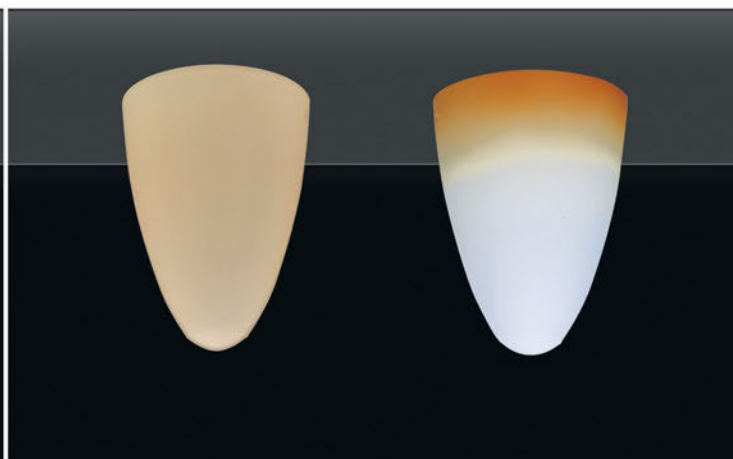


2141-25 Sensör Camı h:9 - Ø:25



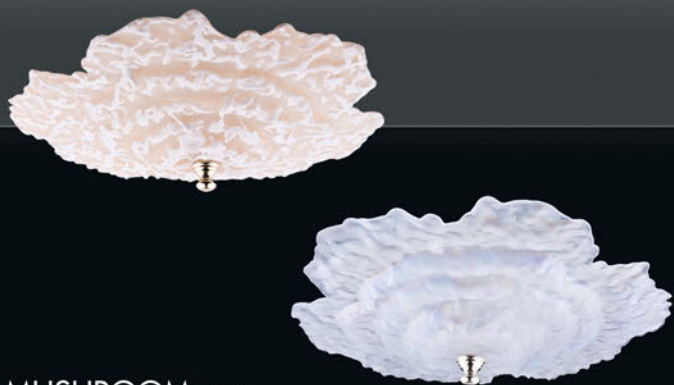
014-A h:7 - Ø:22-10
014-B h:7 - Ø:17-10

015 h:13 - Ø:10



021-1-2 h:24 - Ø:16
021-A-1-2 h:20 - Ø:15

021-31-2 h:24 - Ø:16
021-A-31-2 h:20 - Ø:15



MUSHROOM 42cm



POTPORI 40cm



VEINY 40cm



CORAL 39cm



LINDA 40cm



ANEMON 38cm



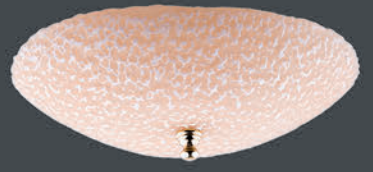
BAMBU 40cm



ELEGANCE 40cm



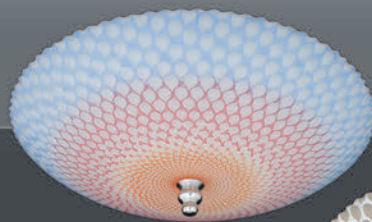
RIBLE 40cm



POPCORN 40cm



GARDENIA 40cm



DAMLA 40cm



INFINITY 33cm



MISKET 40cm



FALL 39cm

NEVBAHAR 40cm



KOBRA 37cm

NEWPAISLEY 40cm



El Yapımı Camlar

Handwork Glass





141 Bal
h:13 - Ø:12(E27)



141 Mat
h:13 - Ø:12(E27)



141-A Bal
h:12 - Ø:10(E27)



141-A Mat
h:12 - Ø:10(E27)



1691 Bal Çatlak
h:15 - Ø:10



155 - Mat
h:13 - Ø:16



154 - Mat
h:12 - Ø:12



180 Opal
h:10 - Ø:14(E-14)



1043 Opal
h:10 - Ø:10(E-27)



170 Opal
h:13 - Ø:13(E-27)



095-1-ALB
h:12 - Ø:15(E-27)



095-1
h:12 - Ø:15(E-27)



095-31
h:12 - Ø:15(E-27)



Tesisatlar

Lighting Fixture Equipments





Glop Tesisatı
Metal Globe Suspension

2018 Tesisatı
Metal 2018 Suspension

1940 Tesisatı
Metal 1940 Suspension

3 - D Tesisatı
Metal 3-D Suspension



Boru Tesisatı

Telli Tesisatı

Kablo Tesisatı

Zincir Tesisatı

..... Metal Luminaire Suspensions



Ahşap Krom Tesisatı

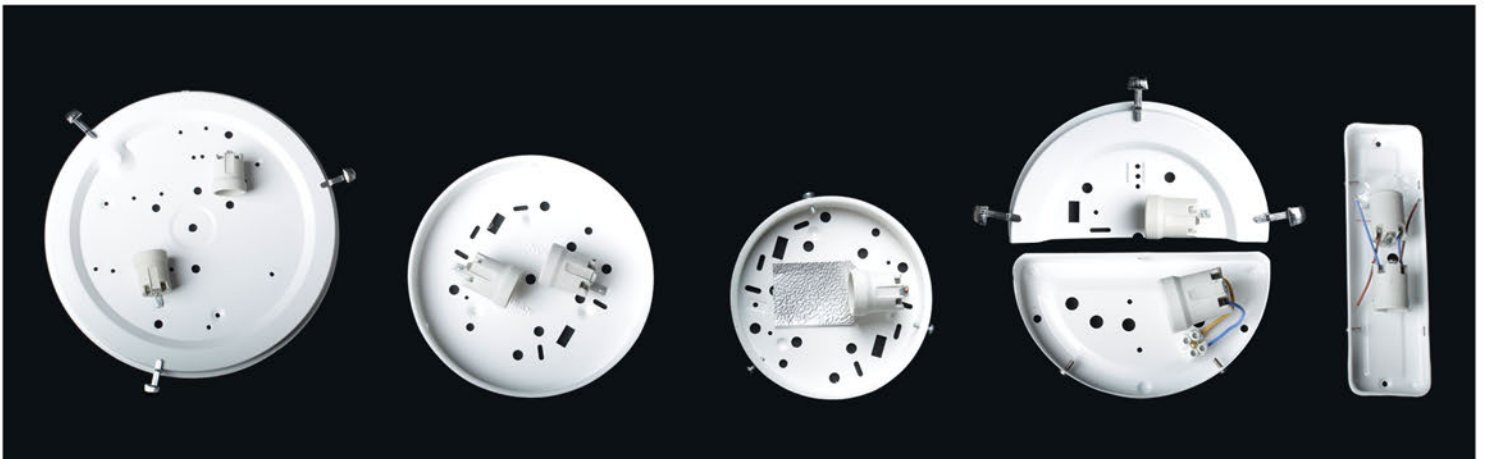
Ahşap Eskitme Tesisatı

Plastik Çocuk Odası Tesisatı

Plastik Tesisatı

Wooden Luminaire Suspensions

Plastic Luminaire Suspensions



Armatür Dibi (Kancalt)

Armatür Dibi

Armatür Dibi (Vidalı)

Aplik Dibi (Kancalt)

1950 - 1951 Dibi (Vidalı)

Aplik Dibi (Vidalı)

..... Plaffonier & Wall Sconces Encastrable



EFECAM SAN. İTH. İHR. ve TİC. LTD. ŞTİ.

Karadeniz Mah. Cebeci Cad. No:161 34250 Küçükköy G.O.Paşa - İST / TURKEY
Tel: (+90212) 618 01 38 - 479 51 51 Fax: (+90212) 477 27 88

www.efecam.com.tr www.efeglass.com
info@efecam.com.tr export@efecam.com.tr