

e fe
glass



2014

INDEX

Opal Camlar

Opal Glass

Page : 04 - 23



El Dekorasyonlu Üfleme Camlar

Blown Glass With Hand Decoration

Page : 26 - 51



Transparan Boyalı Üfleme Camlar

Transparent Painted Blown Glass

Page : 53 - 57



Endüstriyel Otomasyon Camlar

Industrial Automation Glass

Page : 60 - 97



Armatür Camları

Plaffonier Glass

Page : 100 - 107



El Yapımı Camlar

Handwork Glass

Page : 108

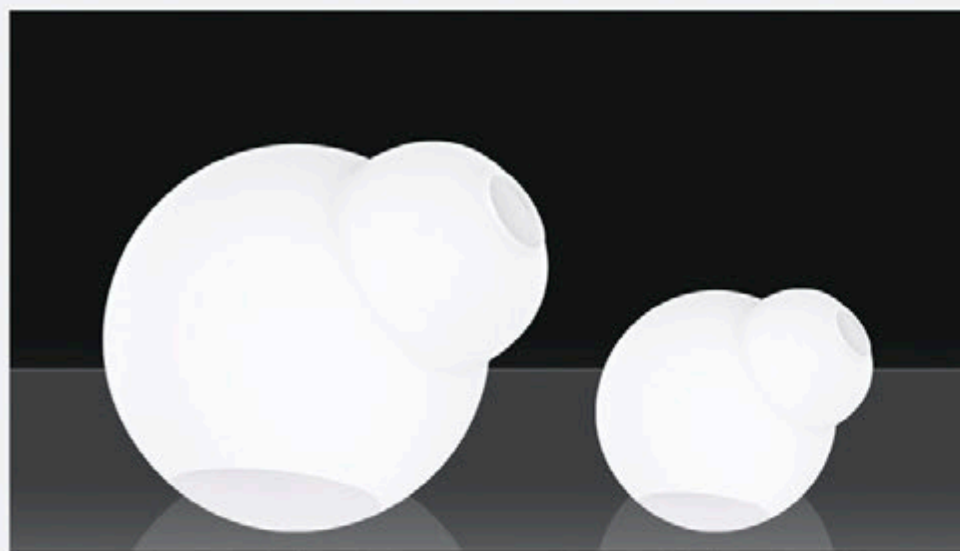


e fe
glass



Opal Camlar

Opal Glass



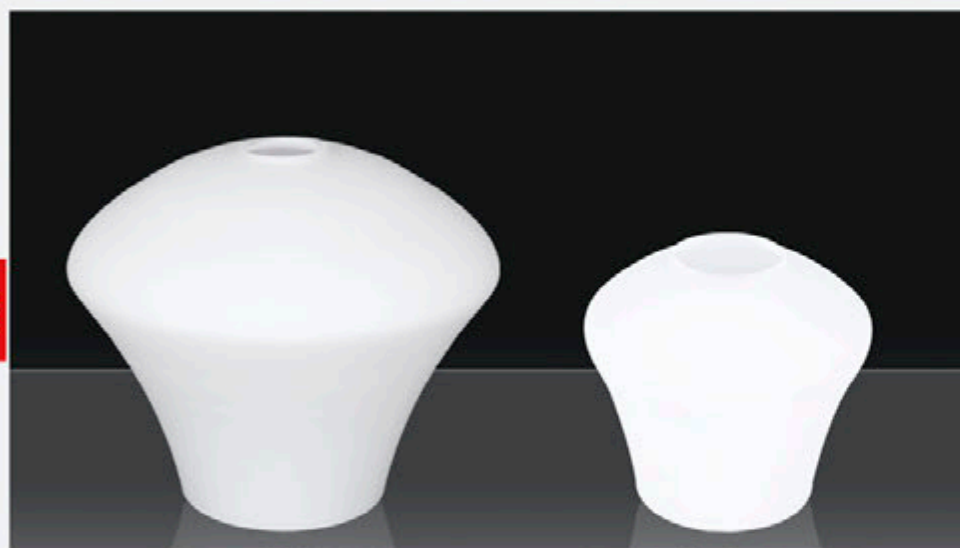
2056 A - Opal h:27 - Ø:19

2056 B - Opal h:17 - Ø:12(E27)



2045-A Opal h:20 - Ø:20

2045-B Opal h:11 - Ø:13



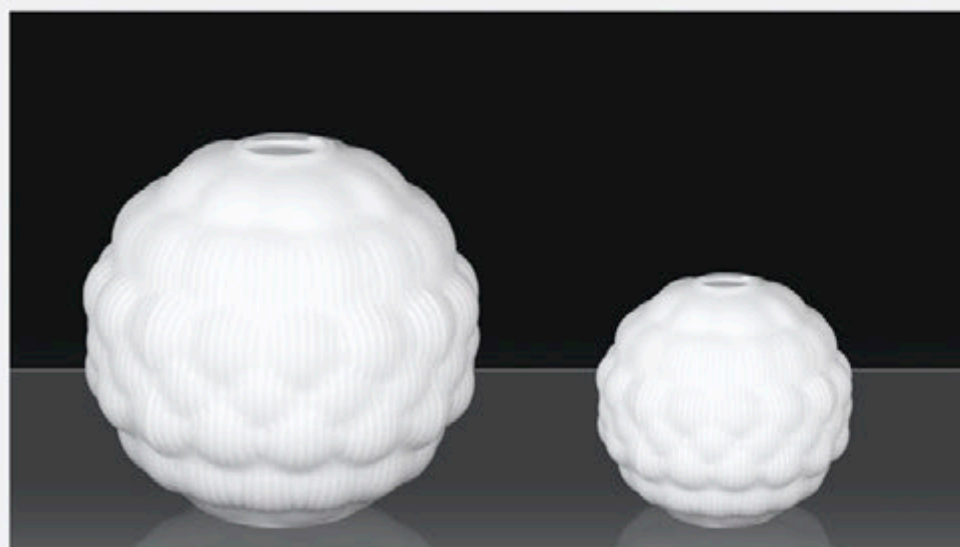
2036-A Opal h:20 - Ø:24

2036-B Opal h:13 - Ø:13(E27)



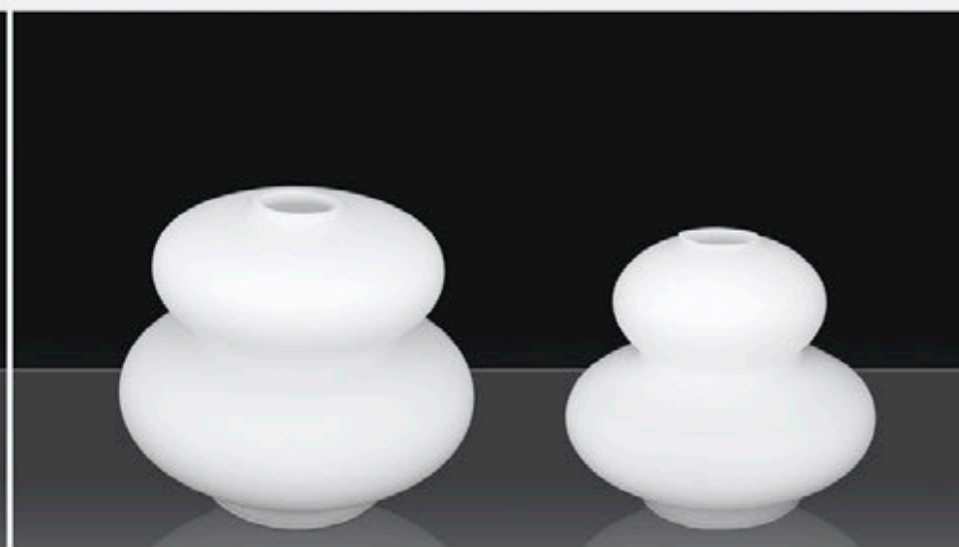
2044-A Opal h:20 - Ø:24

2044-B Opal h:15 - Ø:17(E27)



2035-A Opal h:20 - Ø:21

2035-B Opal h:13 - Ø:15(E27)



2042-A Opal h:15 - Ø:23

2042-B Opal h:14 - Ø:21



2046-A Opal h:20 - Ø:20



2046-B Opal h:12 - Ø:14 (E27)



2012 A Opal h:21 - Ø:17



2012 B Opal h:13 - Ø:12 (E-27)



2013 Opal h:21 - Ø:20



2013-B Opal h:11 - Ø:14(E27)



1111 Opal h:30 - Ø:30
1111 A Opal h:20 - Ø:20



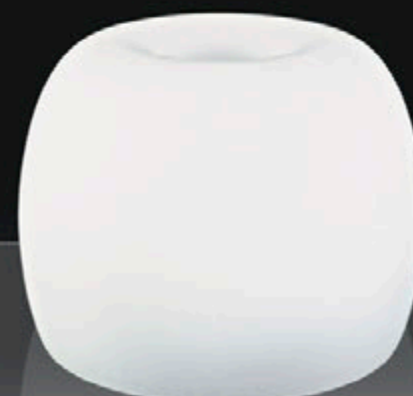
1111 B Opal h:13 - Ø:13(E27)
1111 C Opal h:10 - Ø:10(E14)



1933 Opal h:18 - Ø:35
1933 A Opal h:15 - Ø:30
1933 B Opal h:12 - Ø:25



1933 C Opal h:12 - Ø:19



1914 Opal h:19 - Ø:24



1914-A Opal h:15 - Ø:17



1942 Opal h:25 - Ø:35
1942 A Opal h:22 - Ø:30



1942 B Opal h:20 - Ø:25



1936 Opal h:23 - Ø:31
1936 A Opal h:18 - Ø:24



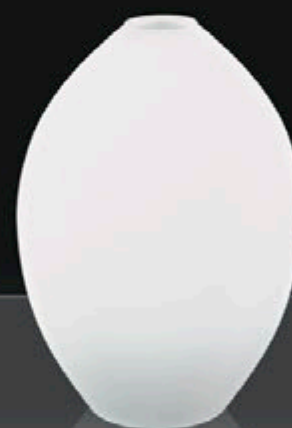
1936 C Opal h:11 - Ø:14(E27)



1916 Opal h:26 - Ø:35
1916 A Opal h:22 - Ø:30



1916 B Opal h:18 - Ø:25



116 - Opal h:30 - Ø:23
116 - A Opal h:26 - Ø:19



116 B Opal h:10 - Ø:8(E27)
1116 C Opal h:10 - Ø:9(E14)
116 C Opal h:13 - Ø:12(E27)



1973 Opal h:20 - Ø:30
1973 A Opal h:20 - Ø:30



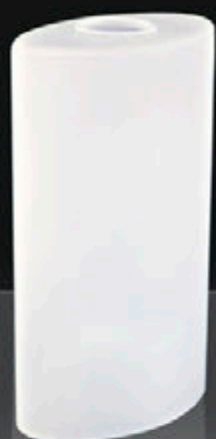
1973 B Opal h:10 - Ø:14(E27)



123 A Opal h:19 - Ø:20



123 B Opal h:12 - Ø:13(E27)



2007 Opal h:30 - Ø:10-15 (E27)



2007 A Opal h:16 - Ø:10-15 (E27)



444 Opal h:23 - Ø:15
444 A Opal h:20 - Ø:11
444 B Opal h:18 - Ø:9



444 C Opal h:10 - Ø:9 (E14)-(E27)
444 D Opal h:12 - Ø:9 (E27)



1120 Opal h:30 - Ø:16



120 Opal h:25 - Ø:13



1906 A Opal h:33 - Ø:19
1906 B Opal h:32 - Ø:15



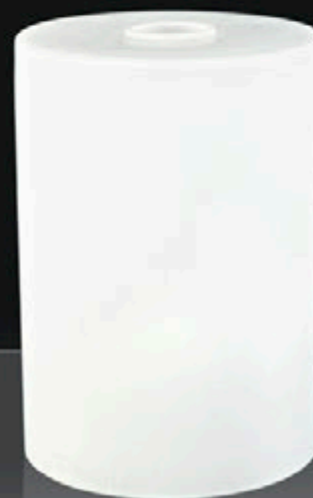
1906 C Opal h:16 - Ø:10 (E27)



2008 Opal h:31 - Ø:21



2008 A Opal h:25 - Ø:15



333 Opal h:29 - Ø:24
333 A Opal h:29 - Ø:19
333 B Opal h:29 - Ø:14



333 C Opal h:29 - Ø:10
333 E Opal h:15 - Ø:10
333 D Opal h:10 - Ø:10 (E14)



113 Opal h:17- Ø:32
113-A Opal h:14- Ø:22



113-C Opal h:10- Ø:11 (E-14)



122 Opal h:20- Ø:25



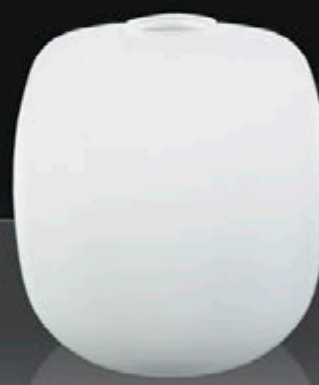
122-B Opal h:12- Ø:15(E-14)



117 Opal h:18- Ø:32
117-A Opal h:17- Ø:25



117-B Opal h:14- Ø:14 (E-27)



1921 Opal h:18 - Ø:17



1921 B Opal h:13 - Ø:11



1117 A Opal h:20 - Ø:20



1117 B Opal h:15 - Ø:13(E27)



446 A Opal h:22 - Ø:19



446 B Opal h:16 - Ø:14



121 Opal h:28 - Ø:14

121 A Opal h:16 - Ø:10



efe
glass

1972 Opal h:25 - Ø:20

1972 A Opal h:14 - Ø:14 (E27)



2080 Opal h:32 - Ø:22-13

2080-A Opal h:16 - Ø:15-10



3333 Opal h:50 - Ø:24
3333-A Opal h:28 - Ø:19
3333-C Opal h:28 - Ø:10

3333-B Opal h:28 - Ø:14



2021-Opal h:31 - Ø:21
2021-A Opal h:25 - Ø:15



1121 Opal h:29 - Ø:13



2062 A Opal h:27 - Ø:17



2047 A Opal h:18 - Ø:12



2011 A Opal h:18- Ø:18
2011 B Opal h:9- Ø:14 (E27)



2011 C Opal h:10- Ø:14 (E14)
2011 D Opal h:10- Ø:11 (E14)



1974 B Opal h:29- Ø:14



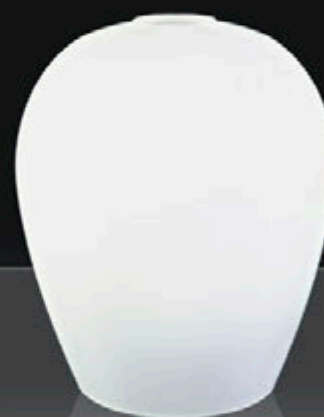
1974 E Opal h:15- Ø:10 (E27)



048 Big Opal h:24 - Ø:17
048 Opal h:20 - Ø:14
048-A Opal h:18 - Ø:12



048 B Opal h:13 - Ø:11(E27)



110 Opal h:25 - Ø:23



110 A Opal h:13 - Ø:14 (E27)



1934 Opal h:30 - Ø:27



1934 A Opal h:22 - Ø:17



1934 B Opal h:14 - Ø:12 (E27)
1934 C Opal h:11 - Ø:9 (E14)



1934 D Opal h:13 - Ø:12 (E27)



1909 Opal h:30 - Ø:30
1909 A Opal h:20 - Ø:30



1909 B Opal h:13 - Ø:13 (E27)
1909 C Opal h:10 - Ø:10 (E14)



2024 A Opal h:18 - Ø:22



2024 B Opal h:10 - Ø:15



2029 Opal h:22 - Ø:15



2029 B Opal h:9 - Ø:12 (E27)



118 Opal h:30 - Ø:23
118 A Opal h:26 - Ø:19



118 B Opal h:11 - Ø:14 (E14)



2009 Opal h:18 - Ø:19



2009 A Opal h:10 - Ø:12 (E27)
2009 B Opal h:10 - Ø:10 (E14)



2031 B Opal h:13 - Ø:16



2031 C Opal h:13 - Ø:11



2038 A Opal h:26- Ø:14



2030 Opal h:22- Ø:16-11



2052 Opal h:19 - Ø:19



2043 A Opal h:23- Ø:15



2040 A Opal h:22- Ø:20



2027 Opal h:29- Ø:17



029 Opal. h:23 - Ø:11 (E-14)



2006 Opal h:27 - Ø:10-20



2050 Opal h:18 - Ø:25



2051 Opal h:19 - Ø:23



2034 A Opal h:22- Ø:17



2023 Opal h:31- Ø:24



2016 A Opal h:20 - Ø:12



1124-A Opal h:22 - Ø:20



023 Opal h:17 - Ø:11



334 B Opal h:16 - Ø:14 (E27)



2039 B Opal h:13 - Ø:14 (E27)



1935 C Opal h:15 - Ø:12 (E27)



2080 D Opal h:13 - Ø:13 (E27)



110 C Opal h:12 - Ø:10 (E27)



305 Y Opal h:13 - Ø:9 (E14)



119 Y Opal h:11 - Ø:9 (E14)



119 D Opal h:10 - Ø:8 (E14)



2033 B Opal h:12 - Ø:14 (E27)



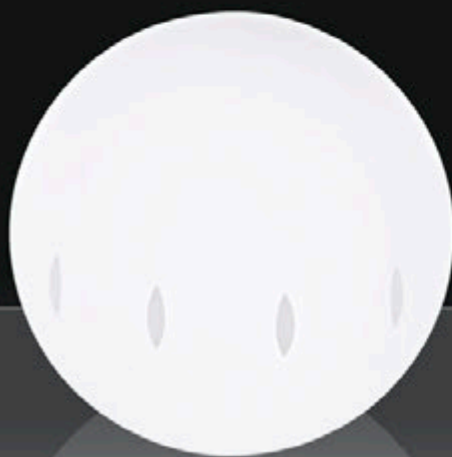
1911 A-DK Opal Tekli
1911 B-DK Opal Tekli
1911 C-DK Opal Tekli



1973 DK Opal Tekli
1973 A-DK Opal Tekli



1914 DK Opal Tekli



1911 A-DK Opal h:30 - Ø:30
1911 B-DK Opal h:25 - Ø:25
1911 C-DK Opal h:20 - Ø:20



1973 DK Opal h:20 - Ø:30
1973 A-DK Opal h:17 - Ø:25



1914 DK Opal h:19 - Ø:24



117 DK Opal Tekli
117 A-DK Opal Tekli



2055 YK Opal Tekli



117 DK Opal h:18 - Ø:32
117 A-DK Opal h:17 - Ø:25



2055 DK Opal h:19 - Ø:24



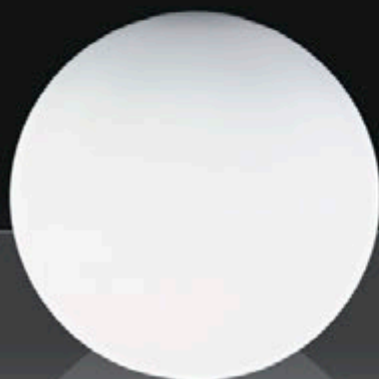
1911 Opal- Big h:40- Ø:40
 1911 Opal h:35- Ø:35
 1911-A Opal h:30- Ø:30
 1911-B Opal h:25- Ø:25
 1911-C Opal h:20- Ø:20
 1911-Z Opal h:18- Ø:18
 1911-D Opal h:15- Ø:15
 1911-M Opal h:13- Ø:13
 1911-E Opal h:10- Ø:10
 1911-F Opal h: 8- Ø:8
 1911-G Opal h: 6- Ø:6 (G-9)



1910 Opal- Big h:40- Ø:40
 1910 Opal h:35- Ø:35
 1910-A Opal h:30- Ø:30
 1910-B Opal h:25- Ø:25
 1910-C Opal h:20- Ø:20
 1910-D Opal h:15- Ø:18
 1910-E Opal h:12- Ø:14 (E-27)
 1910-F Opal h:10- Ø:11 (E-14)
 1910-G Opal h: 7- Ø:8 (E-14)
 1910-H Opal h: 6- Ø:7 (G4-G9)



1940 Opal h:37 - Ø:29
 1940 A Opal h:30 - Ø:28
 1940 B Opal h:22 - Ø:17





2037 Opal Tekli
2037 A Opal Tekli



1900 Opal Tekli
1900 A Opal Tekli
1900 B Opal Tekli



2018 Opal Tekli
2018 A Opal Tekli



2037 Opal h:31 - Ø:32
2037 A Opal h:21 - Ø:22



1900 Opal h:19 - Ø:35
1900 A Opal h:17 - Ø:30
1900 B Opal h:13 - Ø:25



2018 Opal h:14 - Ø:43
2018 A Opal h:13 - Ø:30



2222 Opal Tekli
2222 A Opal Tekli



2054 Opal Tekli



2049 A Opal Tekli
2049 B Opal Tekli
2049 D Opal Tekli



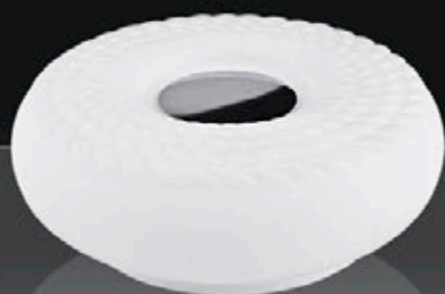
2222 Opal h:28 - Ø:40
2222 A Opal h:24 - Ø:30



2054 Opal h:28 - Ø:31



2049 A Opal h:30 - Ø:30
2049 B Opal h:20 - Ø:20
2049 D Opal h:15 - Ø:15



2063 Opal h:25 - Ø:25



4444 C Opal h:8- Ø:8 (E14)



4444 C Opal Küp h:8- Ø:8 (E14)



033 C Opal h:7- Ø:10 (E14)



2053 B Opal h:10 - Ø:14 (E27)



300 Opal h:15- Ø:10(E-14)



2026- A-Opal h:24- Ø:10x10



180 Opal h:10 - Ø:14 (E-14)



2064 Opal h:12 - Ø:14 (E27)



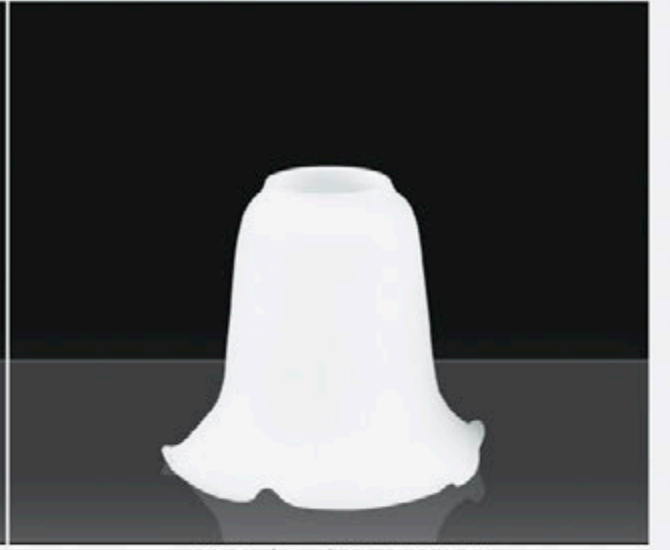
202 C Opal h:7 - Ø:11 (E-14)



164 A Opal h:14- Ø:21 (E27)



1043 Opal h:10 - Ø:10 (E-27)



170 Opal h:13 - Ø:13 (E-27)



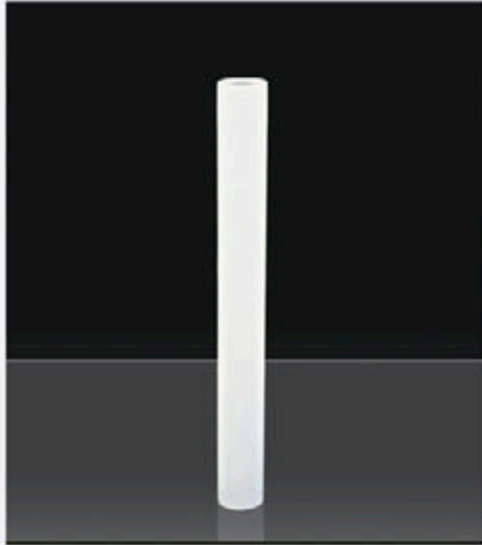
113-A-Y- Opal h:14- Ø:22



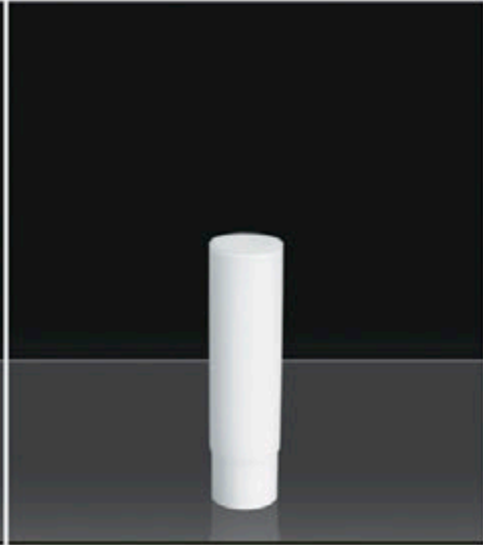
025 Opal h:28 - Ø:9



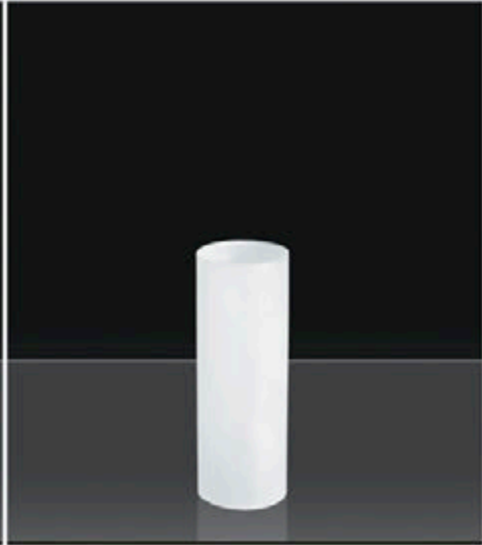
024 Opal h:18 - Ø:8



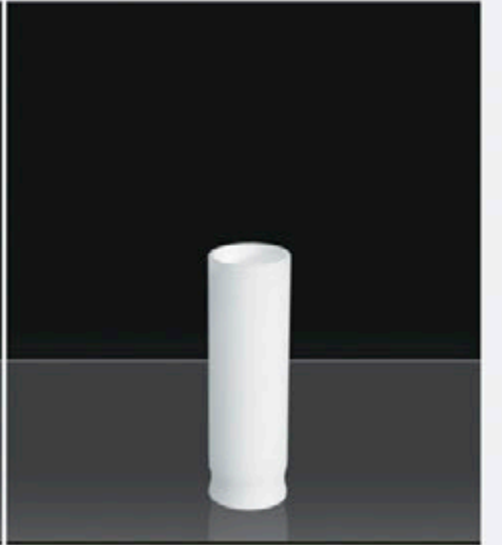
333-033 Opal h:40 - Ø:6



011 Opal h:17 - Ø:4 (E14)
(Ağız Kapalı)



012 Opal h:16 - Ø:5 (E14)



010 Opal h:16 - Ø:4 (E14)



1950 Opal h:55 - Ø:6
 1950-A Opal h:40 - Ø:6
 1950-B Opal h:30 - Ø:6



1951 Opal h:55 - Ø:9 (E14)
 1951-A Opal h:40 - Ø:9 (E14)
 1951-B Opal h:30 - Ø:9 (E14)



1960 Opal h:55 - Ø:11 (E14)
 1960-A Opal h:40 - Ø:11 (E14)
 1960-B Opal h:30 - Ø:11 (E14)



203- Opal h: 12 - Ø:26



1955 Opal h: 6 - Ø:24
1955-A Opal h: 6 - Ø:21
1955-B Opal h: 6 - Ø:15



1958 Opal h:10 - Ø:35
1958-A Opal h:9 - Ø:30
1958-B Opal h:8 - Ø:25



201 Opal h:10 - Ø:28
201-A Opal h: 9 - Ø:24



2041 Opal h:14 - Ø:32
2041 A Opal h:9 - Ø:23



1954 Opal h: 9 - Ø:35
1954-A Opal h: 8 - Ø:30
1954-B Opal h: 8 - Ø:25



202 Opal h:10 - Ø:28
202-A Opal h: 9 - Ø:24



202-2 Opal h: 9 - Ø:24 -12

e fe
glass



www.efecam.com.tr
www.efeglass.com

El Dekorasyonlu Üfleme Cam

Blown Glass With Hand Decoration

Renk

Siyah - Bal - Kırmızı - Mavi - Yeşil - Şeffaf - Pembe - Lila

Opak : Siyah - Yeşil - Lila - Pembe - Mavi - Kırmızı

Color

Black - Honey - Red - Blue - Green - Clear - Pink - Lilac

Opaque : Black - Green - Lilac - Pink - Blue - Red



2049 O-F h:30 - Ø:30
2049 A-O-F h:20 - Ø:20



2049 B-O-F h:12 - Ø:14



2061 A-O-F



h:21 - Ø:24



2046 O-F h:30 - Ø:30
2046 A-O-F h:20 - Ø:20



2046 B-O-F h:12 - Ø:14



2046 O-FS h:30 - Ø:30
2046 A-O-FS h:20 - Ø:20



2046 B-O-FS h:12 - Ø:14



333 A-5-41 h:29 - Ø:19
333 B-5-41 h:29 - Ø:14



333 C-5-41 h:29 - Ø:10



1921-5-41 h: 18 - Ø:17
1921 A-5-41 h: 12 - Ø:13



1933-A - 5 -41 h:15 - Ø:30
1933-B - 5 -41 h:12 - Ø:25
1933-C - 5 -41 h:12 - Ø:19



116-61 SY h:30 - Ø:23

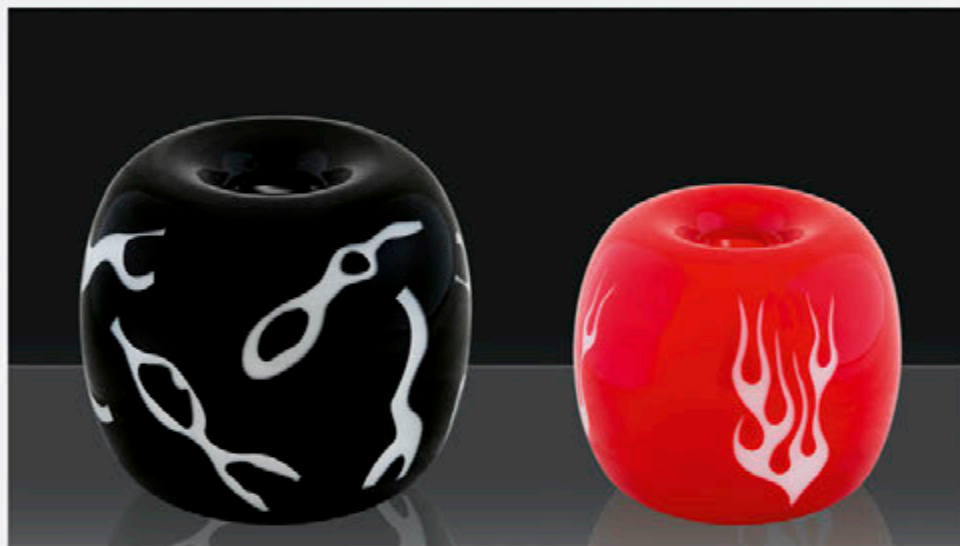


116-A-61 SY h:26 - Ø:19



444 A-KR h:20 - Ø:11

444 B-KR h:18 - Ø:9



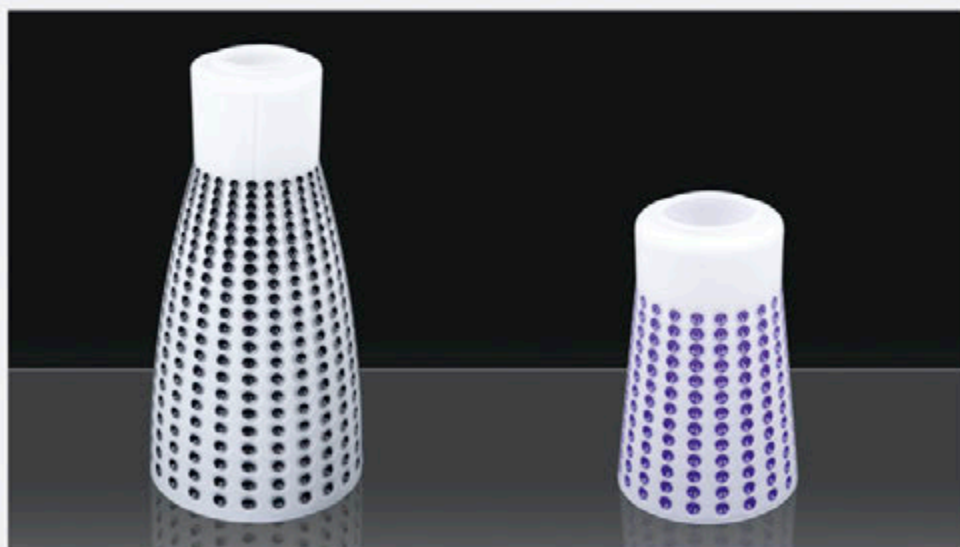
1914-61-26 h:19 - Ø:24

1914-61-Alev h:19 - Ø:24



2013 - 5 - 61 h:21 - Ø:20

2013-B- 5 - 61 h:11 - Ø:14(E27)



121 O-S h:28 - Ø:14

121 A-O-S h:16 - Ø:10(E27)



2012 A-61-S h:21 - Ø:17(E27)

2012 B-61-S h:13 - Ø:12(E27)



1972- 5 - 61 h:25 - Ø:20
1972-A-5 - 61 h:14 - Ø:14 (E27)



120-61-26 h:25 - Ø:13



1914-5-61-ÇM h:19 - Ø:24



1910 B-ÇD-20 h:25 - Ø:25
1910 C-ÇD-20 h:20 - Ø:20



1910 B-ÇD-21 h:25 - Ø:25
1910 C-ÇD-21 h:20 - Ø:20



2040 A-5 h:22 - Ø:20



1933- 01-02 h:18 - Ø:35
1933-A-01-02 h:15 - Ø:30



1936- 01 h:23 - Ø:31
1936-A-01 h:18 - Ø:24



1942- A-0-1 h:22 - Ø:30
1942- B-0-1 h:20 - Ø:25



1942 - 5-3-61 h:25 - Ø:35



1942 - 5-3-61 h:25 - Ø:35



1942 A - 5-3-61 h:22 - Ø:30



1914 - 61 h:19 - Ø:24



1914 A - 61 h:15 - Ø:17



1914 A - 61 h:15 - Ø:17



1910 C-5-Y h:20 - Ø:20
1910 D-5-Y h:15 - Ø:18



1921-61 h:18 - Ø:17
1921A-61 h:12 - Ø:13



2024 A-61 h:18 - Ø:22
2024 B-61 h:10 - Ø:15



333 A-T-3 h:29 - Ø:19
333 B-T-3 h:29 - Ø:14



333 A-T-2 h:29 - Ø:19
333 B-T-2 h:29 - Ø:14



333 A-T-1 h:29 - Ø:19
333 B-T-1 h:29 - Ø:14



1933 T-1 h:18 - Ø:35
1933 A-T-1 h:15 - Ø:30



1933 TV-1 h:18 - Ø:35
1933 A-TV-1 h:15 - Ø:30



1933 T-2 h:18 - Ø:35
1933 A-T-2 h:15 - Ø:30



1921-CD-1 h:18 - Ø:17



1921-CD-2 h:18 - Ø:17



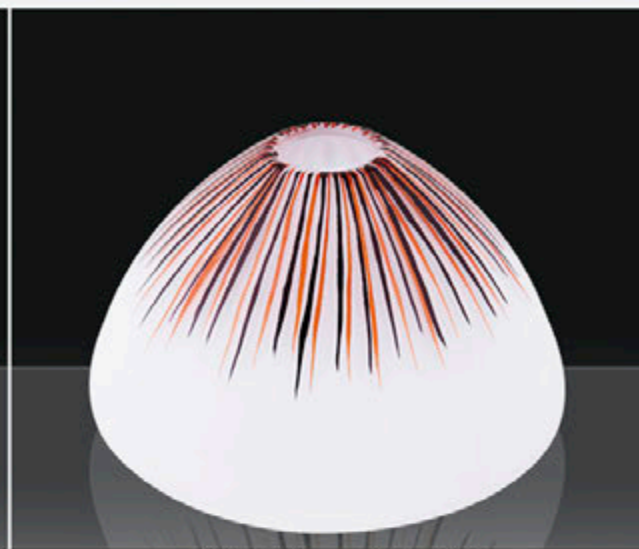
1921-CD-3 h:18 - Ø:17



1936 -FD-1 h:23 - Ø:31
1936 A-FD-1 h:18 - Ø:24



1936 -FD-2 h:23 - Ø:31
1936 A-FD-2 h:18 - Ø:24



1936 -FD-3 h:23 - Ø:31
1936 A-FD-3 h:18 - Ø:24



1914 -31-PS h:19 - Ø:24



1910 B-31-PS h:25 - Ø:25
1910 C-31-PS h:20 - Ø:20



1921-31-PS h:18 - Ø:17



1910 C-PS h:20 - Ø:20
1910 E-PS h:12 - Ø:14 (E27)



1914 - PS h:19 - Ø:24
1914 A - PS h:15 - Ø:17



116 A-PS h:26 - Ø:19



120 CD-4 h:25 - Ø:13



120 CD-5 h:25 - Ø:13



116 A- CD-6 h:26 - Ø:19



120 SD-1 h:25 - Ø:13



120 SD-2 h:25 - Ø:13



1921 SD-3 h:18 - Ø:17



333 B - SD-4 h:29 - Ø:14

333 C - SD-4 h:29 - Ø:10



333 B - CD-7 h:29 - Ø:14

333 C - CD-7 h:29 - Ø:10



333 B - CD-8 h:29 - Ø:14

333 C - CD-8 h:29 - Ø:10



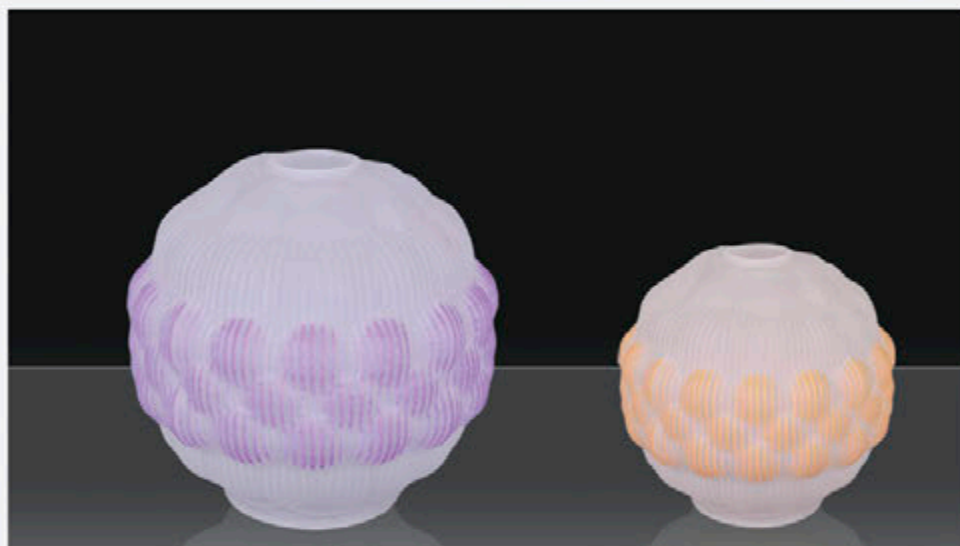
2043 A-OYP h:23 - Ø:16



446 A-YP h:22 - Ø:19

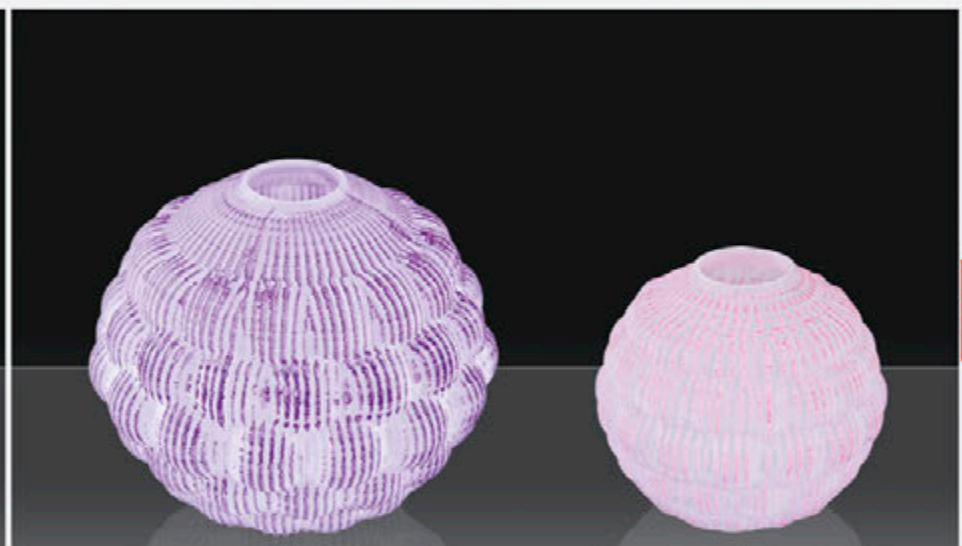


120 OYP h:25 - Ø:13



2035 A-O-FS h:20 - Ø:21

2035 B-O-FS h:13 - Ø:15 (E27)

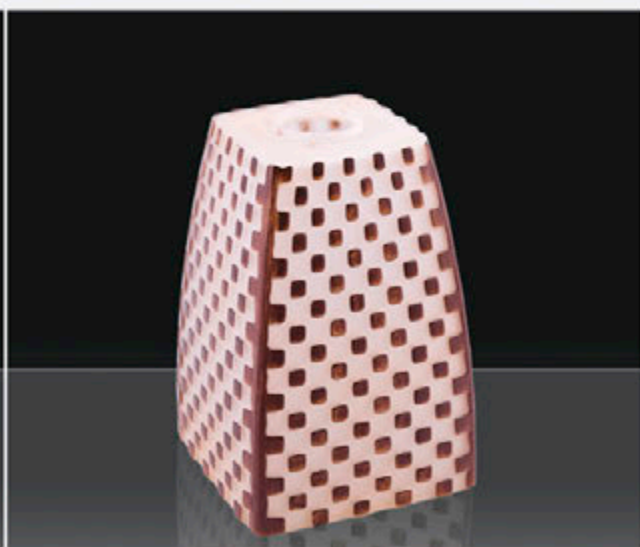


2035 A-FS h:20 - Ø:21

2035 B-FS h:13 - Ø:15 (E27)



2038 A-1 FS h:27 - Ø:14



2029 - MS h:22 - Ø:15
2029 B - MS h:9 - Ø:12 (E27)



1914 - OYP h:19 - Ø:24



1934 A-10-3 h:22 - Ø:17
1934 B-10-3 h:14 - Ø:12



2032 A-10-3 h:21 - Ø:18

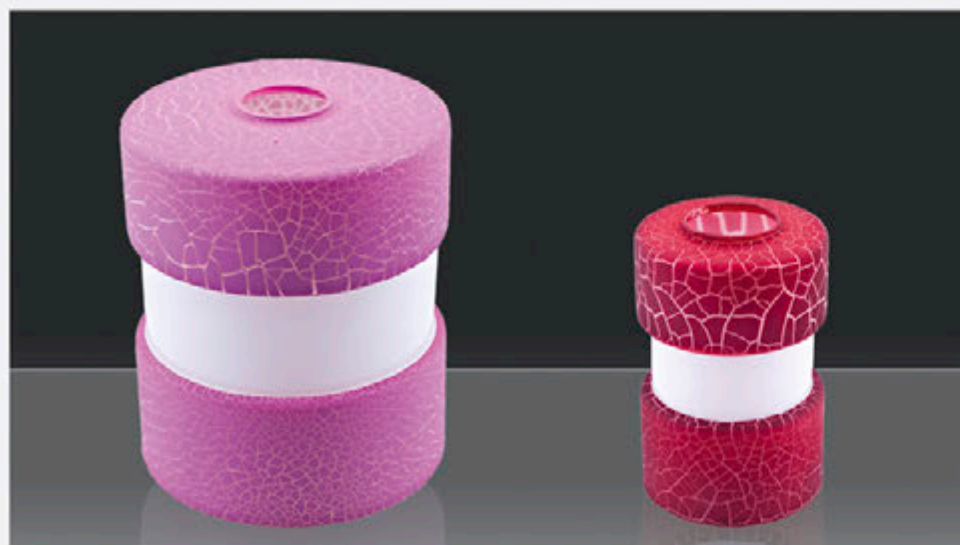


1921 -10 h:18 - Ø:17



1911 C-10 h:20 - Ø:20
1911 D-10 h:15 - Ø:15

1911 C-10 h:20 - Ø:20
1911 D-10 h:15 - Ø:15



2024 A-10 - 2 h:18 - Ø:22

2024 B-10 - 2 h:10 - Ø:15(E27)



2024 A-10 - 1 h:18 - Ø:22

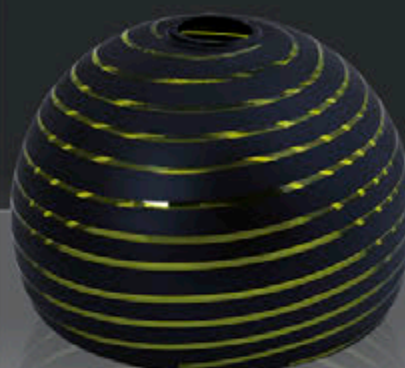
2024 B-10 - 1 h:10 - Ø:15 (E27)



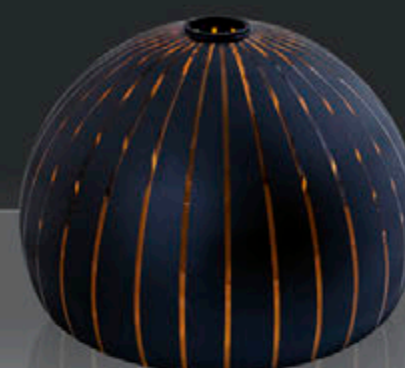
1111-5-1 h:30 - Ø:30
1111-A-5-1 h:20 - Ø:20
1111-B-5-1 h:13 - Ø:13 (E27)



1111-5-50 h:30 - Ø:30
1111-A-5-50 h:20 - Ø:20
1111-B-5-50 h:13 - Ø:13 (E27)



1916-5-53 h:26 - Ø:35
1916-A-5-53 h:22 - Ø:30



1916-5-50 h:26 - Ø:35
1916-A-5-50 h:22 - Ø:30



1934-5-52 h:30 - Ø:27
1934-A-5-52 h:22 - Ø:17



1934-B-5-53 h:14 - Ø:12 (E27)



1934-5-53 h:30 - Ø:27
1934-A-5-53 h:22 - Ø:17



1934-B-5-52 h:14 - Ø:12 (E27)



1936-5-50 h:23 - Ø:31
1936-A-5-50 h:18 - Ø:24



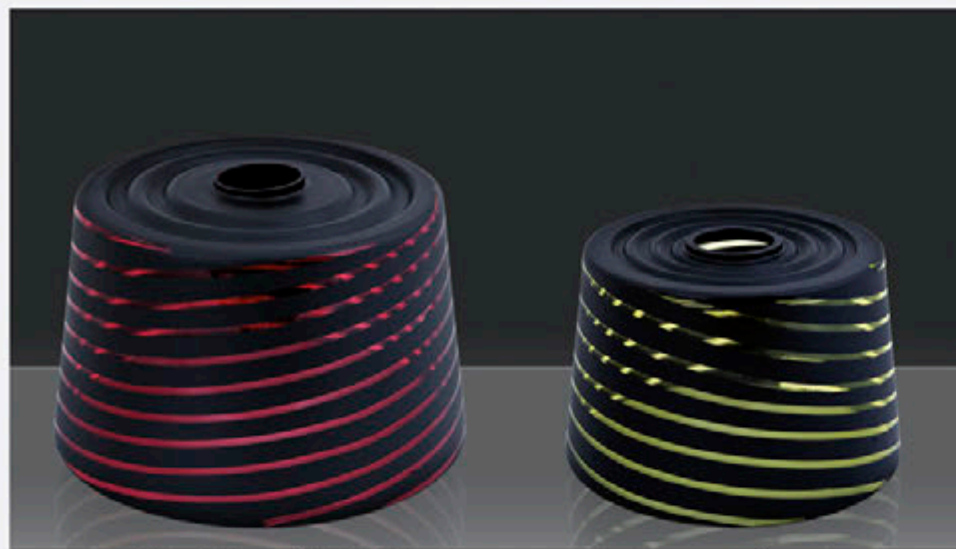
1936-5-S-11 h:23 - Ø:31
1936-A-5-S-11 h:18 - Ø:24



1916-5-1 h:26 - Ø:35
1916-A-5-1 h:22 - Ø:30

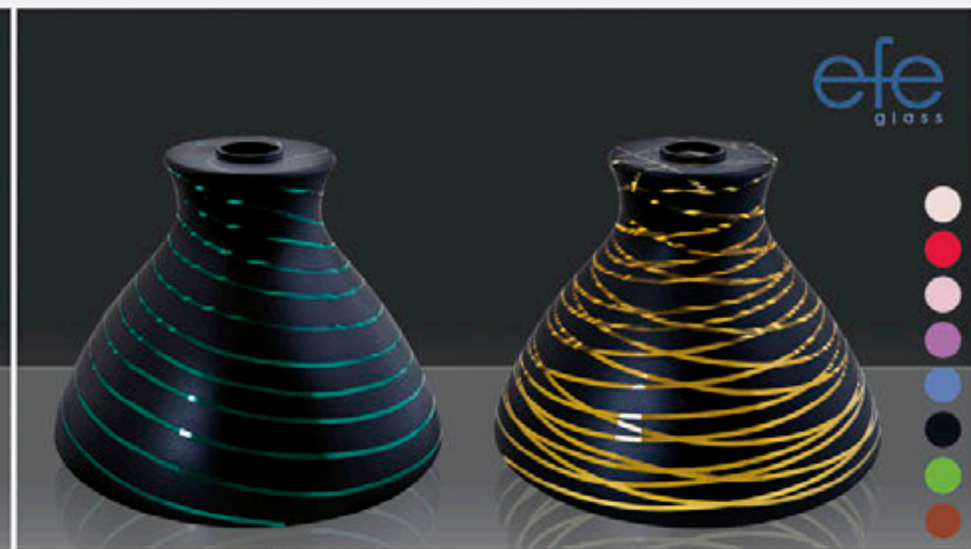


1916-5-1 h:26 - Ø:35
1916-A-5-1 h:22 - Ø:30



1933-A-5-53 h:18 - Ø:35

1933-B-5-53 h:12 - Ø:25



efe
glass

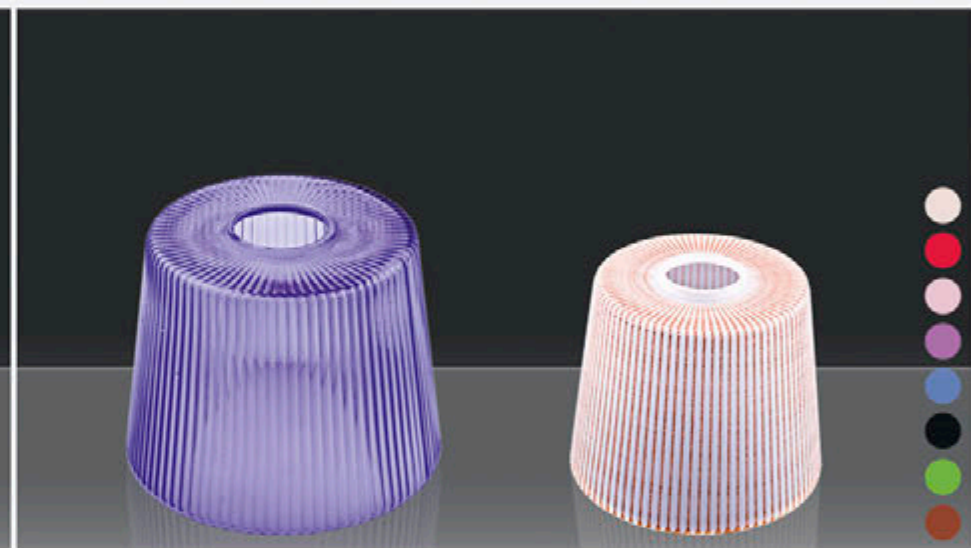
1942-5-53 h:25 - Ø:35

1942 A-5-52 h:22 - Ø:30



2030 A-TS h: 22 - Ø:16x11

2030 A-MS h: 22 - Ø:16x11



2031 B-TS h:13 - Ø:16

2031 C-TS h:13 - Ø:11

2031 B-FS h:13 - Ø:16

2031 C-FS h:13 - Ø:11



2029-TS h:22 - Ø:15 (E27)

2029-B-TS h: 9 - Ø:12 (E27)



121 - 5 - S h:28 - Ø:14

121 A - 5 - S h:16 - Ø:10(E27)



1910-A-5-PT h:30 - Ø:30
1910-B-5-PT h:25 - Ø:25
1910-C-5-PT h:20 - Ø:20



1910-A-5-PT h:30 - Ø:30
1910-B-5-PT h:25 - Ø:25
1910-C-5-PT h:20 - Ø:20



1910-A-5-PD h:30 - Ø:30
1910-B-5-PD h:25 - Ø:25
1910-C-5-PD h:20 - Ø:20



1910-A-5-KD h:30 - Ø:30
1910-B-5-KD h:25 - Ø:25
1910-C-5-KD h:20 - Ø:20



1910-A-5-ÇM h:30 - Ø:30
1910-B-5-ÇM h:25 - Ø:25
1910-C-5-ÇM h:20 - Ø:20



1910-A-5-UD h:30 - Ø:30
1910-B-5-UD h:25 - Ø:25
1910-C-5-UD h:20 - Ø:20



1910-A-5-26 h:30 - Ø:30
1910-B-5-26 h:25 - Ø:25
1910-C-5-26 h:20 - Ø:20
1910-D-5-26 h:15 - Ø:18
1910-E-5-26 h:12 - Ø:14(E27)



1910-A-5 Su Yolu h:30 - Ø:30
1910-B-5 Su Yolu h:25 - Ø:25
1910-C-5 Su Yolu h:20 - Ø:20
1910-D-5 Su Yolu h:15 - Ø:18
1910-E-5 Su Yolu h:12 - Ø:14(E27)



1910-A-5-29 h:30 - Ø:30
1910-B-5-29 h:25 - Ø:25
1910-C-5-29 h:20 - Ø:20
1910-D-5-29 h:15 - Ø:18
1910-E-5-29 h:12 - Ø:14(E27)



1942-5 Su Yolu h:25 - Ø:35
1942-A-5 Su Yolu h:22 - Ø:30



1942-B-5 Su Yolu h:20 - Ø:25



1973-5-31 h:20- Ø:30
1973-A-5-31 h:17- Ø:25



1973-5-26 h:20- Ø:30
1973-A-5-26 h:17- Ø:25



1906 B-5 Suyolu h:32 Ø:15



1906 C-5 Suyolu h:16 Ø:10 (E27)



1909-B-5 Su Yolu h:13 - Ø:13 (E27)
1909-C-5 Su Yolu h:10 - Ø: 9 (E14)



2032-A-5-22 h:21- Ø:18



2032-A-5-39 h:21- Ø:18



1125-5-D h:29 Ø:13



1125-5 h:29 Ø:13



333-B-5-PT h:29- Ø:14
333-C-5-PT h:29- Ø:10



333-E-5-PT h:15- Ø:10(E27)



333-B-5-ÇM h:29- Ø:14
333-C-5-ÇM h:29- Ø:10



333-E-5-ÇM h:15- Ø:10(E27)



333-B-5-DV h:29- Ø:14
333-C-5-DV h:29- Ø:10



333-E-5-DV h:15- Ø:10(E27)



333-B-5-KD h:29- Ø:14
333-C-5-KD h:29- Ø:10



333-E-5-KD h:15- Ø:10(E27)



333-B-5-UD h:29- Ø:14
333-C-5-UD h:29- Ø:10



333-E-5-UD h:15- Ø:10(E27)



333-B-5-Suyolu h:29- Ø:14
333-C-5-Suyolu h:29- Ø:10
333-E-5-Suyolu h:15- Ø:10 (E27)



333-B-5-32 h:29- Ø:14
333-C-5-32 h:29- Ø:10
333-E-5-32 h:15- Ø:10 (E27)



1934 A-5-ÇM h:22 - Ø:17
 1934 B-5-ÇM h:14 - Ø:12
 1934 C-5-ÇM h:11 - Ø:9 (E14)
 1934 D-5-ÇM h:13 - Ø:12 (E27)



1934 A-5-29 h:22 - Ø:17
 1934 B-5-29 h:14 - Ø:12
 1934 C-5-29 h:11 - Ø:9 (E14)
 1934 D-5-29 h:13 - Ø:12 (E27)



1934 A-5-UD h:22 - Ø:17
 1934 B-5-UD h:14 - Ø:12
 1934 C-5-UD h:11 - Ø:9 (E14)
 1934 D-5-UD h:13 - Ø:12 (E27)



1934 A-5-40 h:22 - Ø:17
 1934 B-5-40 h:14 - Ø:12
 1934 C-5-40 h:11 - Ø:9 (E14)
 1934 D-5-40 h:13 - Ø:12 (E27)



1934 A-5-YN h:22 - Ø:17
 1934 B-5-YN h:14 - Ø:12
 1934 C-5-YN h:11 - Ø:9 (E14)
 1934 D-5-YN h:13 - Ø:12 (E27)



1934 A-5-D h:22 - Ø:17
 1934 B-5-D h:14 - Ø:12
 1934 C-5-D h:11 - Ø:9 (E14)
 1934 D-5-D h:13 - Ø:12 (E27)



1934 A-5-KD h:22 - Ø:17
 1934 B-5-KD h:14 - Ø:12
 1934 C-5-KD h:11 - Ø:9 (E14)
 1934 D-5-KD h:13 - Ø:12 (E27)



1934 A-5-PD h:22 - Ø:17
 1934 B-5-PD h:14 - Ø:12
 1934 C-5-PD h:11 - Ø:9 (E14)
 1934 D-5-PD h:13 - Ø:12 (E27)



1934 A-5-08 h:22 - Ø:17
 1934 B-5-08 h:14 - Ø:12
 1934 C-5-08 h:11 - Ø:9 (E14)
 1934 D-5-08 h:13 - Ø:12 (E27)



1921-5-PT h:18 - Ø:17
1921-A-5-PT h:12 - Ø:13
1921-B-5-PT h:14 - Ø:11



1921-5-29-T h:18 - Ø:17
1921-A-5-29-T h:12 - Ø:13
1921-B-5-29-T h:14 - Ø:11



1921-5-Alev h:18 - Ø:17
1921-A-5-Alev h:12 - Ø:13
1921-B-5-Alev h:14 - Ø:11



1921-5 Su Yolu h:18 - Ø:17
1921-A-5 Su Yolu h:12 - Ø:13
1921-B-5 Su Yolu h:14 - Ø:11



116-5 Su Yolu h:30 - Ø:23
116-A-5 Su Yolu h:26 - Ø:19
116-C-5 Su Yolu h:12 - Ø:12(E27)



116-5 ÇM h:30 - Ø:23
116-A-5 ÇM h:26 - Ø:19
116-C-5 ÇM h:12 - Ø:12(E27)



116-5-40 h:30 - Ø:23
116-A-5-40 h:26 - Ø:19
116-C-5-40 h:12 - Ø:12(E27)



116-5 PD h:30 - Ø:23
116-A-5 PD h:26 - Ø:19
116-C-5 PD h:12 - Ø:12(E27)



120-5-PD h:25 - Ø:13



120-5-Su Yolu h:25 - Ø:13



120-5-ÇM h:25 - Ø:13



120-5-29-T h:25 - Ø:13



2013-5 h:21 - Ø:20

2013-B-5 h:11 - Ø:14 (E27)



1111-5 h:30 - Ø:30
1111 A-5 h:20 - Ø:20

1111-B-5 h:13 - Ø:13 (E-27)
1111-C-5 h:10 - Ø:10 (E-14)



2045-A-5 h:18 - Ø:20

2045-B-5 h:11 - Ø:13



2046-A-5 h:20 - Ø:20

2046-B-5 h:12 - Ø:14



1117-A-5 h:20 - Ø:20

1117-B-5 h:15 - Ø:13 (E27)



1933-A-5-26D h:15 - Ø:30
1933-B-5-26D h:12 - Ø:25
1933-C-5-26D h:12 - Ø:19

1933-A-5-45 h:15 - Ø:30
1933-B-5-45 h:12 - Ø:25
1933-C-5-45 h:12 - Ø:19



1972-5 h:25 - Ø: 20
1972 A-5 h:14 - Ø: 14 (E27)

1972-5-AS h:25 - Ø:20
1972-A-5-AS h:14 - Ø:14(E27)



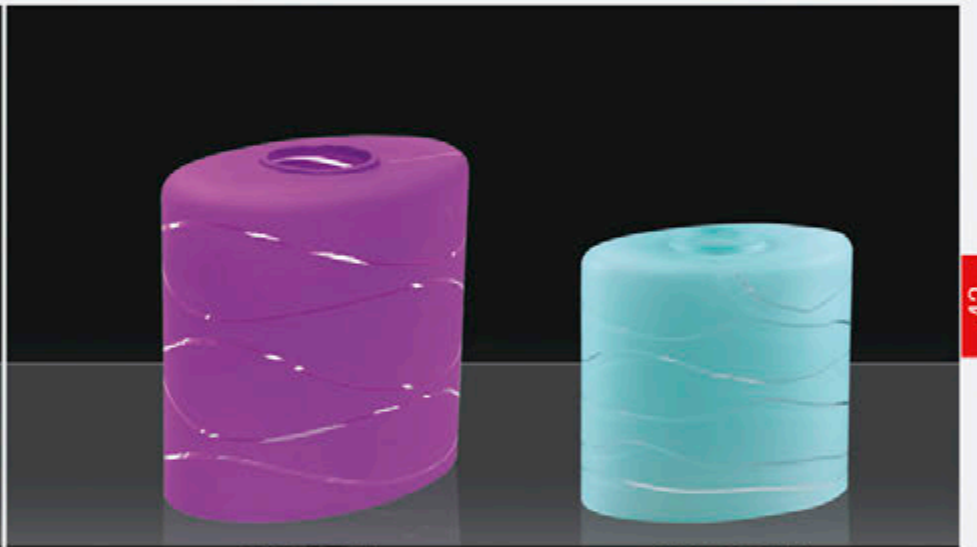
2044-A-5-44 h:20 - Ø:24

2044-B-5-44 h:15 - Ø:17



117-5 Su Yolu h:18 - Ø:32
117-A Su Yolu h:17 - Ø:25

117-B-5 Su Yolu h:14 - Ø:14(E-27)



2007-5 Su Yolu h:30 - Ø: 10 - 15

2007-A-5 Su Yolu h:16 - Ø:15 (E-27)



2024-A-5-42 h:18 - Ø:22

2024-B-5-42 h:10 - Ø:15



1914-5-32 h:19 - Ø:24

1914-C-5 Su Yolu h:12 - Ø:13(E27)



110-5 Su Yolu h:25 - Ø:23
110-A-5 Su Yolu h:13 - Ø:14 (E-27)



2058 B-5 h:12 - Ø:14 (E27)



2025 B-5 h:12 - Ø:14 (E27)



2043-A-5 h:23 - Ø:16



2016 A-5 h:21 - Ø: 12



334-B-5 Su Yolu
h:16 - Ø:14 (E-27)



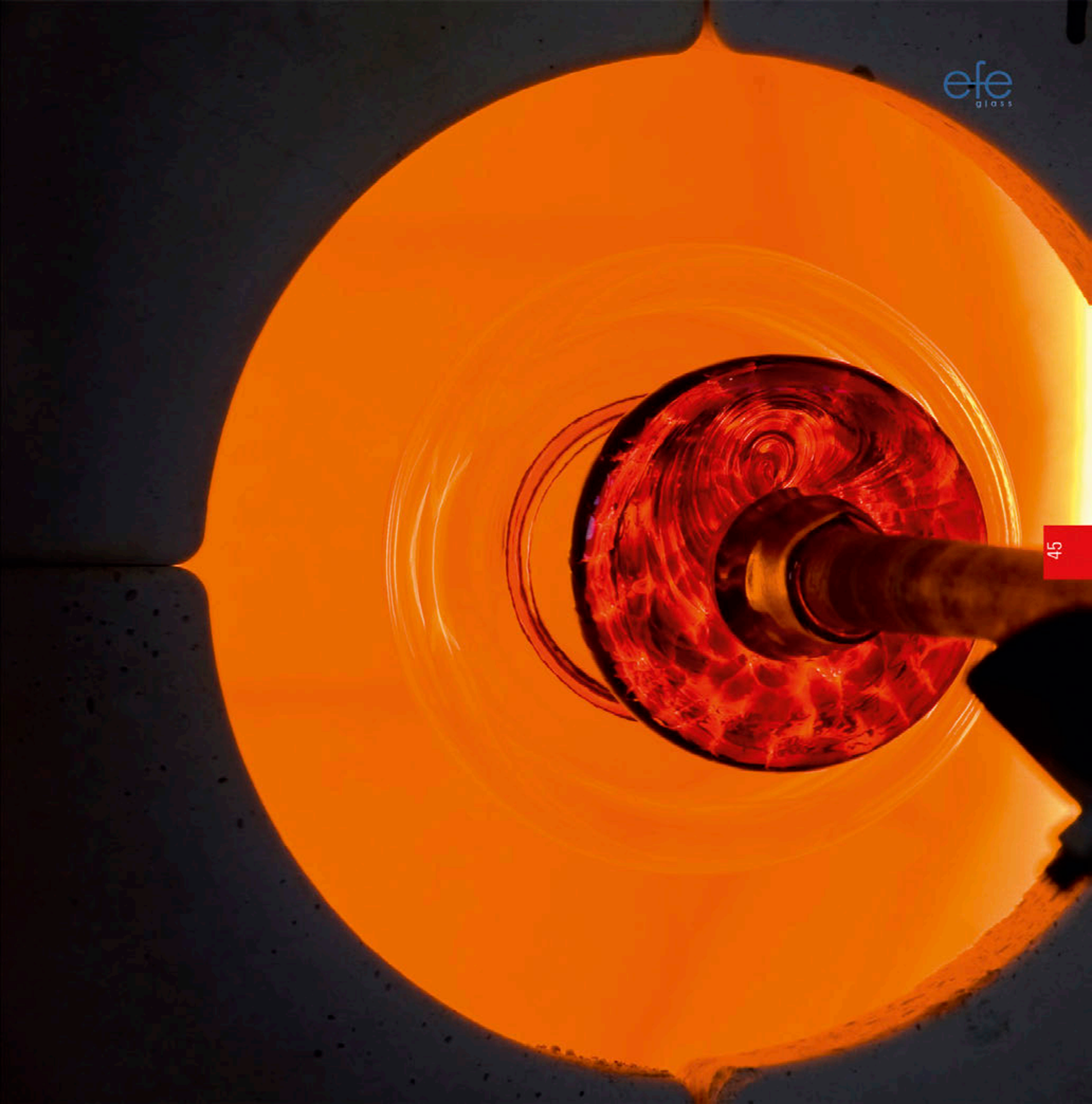
2080 D-5 Su Yolu
h:14 - Ø:13 (E-27)



023-5 Su Yolu
h:18 - Ø:11

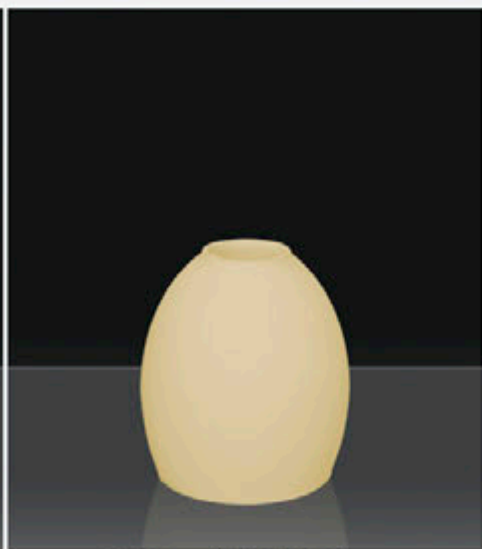


024-5 Su Yolu
h:18 - Ø:8

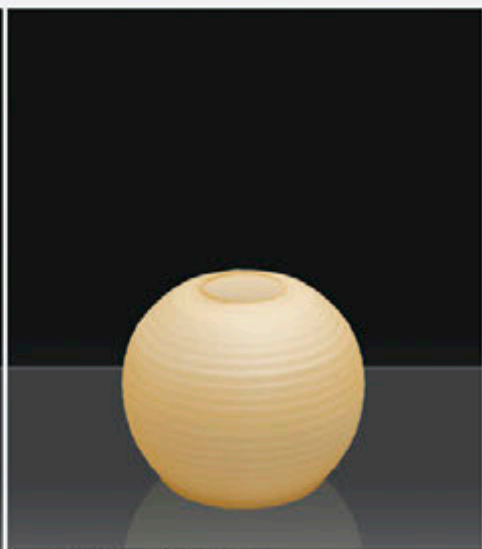




123-A-1 h:19- Ø:20
123-B-1 h:12- Ø:13 (E-14)



116-B-1 h:10- Ø:8 (E-14)
116-C-1 h:13- Ø:12 (E-27)
1116-C-1 h:10- Ø:9 (E-14)



2009 -1 h:18- Ø:19
2009-A-1 h:12- Ø:12 (E-27)
2009-B-1 h:10- Ø:10 (E-14)



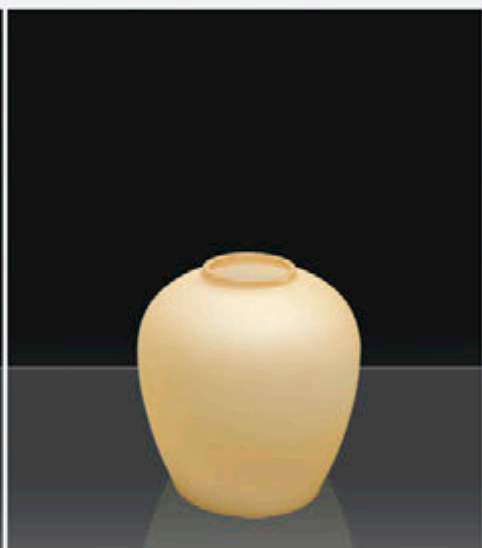
023-1 h:17 - Ø:11



1921-1 h:18- Ø:17
1921-B-1 h:13- Ø:11(E-27)



117-1 h:18- Ø:32
117-A-1 h:17- Ø:25
117-B-1 h:14- Ø:14 (E-27)



110-1 h:25- Ø:23
110-A-1 h:13- Ø:14(E-27)



113-C-1 h:10- Ø:11 (E-14)



2029-1 h:22 - Ø:11(E27)
2029 B-1 h:9 - Ø:7(E27)



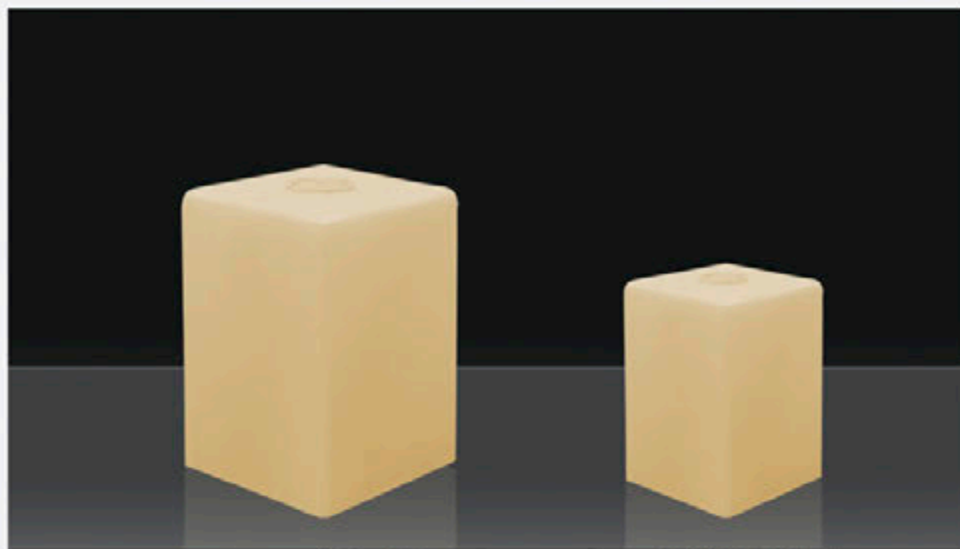
305-Y-1 h:13 - Ø:9 (E-14)



2012-A-1 h:21 - Ø:17
2012-B-1 h:13 - Ø:12(E27)



2030-A-1 h:22 - Ø:16-11



444-1 h:23 - Ø:15
 444-A-1 h:20 - Ø:11
 444-B-1 h:18 - Ø:9 (E-27)



444-C-1 h:10 - Ø:9(E14)
 444-D-1 h:12 - Ø:9(E27)



2007-1 h:30 - Ø:10-15
 2007-A-1 h:16 - Ø:10-15 (E-27)



333-B-1 h:29 - Ø:14
 333-C-1 h:29 - Ø:10
 333-E-1 h:15 - Ø:10 (E-27)



1934 A-1 h:22 - Ø:17



1934 B-1 h:14 - Ø:12 (E27)
 1934 C-1 h:11 - Ø:9 (E14)
 1934 D-1 h:13 - Ø:13 (E27)



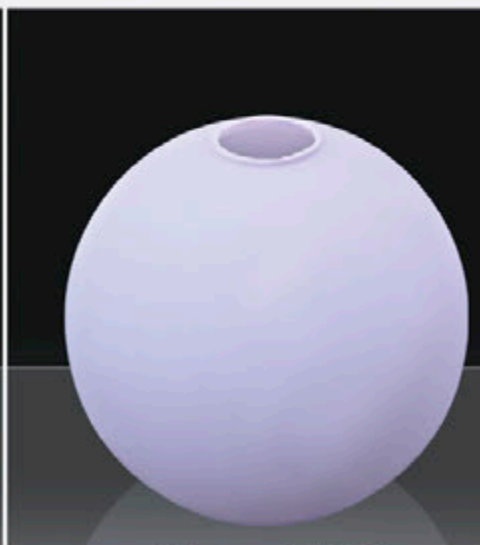
1942 A-1 h:22 - Ø:30



1942 B-1 h:20 - Ø:25



1933 A-1 h:15 - Ø:30
 1933 B-1 h:12 - Ø:25
 1933 C-1 h:12 - Ø:19



1910 A-1 h: 30 Ø:30
 1910 B-1 h: 25 Ø:25
 1910 C-1 h: 20 Ø:20



1910 D-1 h: 15 - Ø:18
 1910 E-1 h: 12 - Ø:14 (E27)



027-D h:24 - Ø:11



027-B-D h:17 - Ø:9



047-Ç h:24 - Ø:9



046-Alın Motif h:18 - Ø:9



048-5 Ç Mat h:20 - Ø:14



048-A-5 Ç Somon h:18 - Ø:12



048-B-5 Ç Mat h:13 - Ø:11



030-5 Ç Somon h:17 - Ø:12



050-5 Ç Mat h:14 - Ø:15



048 Big - 5 Ç h:24 - Ø: 17



048 Big - 5 h:24 - Ø: 17



24-1 Alaaddin h:19 - Ø:24
20-1 Alaaddin h:16 - Ø:20
17-1 Alaaddin h:14 - Ø:17
11-1 Alaaddin h:14 - Ø:11
09-1 Alaaddin h:11 - Ø:9



24-D Mat Alaaddin h:19 - Ø:24
20-D Mat Alaaddin h:16 - Ø:20
17-D Mat Alaaddin h:14 - Ø:17
11-D Mat Alaaddin h:14 - Ø:11
09-D Mat Alaaddin h:11 - Ø:9



24-Opal Alaaddin h:19 - Ø:24
20-Opal Alaaddin h:16 - Ø:20
17-Opal Alaaddin h:14 - Ø:17
11-Opal Alaaddin h:14 - Ø:11
09-Opal Alaaddin h:11 - Ø:9



026-D Mat h:25 - Ø:7



026-1 h:25 - Ø:7



025-D Mat h:28 - Ø:9



028 Ayetli h:13 - Ø:20
028 A Ayetli h:19 - Ø:15
028 B Ayetli h:16 - Ø:11



028 Şeffaf h:13 - Ø:20
028 A Şeffaf h:19 - Ø:15
028 B Şeffaf h:16 - Ø:11



028-B Yıldızlı h:16 - Ø:11



0220 Şeffaf h:12 - Ø:15

0220-1 h:12 - Ø:15



022 Şeffaf h:18 - Ø:10

022-36 h:18 - Ø:10



022-5 Ç Somon h:14 - Ø:32

022-A-5 Ç Mat h:10 - Ø:17



0222 Mat h:13 - Ø:30

0222-A Mat h:10 - Ø:17



2050 h:18 - Ø:25



2051 h:19 - Ø:23



BS-120x200-3
h:20 - Ø:12

BS-80x190-3
h:19 - Ø:8

AS-100x200-3
h:20 - Ø:10

AS-80x170-3
h:17 - Ø:8

S-50x110-Mat
h:11 - Ø:5

S-50x110-Şeffaf
h:11 - Ø:5



AS-100x200-45
h:20 - Ø:10

AS-100x150-45
h:15 - Ø:10

AS-80x90-30
h:8 - Ø:9 (E-14)

BS-120x200-45
h:20 - Ø:12

BS-100x150-45
h:15 - Ø:10

BS-80x90-30
h:8 - Ø:9 (E-14)



2080-C-5 Mat Delikli
h:16 - Ø:10-6 (E14)

BS 60x190-3
h:19 - Ø:6

333-C-5 Mat Delikli
h:29 - Ø:10

B-120x230-3
h:23 - Ø:12

444-C-5 Mat
h:10 - Ø:9 (E-14)



Transparan Boyalı Üfleme Camlar

Transparent Painted Blown Glass



Renk

Bal - Kırmızı - Mavi - Yeşil - Şeffaf - Pembe - Lila

Color

Honey - Red - Blue - Green - Clear - Pink - Lilac



2013-6 h:21 - Ø:20

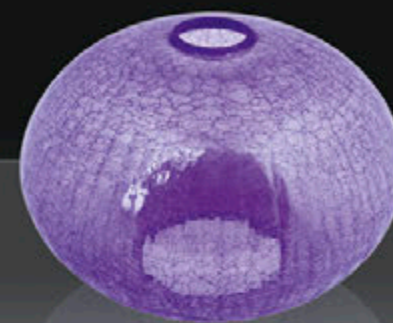


2013 B-6 h:11 - Ø:14 (E27)



1973-6 h:20 - Ø:30

1973 A-6 h:17 - Ø:25



1973 B-6 h:10 - Ø:14



1906 B-6 h:32 - Ø:15



1906 C-6 h:16 - Ø:10 (E27)



1908-6



h:29 - Ø:20-14



1111-6 h: 30 Ø:30

1111 A-6 h: 20 Ø:20



1111 B-6 h: 13 - Ø: 13 (E27)

1111 C-6 h: 9 - Ø: 9 (E14)



1120-6 h:30 - Ø:16



120-6 h:25 - Ø:13



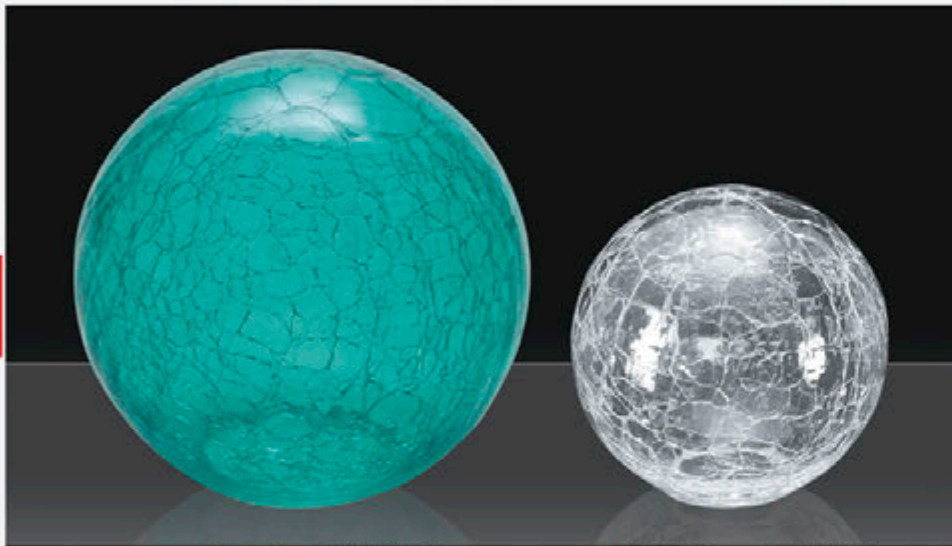
1934 -6 h:30 - Ø:27
1934 A-6 h:22 - Ø:17
1934 D-6 h:13 - Ø:12
1934 C-6 h:11 - Ø: 9 (E14)

1934 B-6 h:14 - Ø:12 (E27)



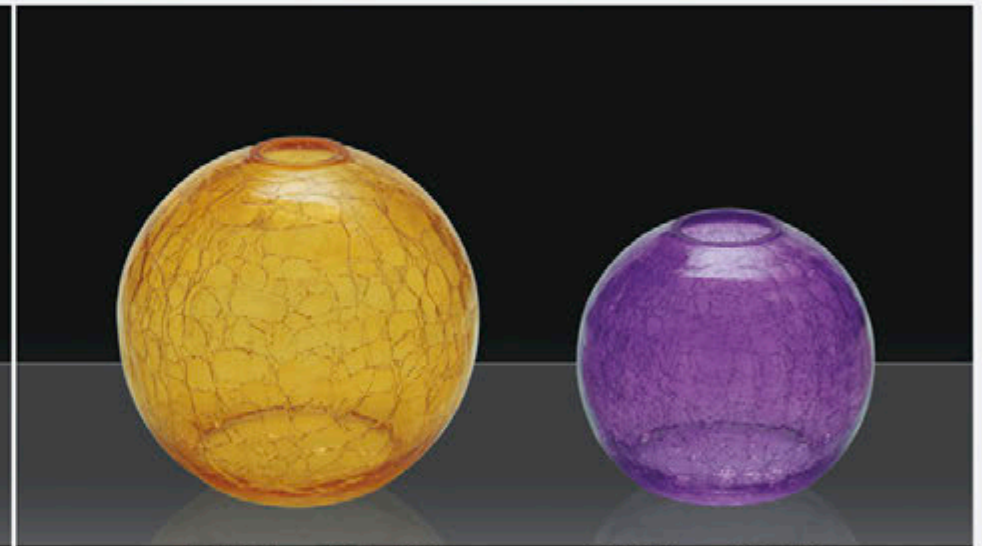
1117 A-6 h:23 - Ø:20

1117 B-6 h:15 - Ø:13 (E27)



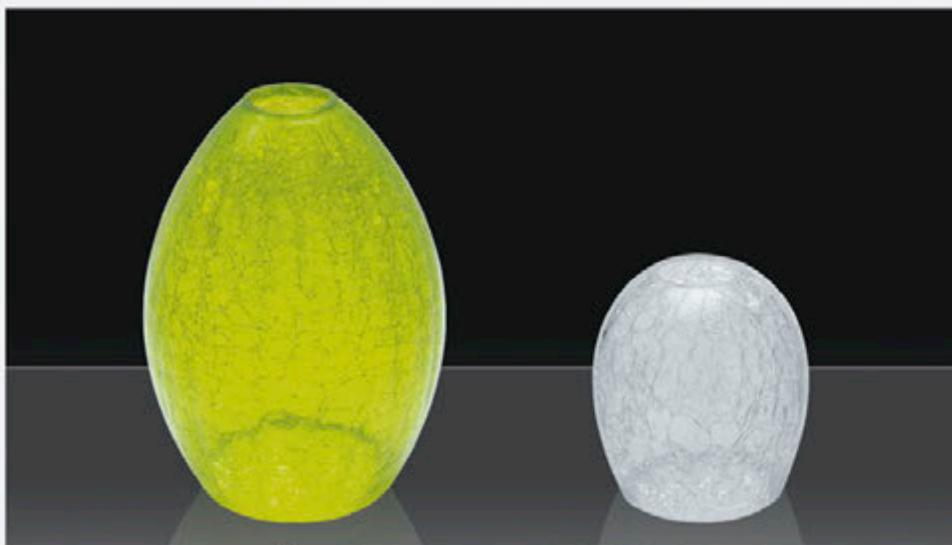
1911 -6 h: 35 Ø:35
1911 A-6 h: 30 Ø:30
1911 B-6 h: 25 Ø:25
1911 C-6 h: 20 Ø:20

1911 D-6 h: 15 Ø:15
1911 M-6 h: 13 Ø:13



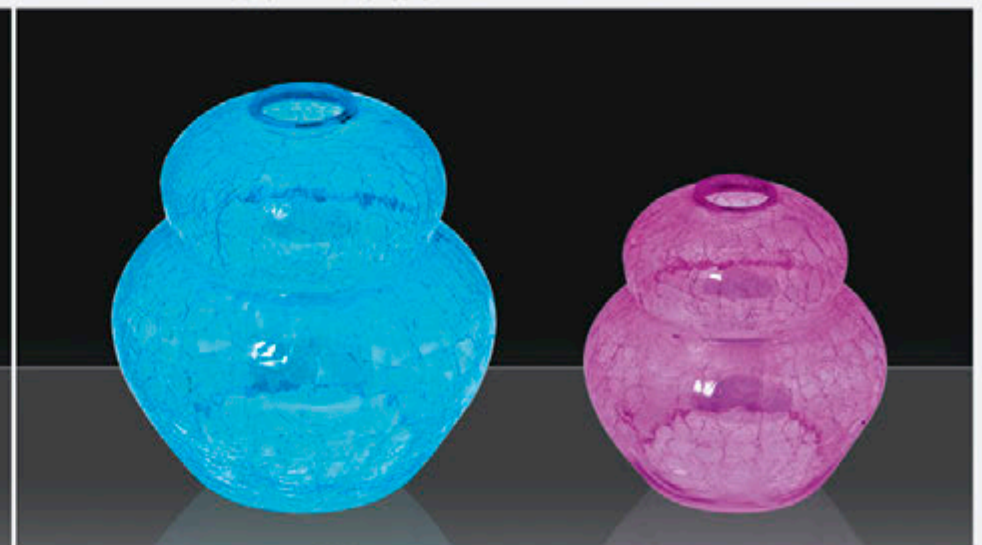
1910 A-6 h: 30 Ø:30
1910 B-6 h: 25 Ø:25
1910 C-6 h: 20 Ø:20
1910 D-6 h: 15 Ø:18

1910 E-6 h:12 - Ø:14
1910 F-6 h:10 - Ø:11 (E14)
1910 G-6 h: 7 - Ø:8 (E14)



116 -6 h:30 - Ø:23
116 A-6 h:26 - Ø:19
116 C-6 h:13 - Ø:12 (E27)

1116 C-6 h:10 - Ø:9 (E14)



1909 -6 h:30 - Ø:30
1909 A-6 h:20 - Ø:20
1909 B-6 h:13 - Ø:13

1909 C-6 h:10 - Ø:10 (E14)



110 -6 h:25 - Ø:23

110 A-6 h:13 - Ø:14 (E27)



2024 A - 6 h:18 - Ø:22

2024 B - 6 h:10 - Ø:15



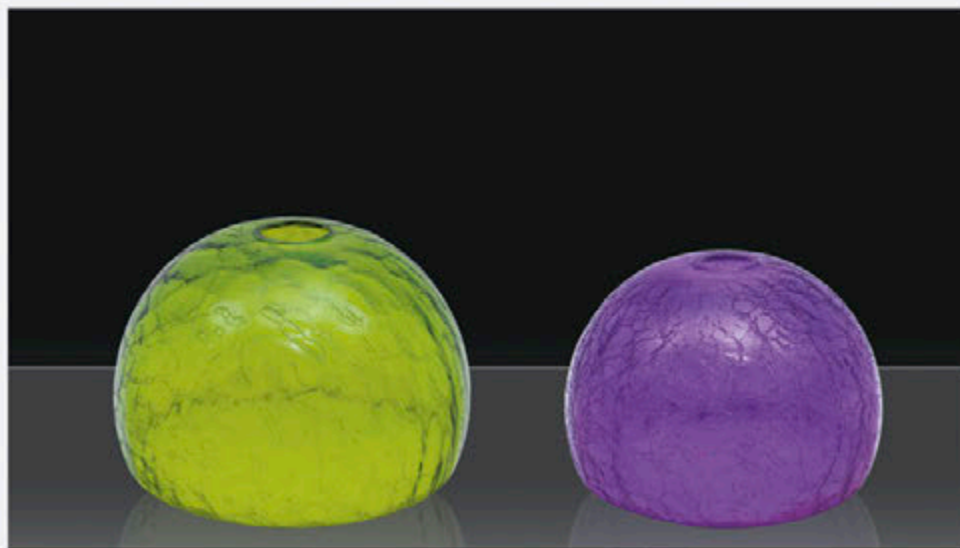
333-A-6 h:29 - Ø:19
333-B-6 h:29 - Ø:14
333-C-6 h:29 - Ø:10

333-E-6 h:15 - Ø:10(E27)



1921-6 h:18 - Ø:17

1921-A-6 h:13 - Ø:13(E27)
1921-B-6 h:13 - Ø:11(E27)



1916 -6 h:26 - Ø:35
1916 A-6 h:22 - Ø:30

1916 B-6 h:19 - Ø:25



118 -6 h:30 - Ø:23

118 A-6 h:26 - Ø:19



2035 A-TP h:20 - Ø:21



2035 B-TP h:13 - Ø:15 (E27)



2058 A-TP h:20 - Ø:20



2058 B-TP h:12 - Ø:14 (E27)



123 A-6 h:19 - Ø:23
123 B-6 h:12 - Ø:13 (E14)



2007 -6 h:30 - Ø:10-15
2007 A-6 h:16 - Ø:10-15 (E27)



2012 A-TP h:21 - Ø:17



2012 B-TP h:13 - Ø:12 (E27)



028 A-6 h:19 - Ø:15
028 B-6 h:16 - Ø:10



028 -6 h:13 - Ø:20



116 A-6-4 h:26 - Ø:19



116 C-6-4 h:13 - Ø:12 (E27)



333 A-6-4 h:26 - Ø:19
333 B-6-4 h:29 - Ø:14
333 C-6-4 h:29 - Ø:10



333 E-6-4 h:15 - Ø:10



1910 B-6-4 h:25 - Ø:25
1910 C-6-4 h:20 - Ø:20



1910 E-6-4 h:12 - Ø:14



123 A-6-4 h:19 - Ø:20



123 B-6-4 h:12 - Ø:13 (E14)



116 A-6-5-Gül h:26 - Ø:19



116 A-6-5-ÇM h:26 - Ø:19



118 A-6-4 h:26 - Ø:19

e fe
glass



www.efecam.com.tr
www.efeglass.com

Endüstriyel Otomasyon Camlar

Industrial Automation Glass

Renk

Mavi - Yeşil - Şeffaf - Pembe - Lila

Opak : Amber - Somon - Yeşil - Lila - Pembe

Color

Blue - Green - Clear - Pink - Lilac

Opaque : Amber - Somon - Green - Lilac - Pink



1921 Wixx h:18 - Ø:17



1921 Looney Tunes h:18 - Ø:17



1921 Tweety h:18 - Ø:17



1921 Ben 10 h:18 - Ø:17



1006 A-30-83 h:13 - Ø:30



1006 A-30-80 h:13 - Ø:30



1006 A-30-81 h:13 - Ø:30



1147 A-30-73 h:15 - Ø:30



1147 A-30-74 h:15 - Ø:30



1147 A-30-85 h:15 - Ø:30



106-ÇD-10 h:15-Ø:36
106-A-ÇD-10 h:13-Ø:30



106-ÇD-11 h:15-Ø:36
106-A-ÇD-11 h:13-Ø:30



106-ÇD-12 h:15-Ø:36
106-A-ÇD-12 h:13-Ø:30



1147-ÇD-46 h:18-Ø:34
1147-A-ÇD-55 h:13-Ø:26



1147-ÇD-55 h:18-Ø:34
1147-A-ÇD-55 h:13-Ø:26



1147-ÇD-56 h:18-Ø:34
1147-A-ÇD-55 h:13-Ø:26



139-ÇD-40 h:14-Ø:36
139-A-ÇD-40 h:12-Ø:27



139-ÇD-41 h:14-Ø:36
139-A-ÇD-41 h:12-Ø:27



139-ÇD-42 h:14-Ø:36
139-A-ÇD-42 h:12-Ø:27



1147 -ÇD-13 h:18 - Ø:34
1147 A-ÇD-13 h:13 - Ø:26



1147 -ÇD-14 h:18 - Ø:34
1147 A-ÇD-14 h:13 - Ø:26



1147 -ÇD-15 h:18 - Ø:34
1147 A-ÇD-15 h:13 - Ø:26



1147 -ÇD-16 h:18 - Ø:34
1147 A-ÇD-16 h:13 - Ø:26



1147 -ÇD-17 h:18 - Ø:34
1147 A-ÇD-17 h:13 - Ø:26



1147 -ÇD-18 h:18 - Ø:34
1147 A-ÇD-18 h:13 - Ø:26



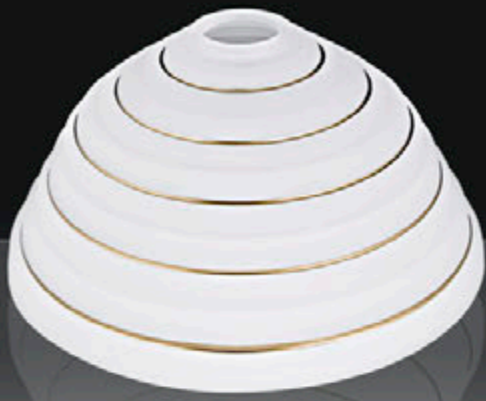
106-SD-5 h:15 - Ø:36
1006 A-SD-5 h:13 - Ø:30



106-ÇD-19 h:15 - Ø:36
1006 A-ÇD-19 h:13 - Ø:30



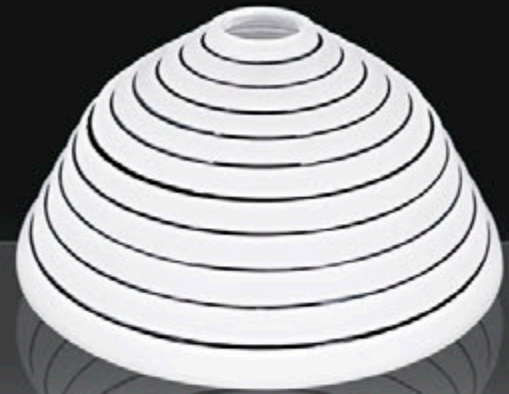
106-ÇD-18 h:15 - Ø:36
1006 A-ÇD-18 h:13 - Ø:30



1214 A-Y h:14 - Ø:28



1214 A-Y h:14 - Ø:28



1214 A-1-Y h:14 - Ø:28



1039-5-41 h:20 - Ø:32



1039-A-5-41 h:16 - Ø:22



1039-B-5-41 h:12 - Ø:16



106-5-41 h:15 - Ø:36



1006-A-5-41 h:13 - Ø:30



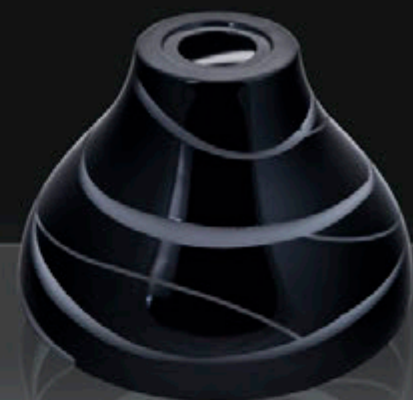
106-C-5-41 h:11 - Ø:14



1039-T-3 h:20 - Ø:32
1039-A-T-3 h:16 - Ø:22



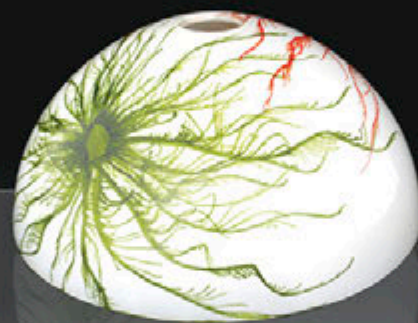
1039-01 h:20 - Ø:32
1039-A-01 h:16 - Ø:22
1039-B-01 h:12 - Ø:16



1039-5-D h:20 - Ø:32
1039-A-5-D h:16 - Ø:22



1147-PS h:18 - Ø:34
1147-A-PS h:13 - Ø:26



106-PS h:15 - Ø:36
1006-A-PS h:13 - Ø:30



1039-PS h:20 - Ø:32
1039-A-PS h:16 - Ø:22



1147-31-PS h:18 - Ø:34
1147-A-31-PS h:13 - Ø:26



1039-FD-1 h:20 - Ø:32
1039-A-FD-1 h:16 - Ø:22



1039-FD-2 h:20 - Ø:32
1039-A-FD-2 h:16 - Ø:22

107-45-DK h:10 - Ø:45
 107-40-DK h:10 - Ø:40
 107-35-DK h:10 - Ø:35
 107-30-DK h:10 - Ø:30
 107-25-DK h:10 - Ø:25
 107-20-DK h:10 - Ø:20
 107-16-DK h:10 - Ø:16 (E-27)



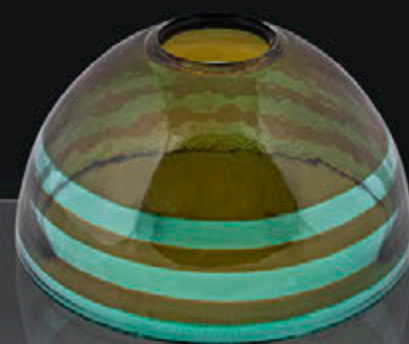
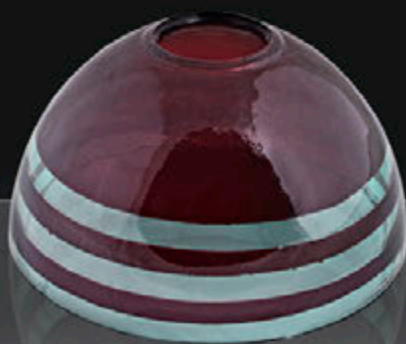
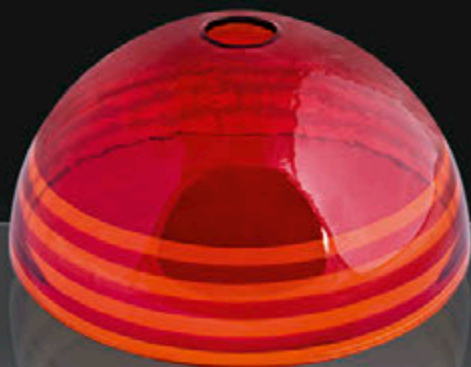
1006-Big-DK h:18 - Ø:45
 1006-DK h:16 - Ø:40
 1006-A-DK h:13 - Ø:30
 106-DK h:15 - Ø:36
 106-A-DK h:10 - Ø:22
 1006-B-DK h:10 - Ø:16 (E-27)



127-50-DK h:13 - Ø:50
 127-40-DK h:11 - Ø:40
 127-30-DK h:9 - Ø:30



1006-A-10 h:13 - Ø:30



1006-A-TP-1 h:13 - Ø:30
 1006-B-TP-1 h:9 - Ø:16

1006-A-TP-2 h:13 - Ø:30
 1006-B-TP-2 h:9 - Ø:16

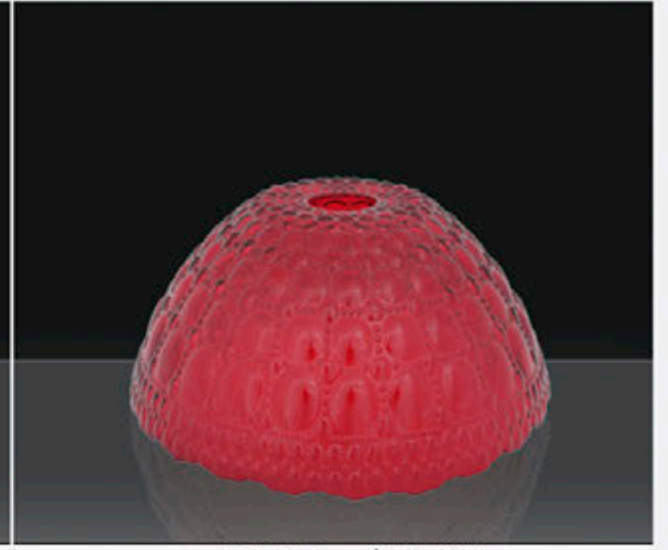
1006-A-TP-3 h:13 - Ø:30
 1006-B-TP-3 h:9 - Ø:16



1187 A-1-6 h:13 - Ø:25



1182 A-1-6 h:13 - Ø:27



1178 A-1-6 h:12 - Ø:27



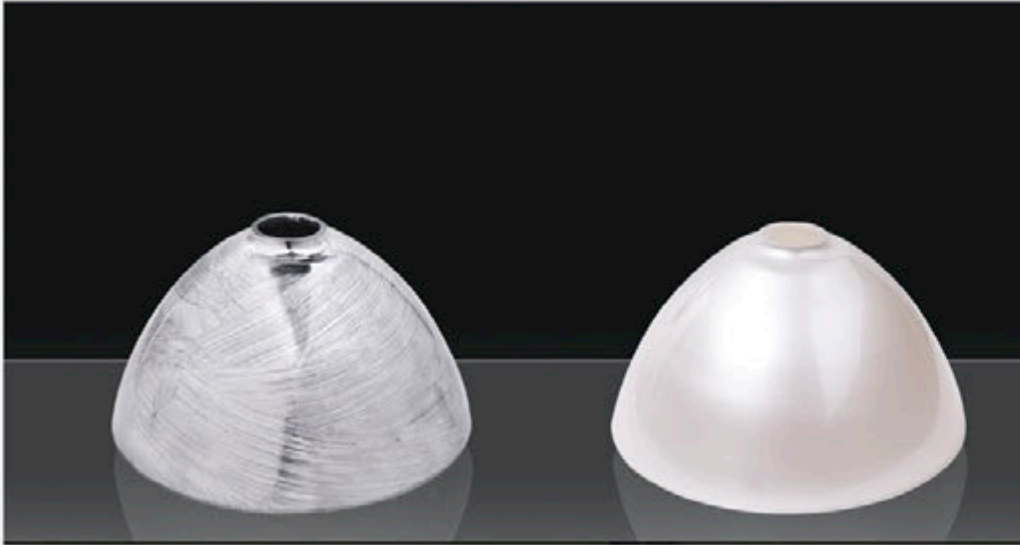
1147 JF h:18 - Ø:34
1147 AJF h:13 - Ø:26



1147 JF-1 h:18 - Ø:34
1147 AJF-1 h:13 - Ø:26



1039 JF-2 h:20 - Ø:32
1039 AJF-2 h:16 - Ø:22



1147 A Gümüş h:13 - Ø:26



1147 A Sedef h:13 - Ø:26



106 C-J h:11 - Ø:14



106 C-JD h:11 - Ø:14



1147-5-PD h:18 - Ø:34
 1147 A-5-30-PD h:15 - Ø:30
 1147 A-5-PD h:13 - Ø:26

1147-5-ÇM h:18 - Ø:34
 1147 A-5-30-ÇM h:15 - Ø:30
 1147 A-5-ÇM h:13 - Ø:26

1147-5-KD h:18 - Ø:34
 1147 A-5-30-KD h:15 - Ø:30
 1147 A-5-KD h:13 - Ø:26



1147-5-32 h:18 - Ø:34
 1147-A-5-30-32 h:15 - Ø:30
 1147-A-5-32 h:13 - Ø:26

1147-5-29 h:18 - Ø:34
 1147-A-30-29 h:15 - Ø:30
 1147-A-5-29 h:13 - Ø:26

1147-5-Suyolu h:18 - Ø:34
 1147-A-30-Suyolu h:15 - Ø:30
 1147-A-5-Suyolu h:13 - Ø:26



1147-5-31 h:18 - Ø:34
 1147-A-30-31 h:15 - Ø:30
 1147-A-5-31 h:13 - Ø:26

1147-5-48 h:18 - Ø:34
 1147-A-5-30-48 h:15 - Ø:30
 1147-A-5-48 h:13 - Ø:26

1147-5-26 h:18 - Ø:34
 1147-A-30-26 h:15 - Ø:30
 1147-A-5-26 h:13 - Ø:26



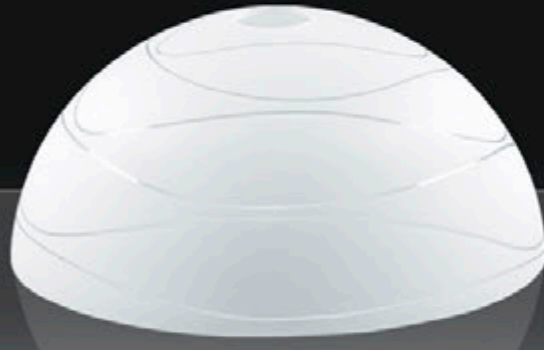
1039-5-32 h:20 - Ø:32
 1039-A-5-32 h:16 - Ø:22
 1039-B-5-32 h:12 - Ø:16



1039-5-Suyolu h:20 - Ø:32
 1039-A-5-Suyolu h:16 - Ø:22
 1039-B-5-Suyolu h:12 - Ø:16



1039-5-D h:20 - Ø:32
 1039-A-5-D h:16 - Ø:22
 1039-B-5-D h:12 - Ø:16



106-5 Su Yolu h:15 - Ø:36
 1006-5 Su Yolu h:13 - Ø:30



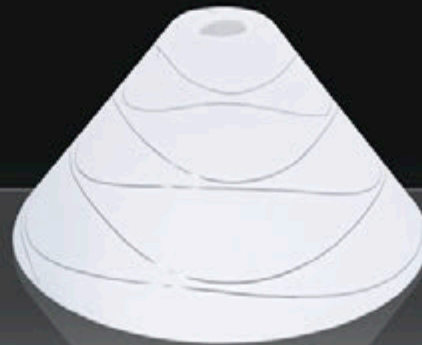
106-5-PD h:15 - Ø:36
 1006-A-5-PD h:13 - Ø:30



106-5-KD h:15 - Ø:36
 1006-A-5-KD h:13 - Ø:30



1038-5 Su Yolu h:16 - Ø:45
 1038-A-5 Su Yolu h:14 - Ø:35



1036-5 Su Yolu h:21 - Ø:40



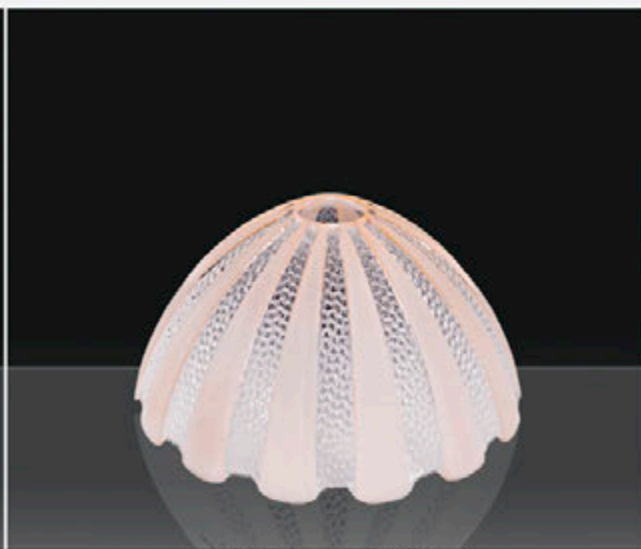
1036-5 Raket h:21 - Ø:40



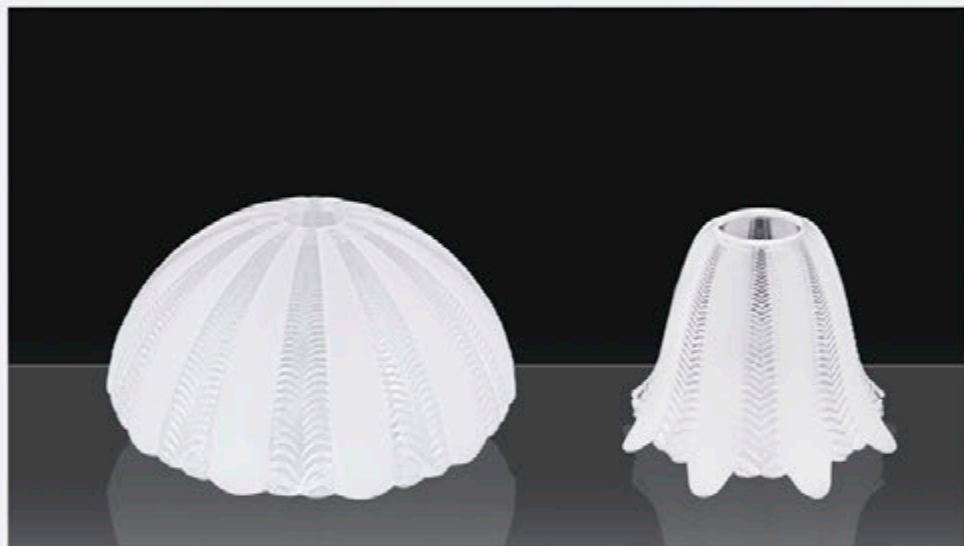
1190 A-5 h:13 - Ø:28



1187 A-5 h:13 - Ø:25

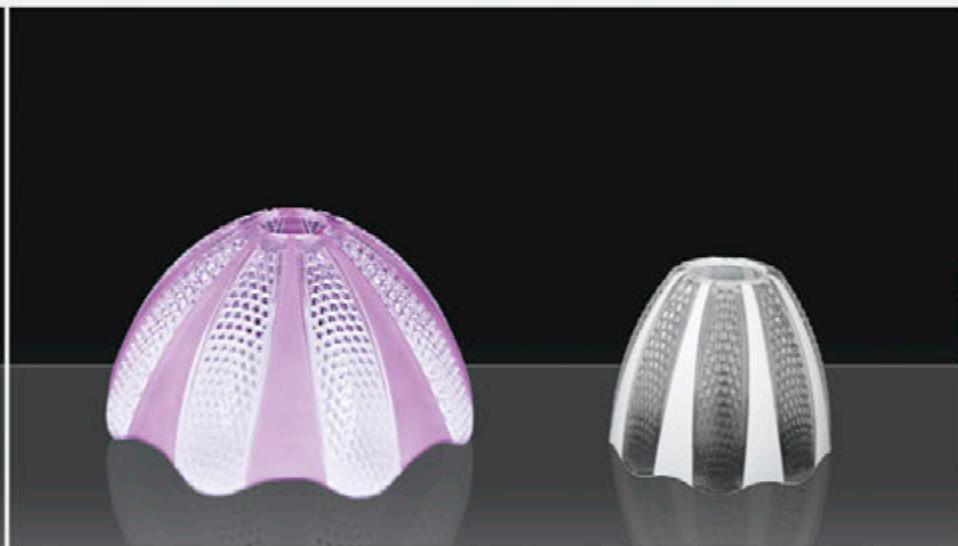


1186 A-5 h:13 - Ø:25



1179 A-5 h:11 - Ø:30

1179 B-5 h:12 - Ø:16



1188 A-5 h:14 - Ø:28

1188 B-5 h:11 - Ø:13



1167 A-F-S h:20 - Ø:20

1167 C-F-S h:13 - Ø:13



1168 A-1-Y h:12 - Ø:27

1168 C-1-Y h:12 - Ø:13

107-45-5C h:10 - Ø:45
 107-40-5C h:10 - Ø:40
 107-35-5C h:10 - Ø:35
 107-30-5C h:10 - Ø:30
 107-25-5C h:10 - Ø:25



efe
glass



1145-5 Mat h:16 - Ø:36
 1145-A-5 Mat h:13 - Ø:30
 1145-B-5 Mat h:11 - Ø:26

1145-D-5 Mat h: 9 - Ø:16 (E-27)
 1145-C-5 Mat h:12 - Ø:14 (E-27)

70



1162-51 h:15 - Ø:36
 1162 A-51 h:15 - Ø:25
 1162 B-51 h:10 - Ø:16



1162-5 h:15 - Ø:36
 1162 A-5 h:15 - Ø:25
 1162 B-5 h:10 - Ø:16



1021-5 Alev h:22 - Ø:17
 1021-A-5 Alev h:17 - Ø:15



1021-5 Gül h:22 - Ø:17
 1021-A-5 Gül h:17 - Ø:15





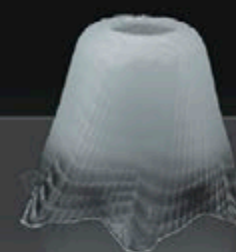
1191 A-5 h:14 - Ø:28



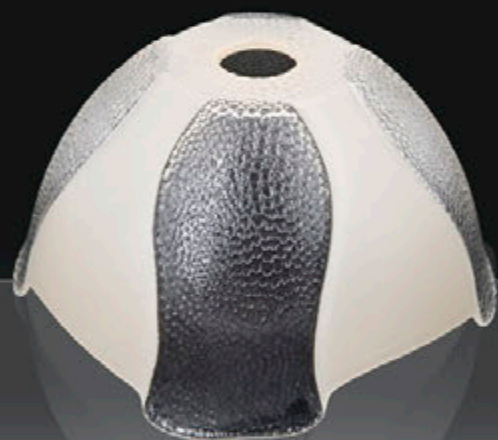
1191 B-5 h:12 - Ø:15



1177 A-5 h:12 - Ø:27



1177 B-5 h:11 - Ø:15



1151 A-5 h:14 - Ø:29
1151 B-5 h:12 - Ø:22



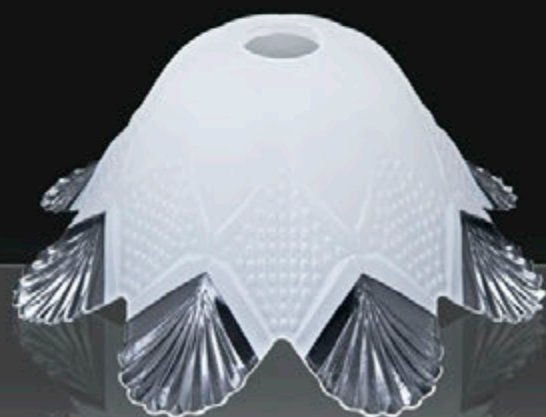
1151 C-5 h:12 - Ø:17(E27)
1151 D-5 h:11 - Ø:14(E27)
1151 E-5 h:11 - Ø:11(E14)



1213 A-5 h:15 - Ø:27



1213 B-5 h:12 - Ø:15(E27)



1170 -5-A h:16 - Ø:36
1170 A-5-A h:13 - Ø:31



1170 B-5-A h:11 - Ø:14(E27)



1170 -5-U h:16 - Ø:36
1170 A-5-U h:13 - Ø:31



1170 B-5-U h:11 - Ø:14(E27)



1154-A-5 h:18 - Ø:30

1154-B-5 h:11 - Ø:23



1153-A-5 h:16 - Ø:30
1153-B-5 h:11 - Ø:23

1153-C-5 h:12 - Ø:16 (E27)



1148-5 h:14 - Ø:36
1148-A-5 h:13 - Ø:30

1148-B-5 h:12 - Ø:15 (E27)



1157-A-5 h:18 - Ø:30

1157-B-5 h:12 - Ø:23
1157-C-5 h:11 - Ø:17 (E27)



1155-A-5 h:13 - Ø:28

1155-B-5 h:12 - Ø:16 (E27)



1163-5 Mat h:19 - Ø:38
1163-A-5 Mat h:16 - Ø:36
1163-B-5 Mat h:15 - Ø:26

1163-C-5 Mat h:12 - Ø:18(E27)
1163-D-5 Mat h:11 - Ø:15(E14)





1138-5-C h:16 - Ø:36
1138-A-5-Ç h:15 - Ø:28



1138-B-5-Ç h:11 - Ø:14 (E-27)
1138-C-5-Ç h:10 - Ø:13 (E-14)



1138-5-Ç-55 h:16 - Ø:36
1138-A-5-Ç-55 h:15 - Ø:28



1138-B-5-Ç-55 h:11 - Ø:14 (E-27)
1138-C-5-55 h:10 - Ø:13 (E-14)



1138-5 h:16 - Ø:36
1138-A-5 h:15 - Ø:28



1138-B-5 h:11 - Ø:14 (E-27)



1139-5 h:16 - Ø:37
1139-A-5 h:14 - Ø:29



1139-B-5 h:11 - Ø:16 (E27)



044-5 Su Yolu h:17 - Ø:58
044-A-5 Su Yolu h:11 - Ø:40



044-5 Irmak h:17 - Ø:58
044-A-5 Irmak h:11 - Ø:40



1034-5 Su Yolunu h:16 - Ø:37



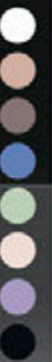
1183-A-5 h:12-Ø:26



1183-A-1-F-5 h:12-Ø:26



1183-A-F-5 h:12-Ø:26



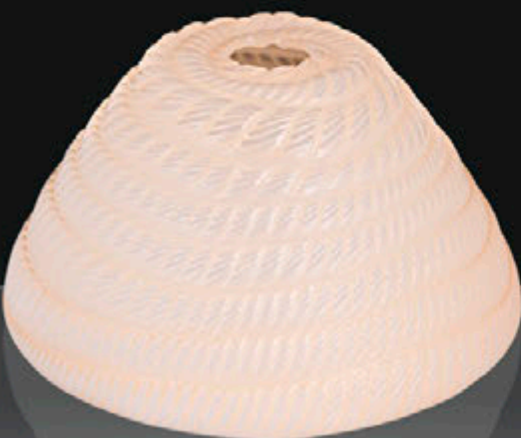
1185 A-5 h:13-Ø:27



1185 A-F-5 h:13-Ø:27



1185 A-31 h:13-Ø:27



1215 A-1-MS h:12-Ø:28



1215 A-1-FS h:12-Ø:28





1201 -A-MS h:15-Ø:29

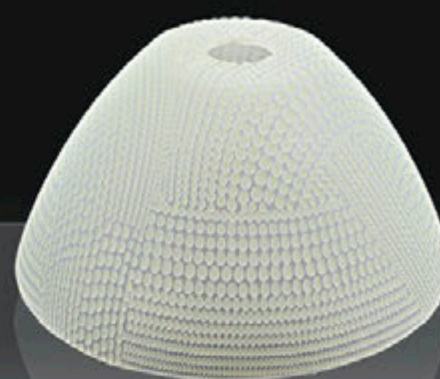


1202 -A-MS h:15-Ø:29

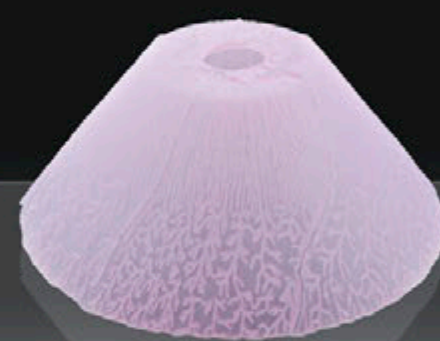


1210 A-1-MS h:14 - Ø:28

1210 A- MS h:14 - Ø:28



1203 A-1-MS h:15 - Ø:29



1205 A-1-MS h:13 - Ø:30



1169 -A-1 h:11 - Ø:27



1250 FS-3 h:15 - Ø:36
1250 A-FS-3 h:13 - Ø:30



1250 B-FS-31 h:9 - Ø:16



e
fe
glass

1168-A-1-Y h:12 - Ø:27



1168-C-1-Y h:12 - Ø:15



1140-1-FS h:13 - Ø:36



1140-A-1-FS h:12 - Ø:30



1178-A-1-FS h:12 - Ø:27



1178-B-MS h:11 - Ø:15



77



1195-A-1-MS h:16 - Ø:30



1195-C-1 MS h:13 - Ø:16 (E-27)



1182-A-TS h:12 - Ø:27



1182-A-MS h:12 - Ø:27



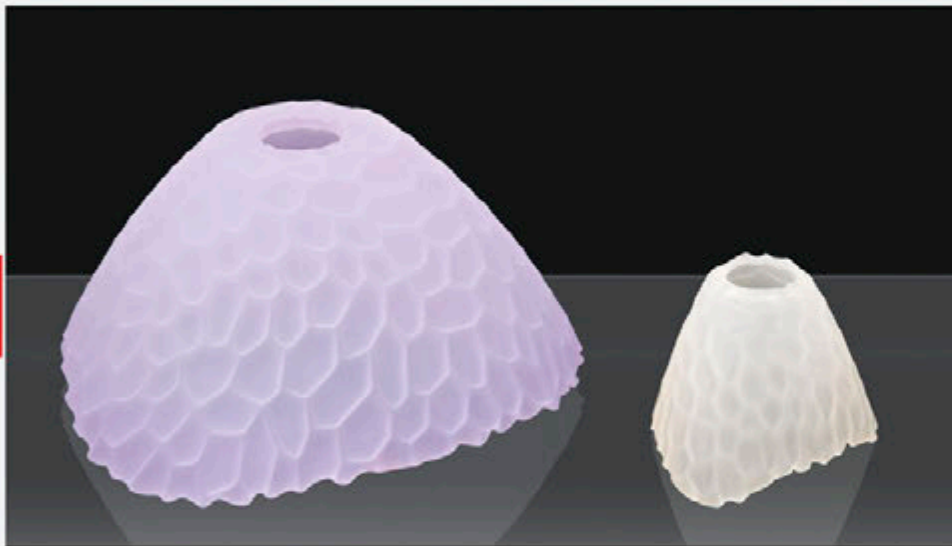
1152-A-1-FS h:13 - Ø:28

1152-B-1-FS h:12 - Ø:15 (E27)



1152-A-1-TS h:13 - Ø:28

1152-B-1-MS h:12 - Ø:15 (E27)



1152-A-1 h:13 - Ø:28

1152-B-1 h:12 - Ø:15 (E27)



1158-A-1 h:15 - Ø:28

1158-B-1 h:11 - Ø:17 (E27)
1158-C-1 h:11 - Ø:14 (E27)



1158-A-1-MS h:15 - Ø:28

1158-B-1-MS h:11 - Ø:17 (E27)
1158-C-1-MS h:11 - Ø:14 (E27)



1158-A-1-FS h:15 - Ø:28

1158-B-FS h:11 - Ø:17 (E27)
1158-C-FS h:11 - Ø:14 (E27)



1156-A-1-MS h:14 - Ø:30



1156-B-1-MS h:12 - Ø:16 (E27)
1156-C-1-MS h:11 - Ø:14 (E27)



1156-A-FS h:14 - Ø:30



1156-B-FS h:12 - Ø:16 (E27)
1156-C-FS h:11 - Ø:14 (E27)



1156-A-31 h:14 - Ø:30



1156-B-31 h:12 - Ø:16 (E27)
1156-C-31 h:11 - Ø:14 (E27)



1156-A-1 h:14 - Ø:30



1156-B-1 h:12 - Ø:16 (E27)
1156-C-1 h:11 - Ø:14 (E27)



1177-A-31 h:12 - Ø:27



1177-B-31 h:11 - Ø:15(E27)



1128-A-31-FS h:13 - Ø:30



1128-A-31 h:13 - Ø:30



1157-A-31 h:18 - Ø:30

1157-B-31 h:12 - Ø:23
1157-C-31 h:11 - Ø:17



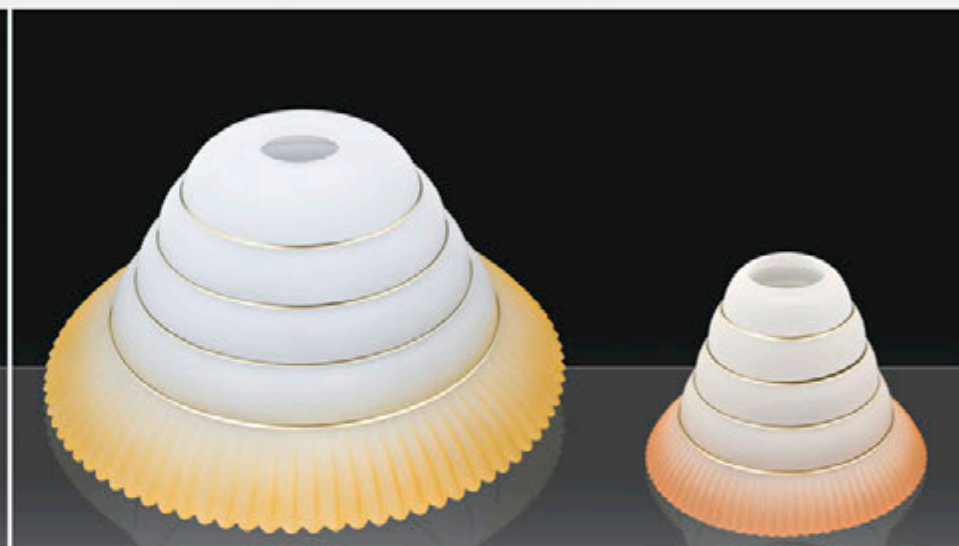
1157-A-1 h:18 - Ø:30

1157-B-1 h:12 - Ø:23
1157-C-1 h:11 - Ø:17



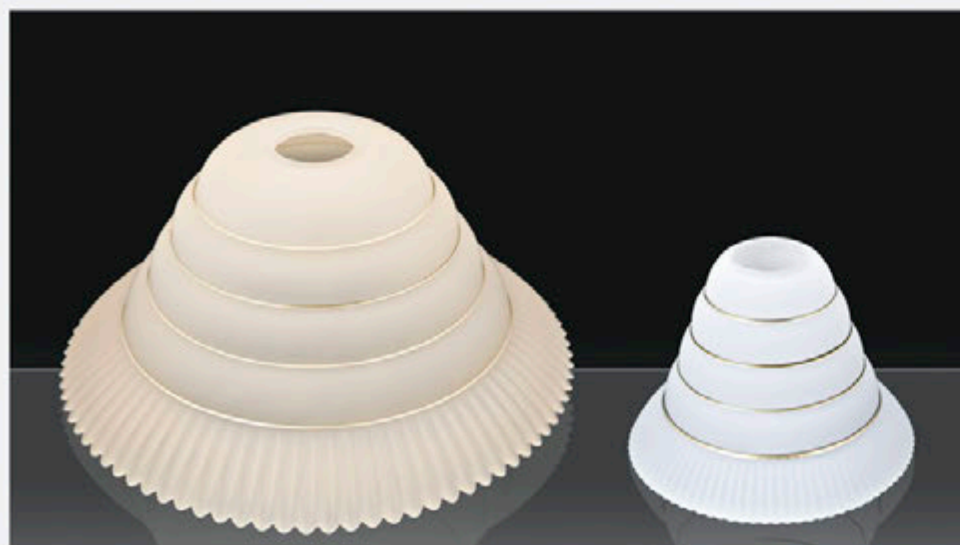
1157-A-1-FS h:18 - Ø:30

1157-B-1-FS h:12 - Ø:23
1157-C-1-FS h:11 - Ø:17



1155-A-31-Y h:13 - Ø:28

1155-B-31-Y h:12 - Ø:16 (E27)



1155-A-1-Y h:13 - Ø:28

1155-B-1-Y h:12 - Ø:16 (E27)



1155-A-3-FS-Y h:13 - Ø:28

1155-B-1-Y h:12 - Ø:16



1138-1-FS-Y h:16 - Ø:36
1138-A-1-FS-Y h:16 - Ø:28

1138-B-1-FS-Y h:12 - Ø:17 (E-27)



1138-1-Y h:16 - Ø:36
1138-A-1-Y h:16 - Ø:28

1138-B-1-Y h:13 - Ø:17 (E-27)



1138-31 h:16 - Ø:36
1138-A-31 h:16 - Ø:28
1138-B-31 h:12 - Ø:17 (E27)
1138-C-31 h:12 - Ø:16 (E14)

1138-1 h:16 - Ø:36
1138-A-1 h:16 - Ø:28
1138-B-1 h:12 - Ø:17 (E27)
1138-C-1 h:12 - Ø:16 (E14)



1134-3-1 h:20 - Ø:30
1134-A-3-1 h:18 - Ø:25

1134-6-1 h:20 - Ø:30
1134-A-6-1 h:18 - Ø:25



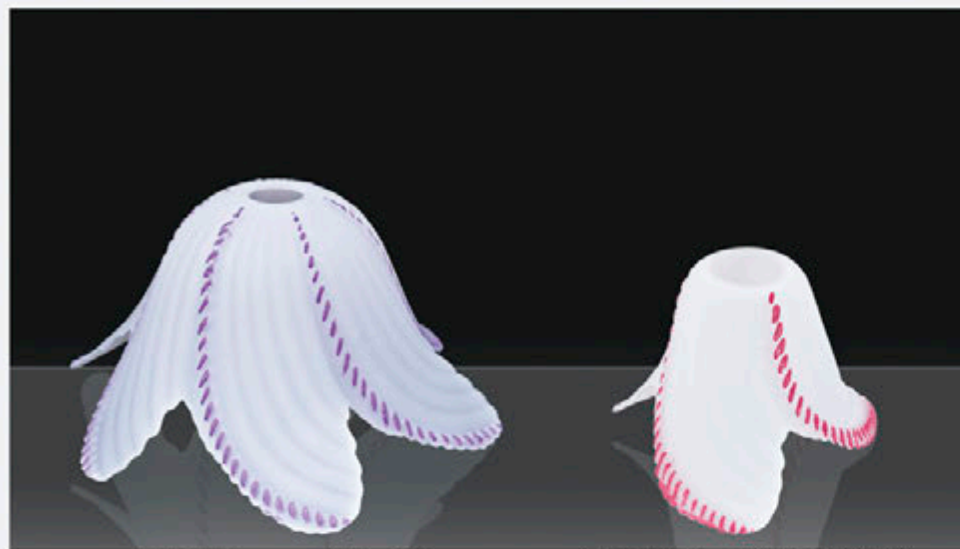
1148-31 h:14 - Ø:36
1148-A-31 h:13 - Ø:30

1148-B-31 h:12 - Ø:15



1148-1 h:14 - Ø:36
1148-A-1 h:13 - Ø:30

1148-B-1 h:12 - Ø:15 (E27)



1163-1-F-S h:18 - Ø:38
 1163-A-1-F-S h:18 - Ø:36
 1163-B-1-F-S h:15 - Ø:26

1163-C-1-F-S h:12 - Ø:18 (E-27)
 1163-D-1-F-S h:11 - Ø:15 (E-14)



1163-3-1 h:18 - Ø:38
 1163-A-3-1 h:16 - Ø:36
 1163-B-3-1 h:15 - Ø:26

1163-C-31 h:18 - Ø:18 (E-27)
 1163-D-31 h:11 - Ø:15 (E-14)



1135-1-F-S h:15 - Ø:35
 1135-A-1-F-S h:16 - Ø:28

1135-B-1-F-S h:12 - Ø:17 (E-27)
 1135-C-1-F-S h:12 - Ø:17 (E-14)



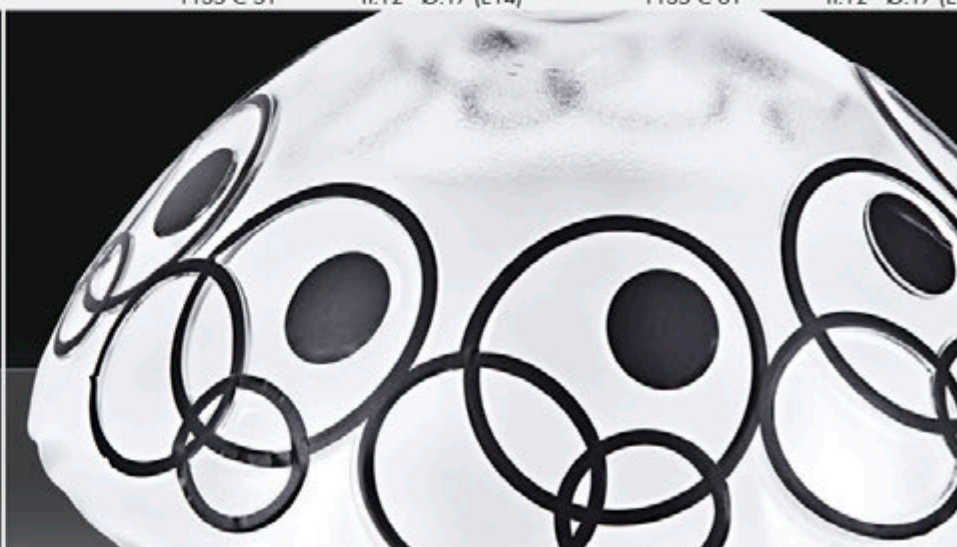
1135-51 h:15 - Ø:35
 1135-A-51 h:16 - Ø:28
 1135-B-51 h:12 - Ø:17
 1135-C-51 h:12 - Ø:17 (E14)

1135-61 h:15 - Ø:35
 1135-A-61 h:16 - Ø:28
 1135-B-61 h:12 - Ø:17
 1135-C-61 h:12 - Ø:17 (E14)



1135-31 h:15 - Ø:35
 1135-A-31 h:16 - Ø:28

1135-B-31 h:12 - Ø:17 (E-27)
 1135-C-31 h:12 - Ø:16 (E-14)





1154-A-31 h:18 - Ø:30



1154-B-31 h:11 - Ø:23



1154-A-1 h:18 - Ø:30



1154-B-1 h:11 - Ø:23



1143-31 h:16 - Ø:36
1143-A-31 h:14 - Ø:26



1143-B-31 h:12 - Ø:15 (E27)



1143-1 h:16 - Ø:36
1143-A-1 h:14 - Ø:26

1143-B-1 h:12 - Ø:15 (E27)



1170-31 h:16 - Ø:36
1170-A-31 h:13 - Ø:31



1170-B-31 h:11 - Ø:14 (E27)



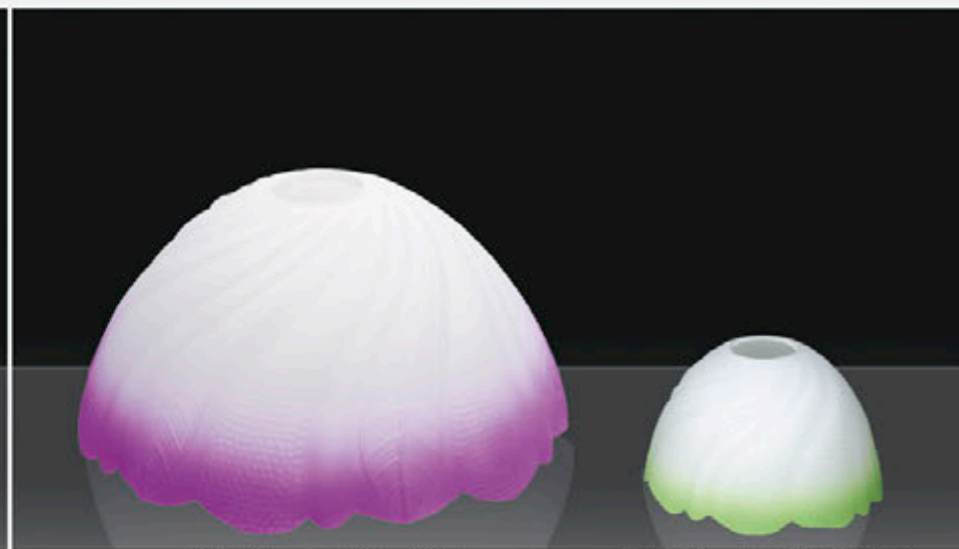
1170-1 h:16 - Ø:36
1170-A-1 h:13 - Ø:31

1170-B-1 h:11 - Ø:14 (E27)



1141-81 h:18 - Ø:34
1141-A-81 h:16 - Ø:25

1141-B-81 h:12 - Ø:16 (E-27)



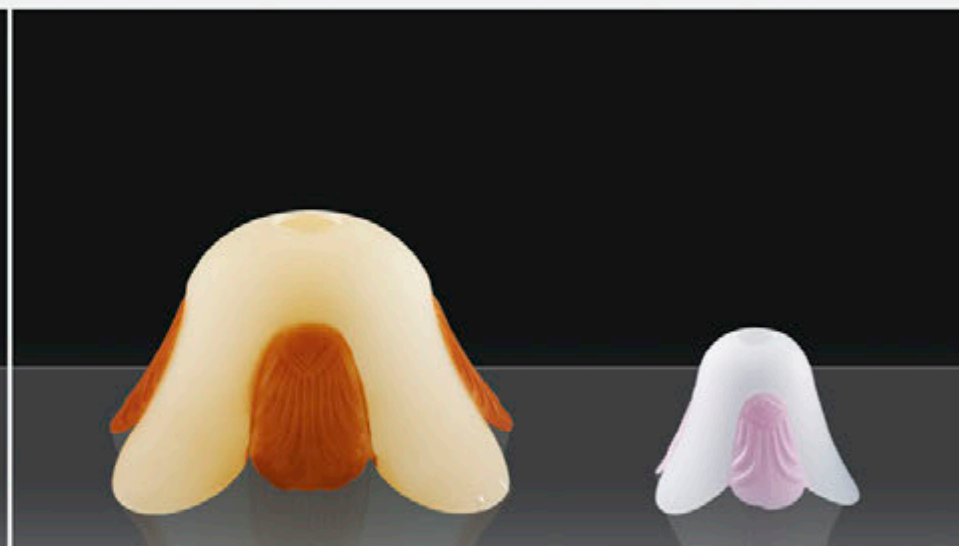
1141-31 h:18 - Ø:34
1141-A-31 h:18 - Ø:26

1141-B-31 h:12 - Ø:16 (E27)



1141-1 h:18 - Ø:34
1141-A-1 h:18 - Ø:26

1141-B-1 h:12 - Ø:16 (E27)



1164-51 h:18 - Ø:37
1164-A-51 h:15 - Ø:29

1164-B-51 h:12 - Ø:16 (E-27)
1164-C-51 h:11 - Ø:15 (E-14)



1136-61 h:16 - Ø:38
1136-A-61 h:15 - Ø:30
1136-C-61 h:12 - Ø:15

1136-51 h:16 - Ø:38
1136-A-51 h:15 - Ø:30
1136-C-51 h:12 - Ø:15



1136-31 h:16 - Ø:38
1136-A-31 h:15 - Ø:30
1136-C-31 h:12 - Ø:15 (E27)

1136-1 h:16 - Ø:38
1136-A-1 h:15 - Ø:30
1136-C-1 h:12 - Ø:15 (E27)



1139-51 h:16 - Ø:37
1139-A-5-1 h:14 - Ø:29

1139-B-51 h:12 - Ø:16 (E-27)



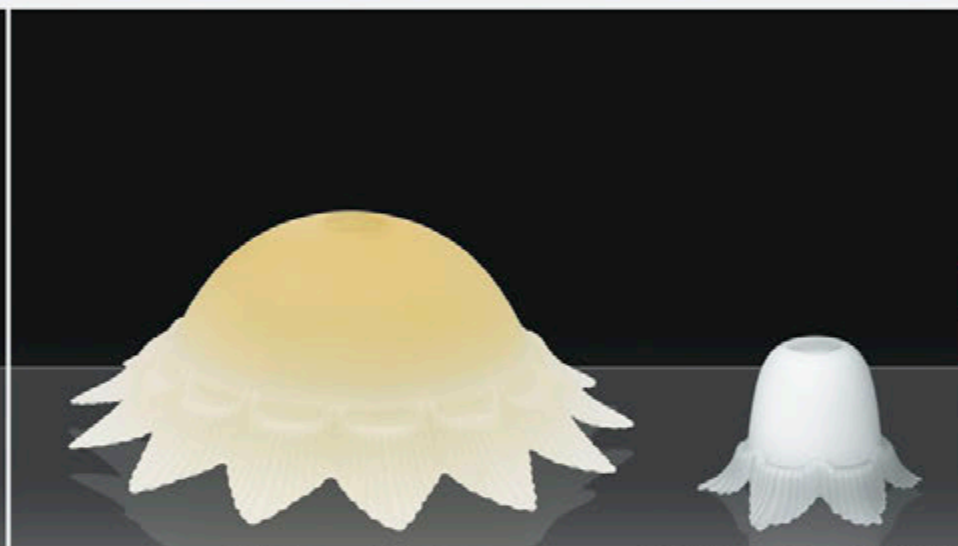
1139-31 h:16 - Ø:37
1139-A-31 h:14 - Ø:29
1139-B-31 h:12 - Ø:16

1139-1 h:16 - Ø:37
1139-A-1 h:14 - Ø:29
1139-B-1 h:12 - Ø:16 (E27)



1146-31 h:17 - Ø:40
1146-A-31 h:16 - Ø:32

1146-B-31 h:11 - Ø:15 (E27)
1146-C-31 h:11 - Ø:14 (E14)



1146-1 h:17 - Ø:40
1146-A-1 h:16 - Ø:32

1146-B-1 h:11 - Ø:15 (E27)
1146-C-1 h:11 - Ø:14 (E14)



101 B-31 h:11 - Ø:24



103 B-31 h:12 - Ø:24



102 A-31 h:12 - Ø:26



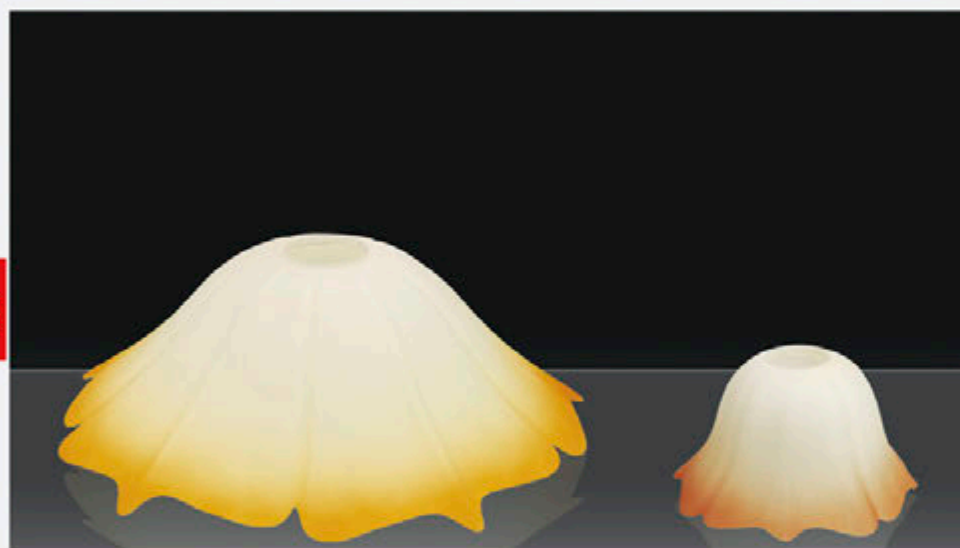
148-31 h:14 - Ø:37
148-A-31 h:12 - Ø:28
148-C-31 h:10 - Ø:18 (E27)

148-1 h:14 - Ø:37
148-A-1 h:12 - Ø:28
148-C-1 h:10 - Ø:18 (E27)



148-ALB h:14 - Ø:37
148-A-ALB h:12 - Ø:28

148-C-ALB h:10 - Ø:18(E27)



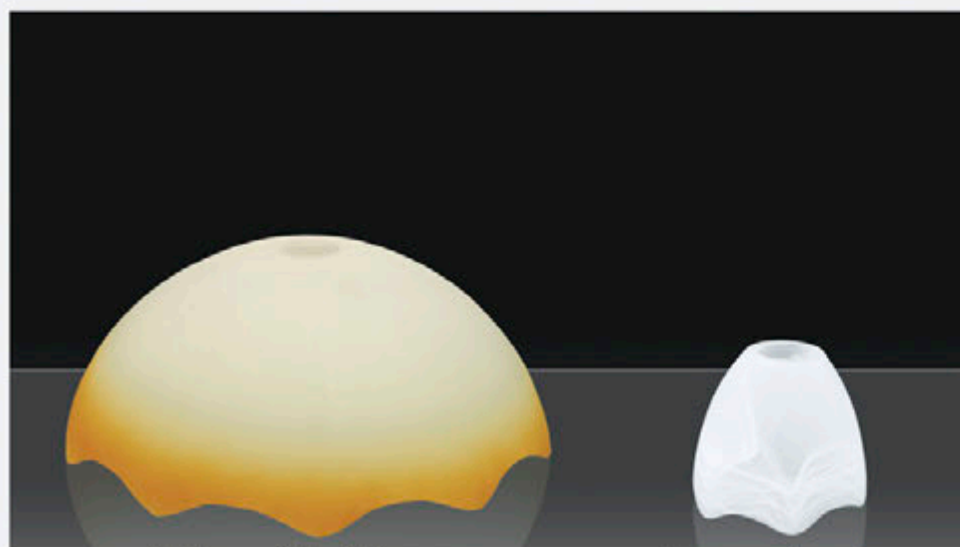
147-31 h:12 - Ø:31
147-A-31 h:10 - Ø:27

147-B-31 h:10 - Ø:18 (E27)



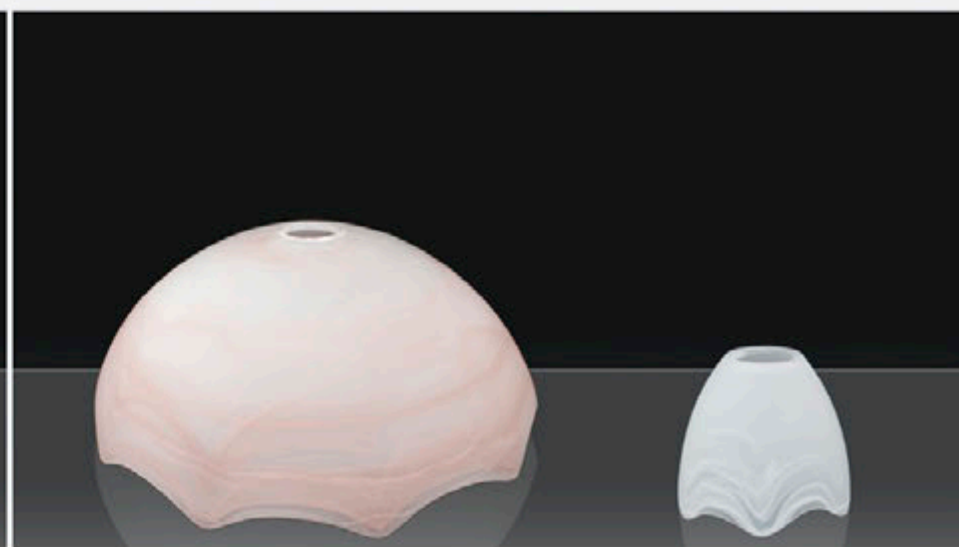
1191-A-31 h:14 - Ø:27

1191-B-31 h:12 - Ø:14(E27)



139-31 h:14 - Ø:36
139-A-31 h:12 - Ø:27
139-B-31 h:10 - Ø:13 (E27)

139-ALB h:14 - Ø:36
139-A-ALB h:12 - Ø:27
139-B-ALB h:10 - Ø:13(E27)

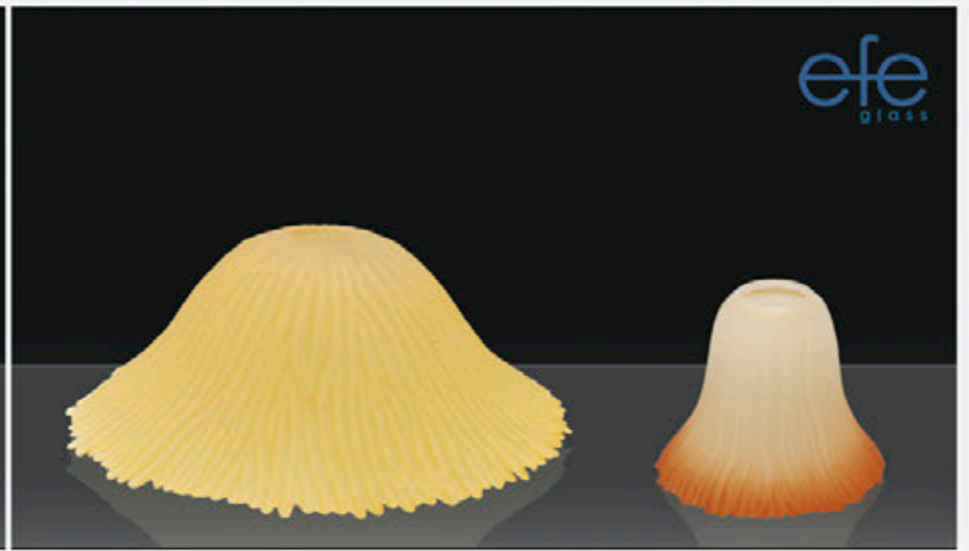


139-ALB h:14 - Ø:36
139-A-ALB h:12 - Ø:27

139-B-ALB h:10 - Ø:13(E27)



1112-1	h:11 - Ø:40	1112-31	h:11 - Ø:40
1112-A-1	h:12 - Ø:28	1112-A-31	h:12 - Ø:28
1112-B-1	h:11 - Ø:18 (E27)	1112-B-31	h:11 - Ø:18 (E27)
1112-C-1	h:12 - Ø:16 (E27)	1112-C-31	h:12 - Ø:16 (E27)



1193-1	h:14 - Ø:40	1193-31	h:14 - Ø:40
1193-C-1	h:13 - Ø:15 (E27)	1193-C-31	h:13 - Ø:15 (E27)



112-31	h:14 - Ø:38	112-C-31	h:11 - Ø:15 (E27)
112-A-31	h:12 - Ø:30	112-D-31	h:10 - Ø:16 (E27)



112-31	h:14 - Ø:38	112-D-1	h:10 - Ø:16 (E27)
112-A-31	h:12 - Ø:30	112-C-1	h:11 - Ø:15 (E27)



114-ALB	h:14 - Ø:34	114-B-ALB	h:10 - Ø:18 (E27)
114-A-ALB	h:12 - Ø:25		

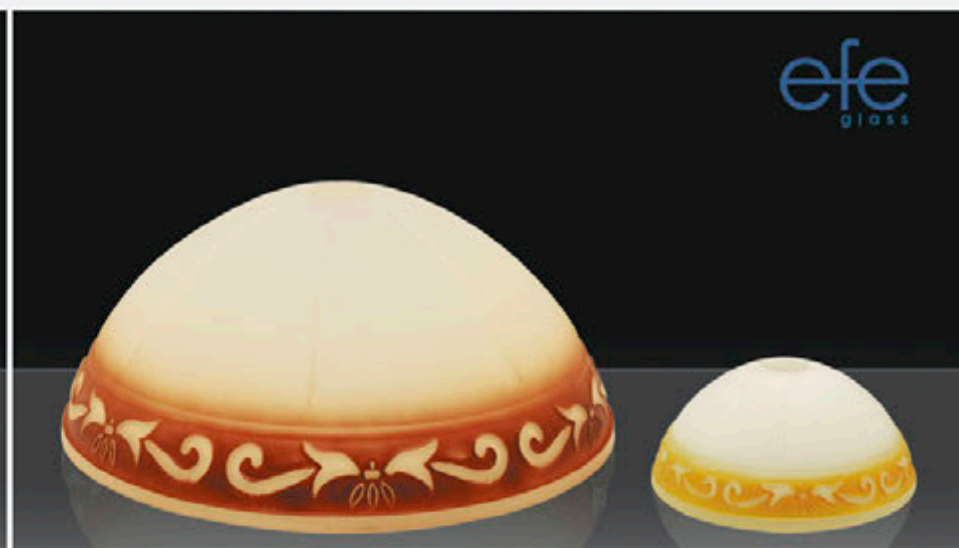


126-1	h:16 - Ø:32	126-A-1	h:16 - Ø:22
-------	-------------	---------	-------------



1126-1-FS h:16 - Ø:35
1126-30-1-FS h:14 - Ø:29
1126-A-1-FS h:12 - Ø:25

1126-B-1-FS h:12 - Ø:18 (E-27)
1126-C-1-FS h:13 - Ø:11 (E-27)



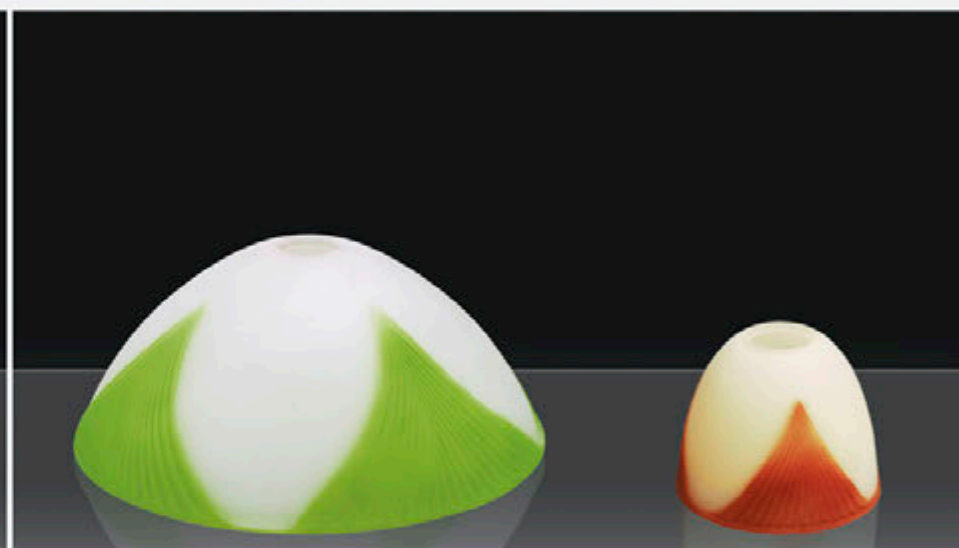
1145-31-S h:16 - Ø:38
1145-A-31-S h:12 - Ø:30
1145-B-31-S h:11 - Ø:26 (E27)

1145-D-31-S h:9 - Ø:16 (E-27)
1145-C-31-S h:12 - Ø:14 (E-27)



1037-31 S h:13 - Ø:37
1037-A-31 S h:12 - Ø:25

1037-B-31 S h:9 - Ø:17 (E-27)



144-31 h:15 - Ø:36
144-A-31 h:13 - Ø:26
144-B-31 h:11 - Ø:14 (E27)

144-31 h:15 - Ø:36
144-A-31 h:13 - Ø:26
144-B-31 h:11 - Ø:14 (E27)



093-1-Y h:13 - Ø:38
093-A-1-Y h:12 - Ø:25
093-B-1-Y h:9 - Ø:17 (E27)

093-31-Y h:13 - Ø:38
093-A-31-Y h:12 - Ø:25
093-B-31-Y h:9 - Ø:17 (E27)



146-3-1 S h:16 - Ø:35
146-A-3-1 S h:11 - Ø:25

146-B-3-1 S h:9 - Ø:17 (E27)



132-3-Y h:14 - Ø:38
132-A-3-Y h:12 - Ø:26
132-B-3-Y h:11 - Ø:17 (E27)



132-31-Y h:14 - Ø:38
132-A-31-Y h:12 - Ø:26
132-B-31-Y h:11 - Ø:17 (E27)



134-31-Y h:12 - Ø:44
134-A-31-Y h:9 - Ø:25
134-B-31-Y h:8 - Ø:19



134-3-Y h:18 - Ø:44
134-A-3-Y h:9 - Ø:25
134-B-3-Y h:8 - Ø:19 (E27)

107-45-1 h:10 - Ø:45
1007-40-1 h:10 - Ø:40
1007-35-1 h:10 - Ø:35
1007-30-1 h:10 - Ø:30
1007-25-1 h:10 - Ø:25
1007-20-1 h:10 - Ø:20



1007-16-1 h:10 - Ø:16 (E-27)



1133-1 h:13,5 - Ø:40
1133-A-1 h:12 - Ø:30



1133-B-1 h:10 - Ø:16 (E27)



133-1 h:12 - Ø:42
133-A-1 h:9 - Ø:26



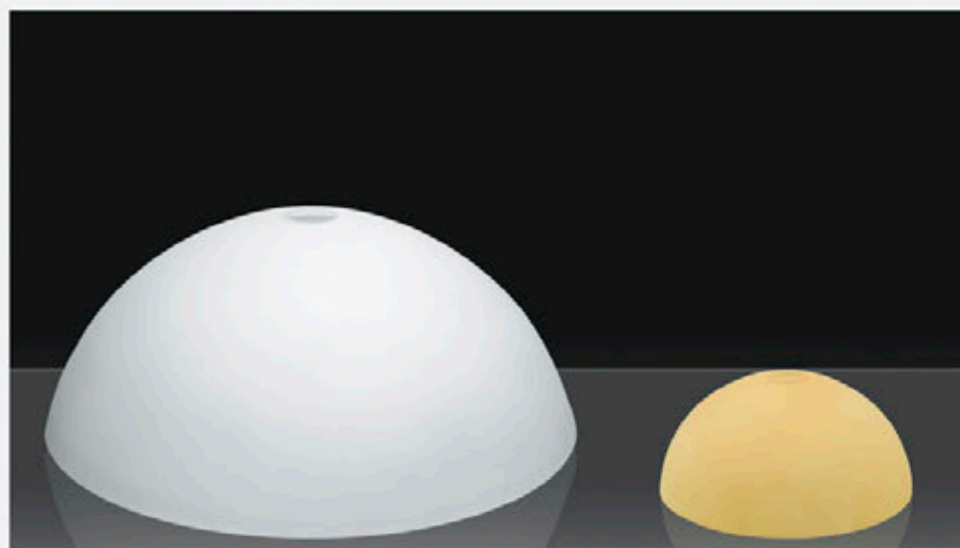
133-B-1 h:7 - Ø:17 (E27)



1137-1 h:13 - Ø:37



1137-A-1 h:9 - Ø:26



1006-1 h:14 - Ø:40
106-1 h:15 - Ø:36
1006-A-1 h:13 - Ø:30

1006-B-1 h:10 - Ø:16 (E27)
106-C-1 h:11 - Ø:14 (E27)



1006-ALB h:14 - Ø:40
106-ALB h:15 - Ø:36
106-A-ALB h:10 - Ø:22
1006-A-ALB h:13 - Ø:30

1006-B-ALB h: 9 - Ø:16(E27)
106-C-ALB h:11 - Ø:14(E27)



105-ALB h:15 - Ø:37
105-A-ALB h:11 - Ø:28

105-C-ALB h:9 - Ø:17
105-D-ALB h:11 - Ø:15(E27)



1038-ALB-1 h:16 - Ø:45

1038-3-ALB-Y h:16 - Ø:45



1006-3-ALB-Y h:14 - Ø:40
1006-A-3-ALB-Y h:13 - Ø:30

1006-3-Y h:14 - Ø:40
106-3-Y h:15 - Ø:36

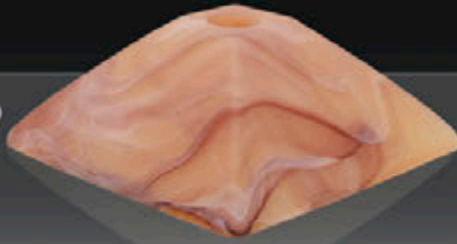


1137-ALB-1 h:13 - Ø:37

1137-3-ALB-Y h:13 - Ø:37



44 - ALB h:11 - Ø:28
44 - A- ALB h:9 - Ø:23



44 - 1- ALB h:11 - Ø:28
44 - A- 1- ALB h:9 - Ø:23



1034 ALB - 1 h:16 - Ø:37



1034-3-ALB-Y h:16 - Ø:37



1036 ALB - 1 h:16 - Ø:37



1036-3-ALB-Y h:21 - Ø:40



1039 ALB - 1 h:20 - Ø:32
1039 A- ALB-1 h:16 - Ø:22
1039 B- ALB-1 h:12 - Ø:16



1039-3-ALB-Y h:20 - Ø:32
1039-A-3-ALB-Y h:16 - Ø:22



1147 - ALB - 1 h:18 - Ø:34
1147 - A- ALB - 1 h:13 - Ø:26



1147-3-ALB-Y h:18 - Ø:34
1147-A-ALB-Y h:13 - Ø:26



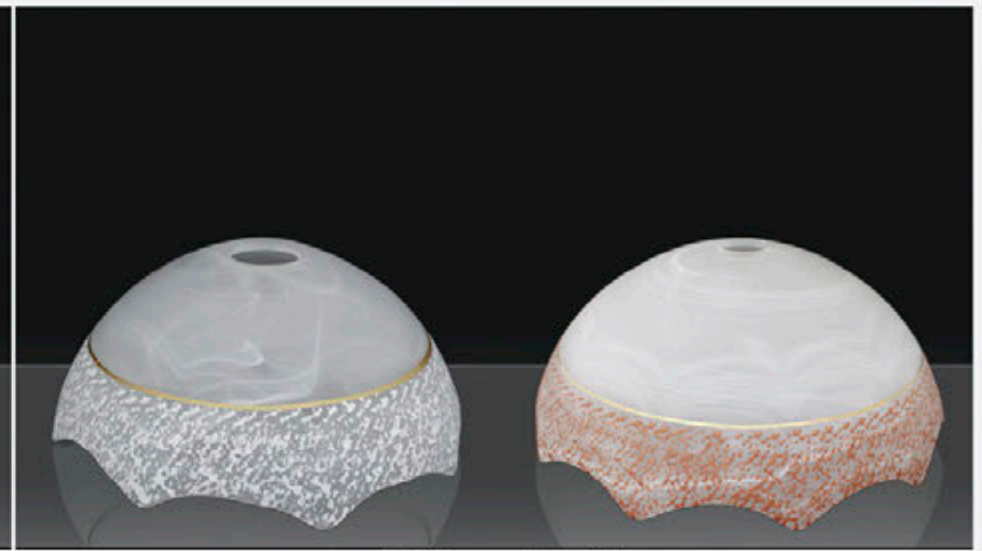
1106 - ALB - 1 h:29 - Ø:30



1106-3-ALB-Y h:29 - Ø:30



106-OYP h:15 - Ø:16
 1006-A-OYP h:13 - Ø:30
 106-A-OYP h:10 - Ø:22



139-YP h:14 - Ø:36
 139-A-YP h:12 - Ø:27

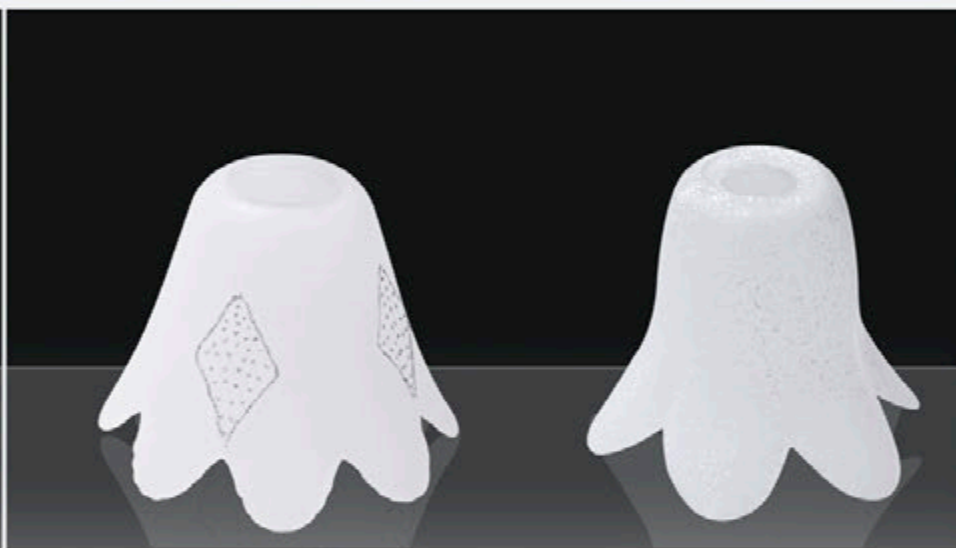
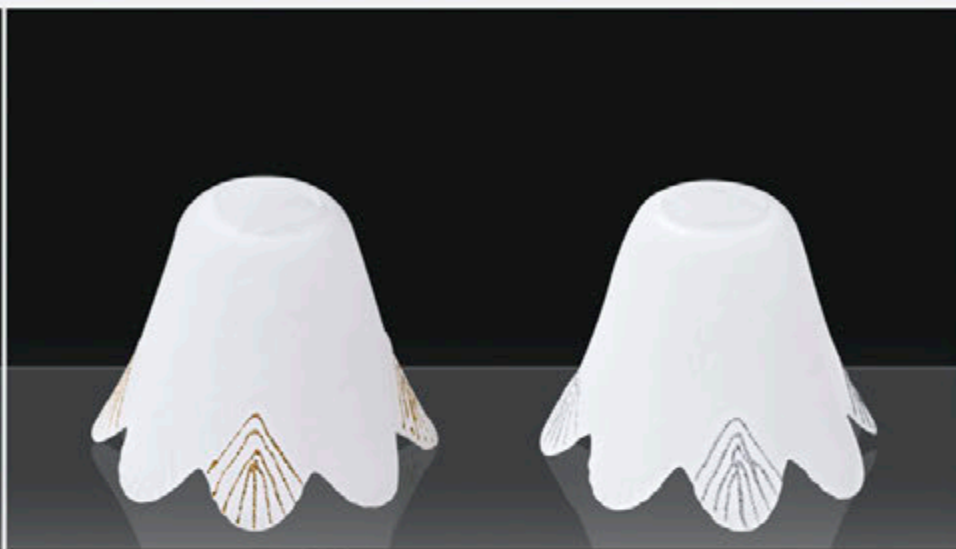


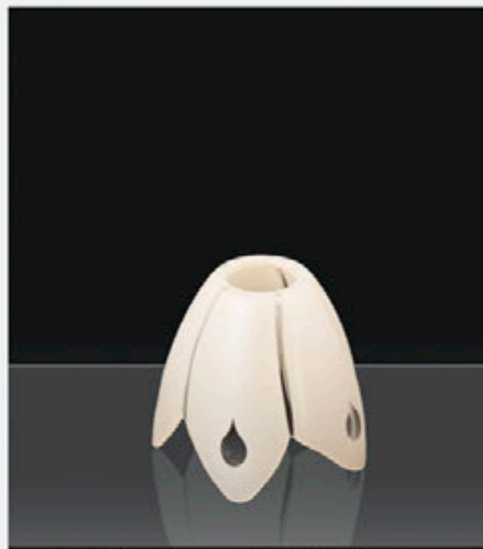
105-YP h:15 - Ø:37
 105-A-YP h:11 - Ø:28



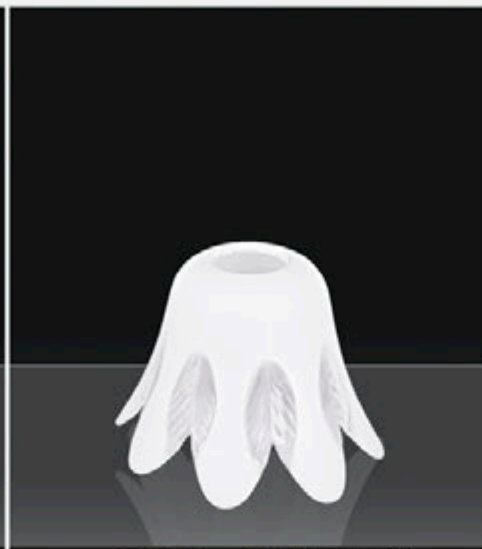
1147-OYP h:18 - Ø:34
 1147-A-OYP h:13 - Ø:26







1160-B-5 h:11 - Ø:14 (E27)



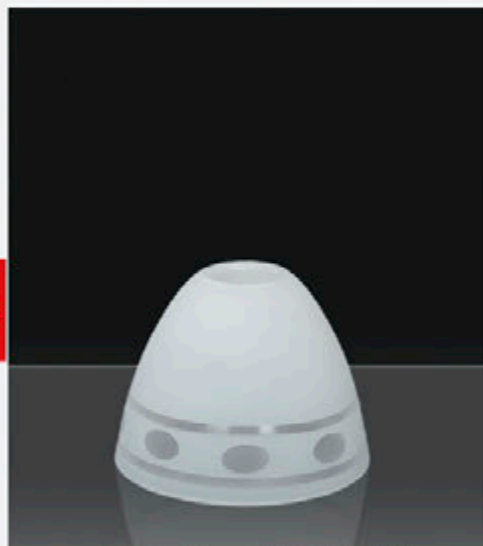
1211-B-5 h:12 - Ø:15 (E27)



1189-B-5 h:11 - Ø:14 (E27)



1180-B-5 h:12 - Ø:15 (E27)



106-C-5-32 h:11 - Ø:14 (E27)



1212-B-5 h:12 - Ø:15 (E27)



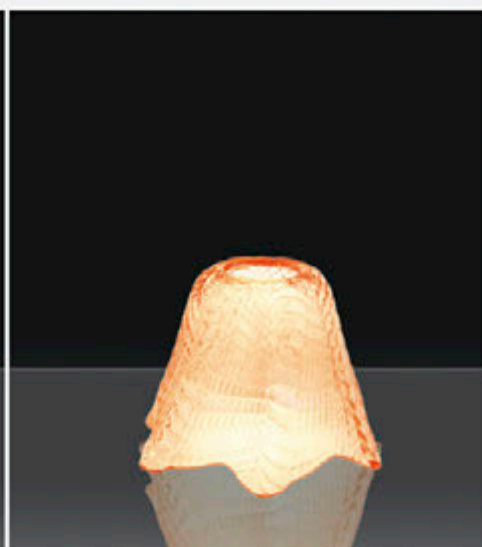
077-5 h:19 - Ø:12 (E27)
077-B-5 h:12 - Ø:8 (E14)



091-B-5 h:11 - Ø:13



1178-B-1-6 h:11 - Ø:15 (E27)



1177-B-1-6 h:11 - Ø:15 (E27)



1179-B-1-6 h:11 - Ø:15 (E27)



1209-B-1-MS h:12-Ø:15

1209-B-31-FS h:12-Ø:15

1209-B-1-TS h:12-Ø:15



1177-B-1-FS h:11-Ø:15

1177-B-31 h:11-Ø:15



1208-C-31-FS h:12-Ø:16



1180-B-FS h:12-Ø:15

1180-B-31 h:12-Ø:15



1207-C-MS h:12-Ø:15



1197-B-1 h:11 - Ø:13(E-27)
1197-C-1 h:10 - Ø:11(E-14)



1198-C h:10 - Ø:11 (E-14)



1181-B-1 h:12 - Ø:15 (E-27)



037-3 h:16 - Ø:11(E-27)



081-C-1 h:10 - Ø:15 (E-27)



1153-D-1 h:11 - Ø:14 (E-27)



094-1 h:12 - Ø:16(E-27)

094-ALB h:12 - Ø:16(E-27)



097-31 h:12 - Ø:16(E-27)

097-1 h:12 - Ø:16(E-27)



077-ALB h:19 - Ø:12(E-27)
077-B-ALB h:12 - Ø:8(E-14)



077-1 h:19 - Ø:12(E-27)
077-B-1 h:12 - Ø: 8(E-14)



098-ALB h:12 - Ø:16(E-27)
098-C-ALB h:10 - Ø:11(E-14)



098-1-ALB h:12 - Ø:16(E-27)
098-C-1-ALB h:10 - Ø:11(E-14)



101-D-ALB
h:11 - Ø:13(E-27)



101-D-1
h:11 - Ø:13(E-27)



101-C-31
h:12 - Ø:14(E-27)



101-C-1
h:12 - Ø:14(E-27)



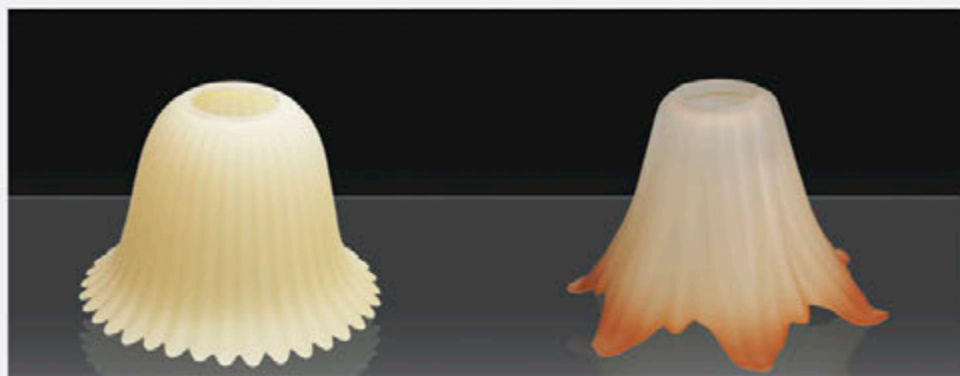
095-ALB h:12 - Ø:15



095-1 h:12 - Ø:15



095-31 h:12 - Ø:15



103-D-1
h:10 - Ø:15(E-27)



1199-C-31
h:11 - Ø:12 (E-14)



0024-ALB
h:12 - Ø:10(E-14)



0035-1
h:10 - Ø:13 (E-14)

e fe
glass



www.efecam.com.tr
www.efeglass.com

Armatür Camları

Plaffonier Glass

Renk

Mavi - Yeşil - Şeffaf - Pembe - Lila - Somon - Amber -
Açık Yeşil - Açık Pembe - Açık Lila

Color

Blue - Green - Clear - Pink - Lilac - Salmon - Amber
Light Green - Light Pink - Light - Lilac





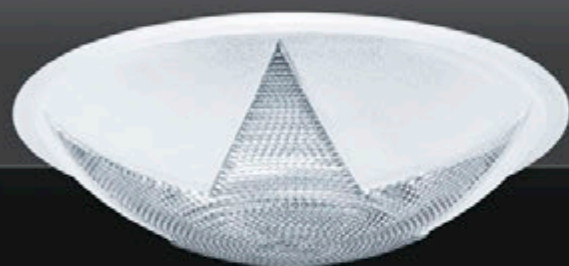
2114-40-5 h:11 - Ø:40
2114-30-5 h: 7 - Ø:30



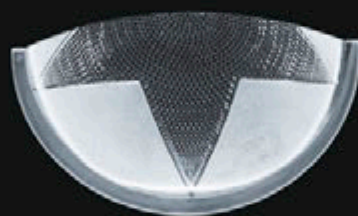
2108-40-5 h:8 - Ø:40
2108-30-5 h:7 - Ø:30



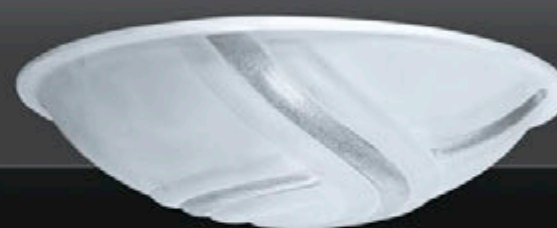
2108-30-2-5 h:7 - Ø:30-15



2113-40-5 h:11 - Ø:40
2113-30-5 h:7 - Ø:30



2113-30-2-5 h:7 - Ø:30-15



2116-40-5 h:11 - Ø:40
2116-30-5 h:7 - Ø:30
2116-25-5 h:7 - Ø:25



2116-30-2-5 h:7 - Ø:30-15



2117-40-5 h:11 - Ø:40
2117-30-5 h:7 - Ø:30
2117-25-5 h:7 - Ø:25



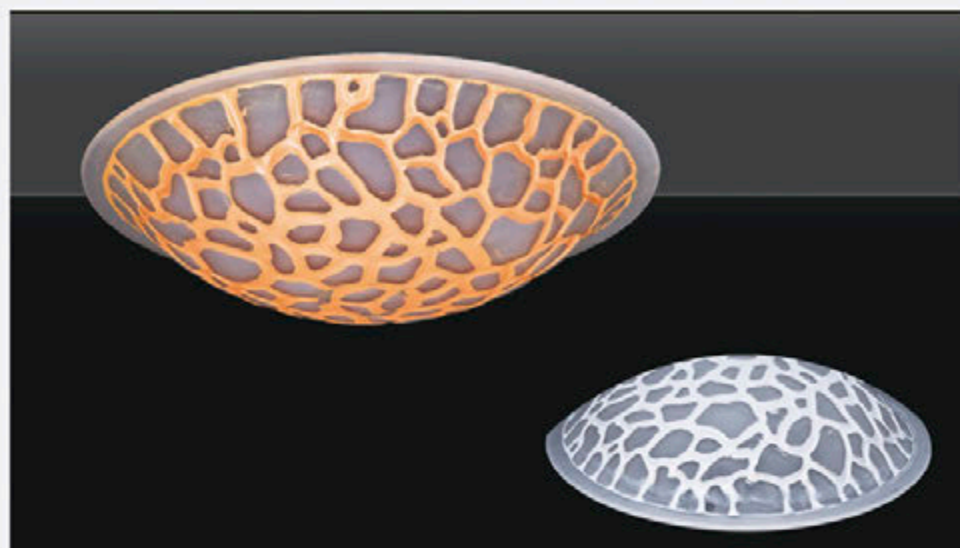
2117-30-2-5 h: 7 - Ø:30-15



2118-40-5 h:11 - Ø:40
2118-30-5 h: 7 - Ø:30
2118-25-5 h: 7 - Ø:25



2118-30-2-5 h: 7 - Ø:30-15



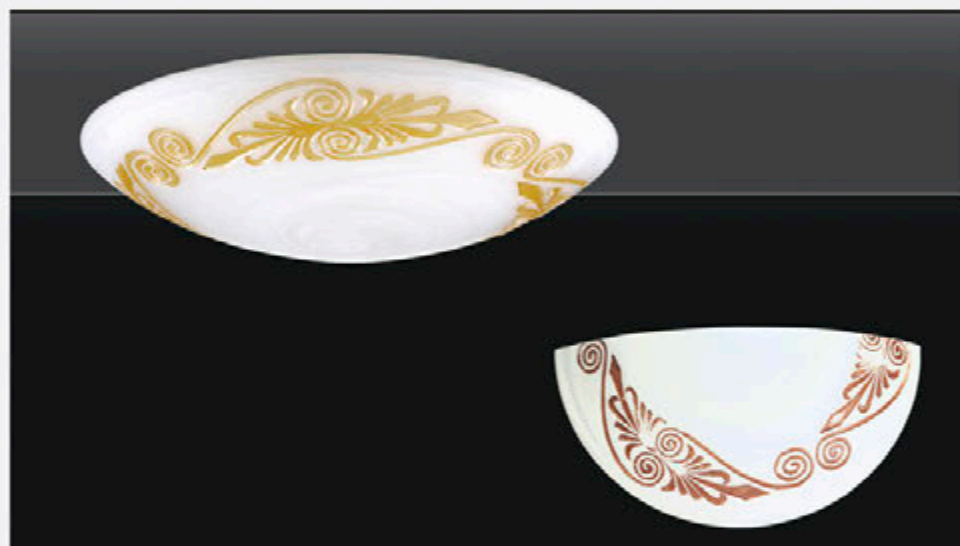
2176-40-1-MS h:11 - Ø:40
2176-30-1MS h: 7 - Ø:30

2176-30-1-2-MS h: 7 - Ø: 30-15



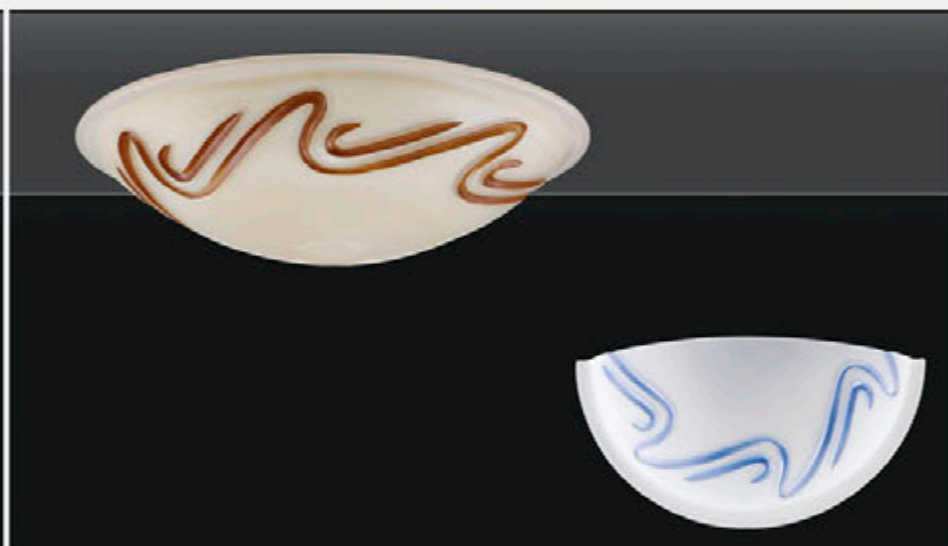
2130-40-3-MS h:11 - Ø:40
2130-30-3-MS h: 7 - Ø:30

2130-30-3-2-MS h:7 - Ø:30-15



2125-40-3 SP h:11 - Ø:40
2125-30-3 SP h: 7 - Ø:30

2125-30-3-2 SP h:7 - Ø:30-15



2120-40-31 S h:11 - Ø:40
2120-30-31 S h: 7 - Ø:30
2120-25-31 S h: 7 - Ø:25

2120-30-31-2 S h: 7 - Ø:30-15



2126-40-1 FS h:11 - Ø:40
2126-30-1 FS h: 7 - Ø:30
2126-25-1 FS h: 7 - Ø:25

2126-30-1-2 FS h: 7 - Ø:30-15



2128-40-3-FS h:11 - Ø:40
2128-30-3-FS h: 7 - Ø:30

2128-30-3-2-FS h: 7 - Ø:30-15



2127-40-3-FS h:11 - Ø:40
2127-30-3-FS h:30 - Ø:30

2127-30-3-2-FS h:7 - Ø:30-15



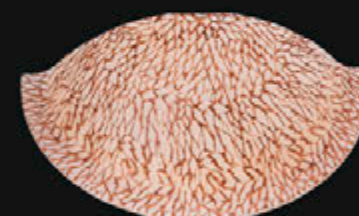
2173-40-3-F-S h:11 - Ø:40
2173-30-1-F-S h: 7 - Ø:30

2173-30-1-F-S h:7 - Ø:30-15



2171-40-1-F-S h:11 - Ø:40
2171-30-1-F-S h:7 - Ø:30

2171-30-1-2 h:7 - Ø:30-15



2172-40-1-FS h:11 - Ø:40
2172-30-1-FS h: 7 - Ø:30

2172-30-1-2-FS h:7 - Ø:30-15



2129-40-31 SP h:11 - Ø:40
2129-30-31 SP h: 7 - Ø:30

2129-30-31-2 SP h:7 - Ø:30-15

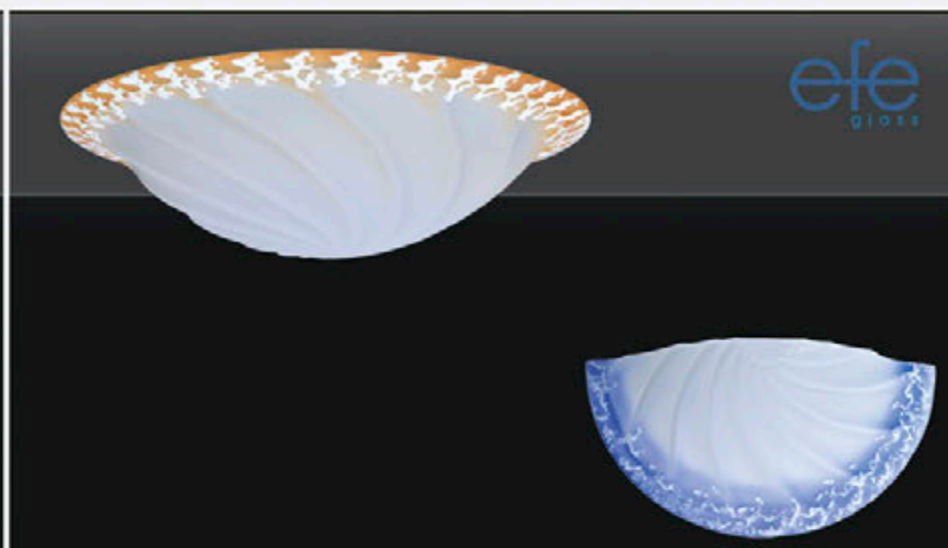


2131-40-31 SP h:11 - Ø:40
2131-30-31 SP h: 7 - Ø:30

2131-30-31-2 SP h:7 - Ø:30-15



2124-40-1 FS h:11 - Ø:40
2124-30-1 FS h: 7 - Ø:30



efe
GLOSS

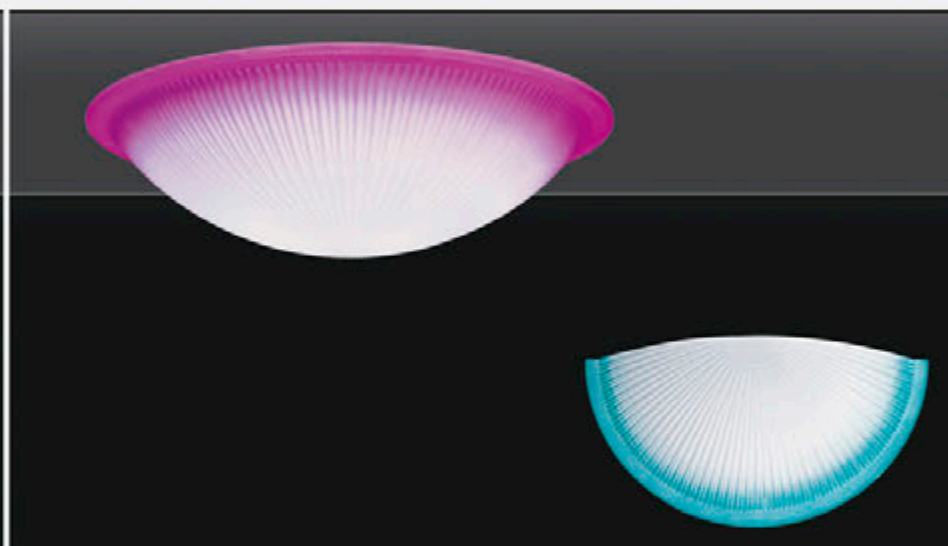
2112-40-31 h:11 - Ø:40
2112-30-31 h: 7 - Ø:30
2112-25-31 h: 7 - Ø:25

2112-30-31-2 h: 7 - Ø:30-15



218-50-3-Y h:13 - Ø:50
218-40-3-Y h:11 - Ø:40
218-30-3-Y h: 7 - Ø:30
218-25-3-Y h: 7 - Ø:25

218-30-3-2-Y h:7 - Ø:30-15



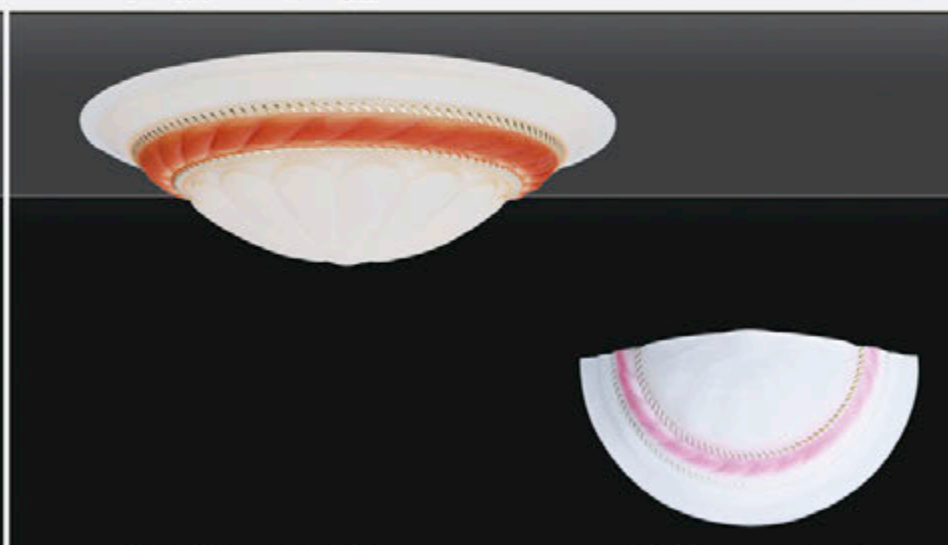
2111-50-3 h:13 - Ø:50
2111-40-3 h: 11 - Ø:40
2111-30-3 h: 7 - Ø:30
2111-25-3 h: 7 - Ø:25

2111-30-3-2 h: 7 - Ø:30-15



2120-40-31 h:11 - Ø:40
2120-30-31 h: 7 - Ø:30
2120-25-31 h: 7 - Ø:25

2120-30-31-2 h: 7 - Ø:30-15



129-50-31-Y h:13 - Ø:50
129-40-31-Y h:11 - Ø:40
129-30-31-Y h: 7 - Ø:30
129-25-31-Y h: 7 - Ø:25

129-30-3-2-Y h: 7 - Ø:30-15



2177-40-31 h:11 - Ø:40
2177-30-31 h:7 - Ø:30

2177-30-1-2 h:7 - Ø:30-15



2116-40-51 h:11 - Ø:40
2116-30-51 h: 7 - Ø:30
2116-25-51 h: 7 - Ø:25

2116-30-51-2 h:7 - Ø:30-15



2141-25- Sensör Camı
h:9 - Ø:25



127-30-ALB Sensör Camı
h:9 - Ø:30



2111-25- Sensör Camı
h:9 - Ø:25



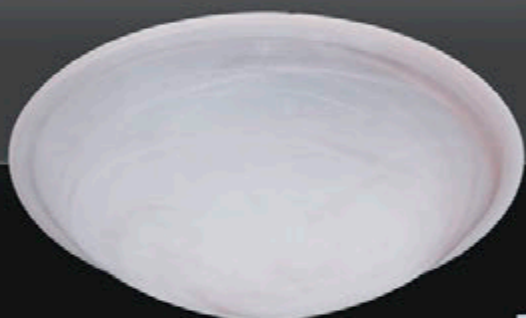
2109-40-3 S h:11 - Ø:40
2109-30-3 S h: 7 - Ø:30
2109-25-3 S h: 7 - Ø:25

2109-30-3-2 S h:7 - Ø:30-15



212-50-3 h:13 - Ø:50
212-40-3 h:11 - Ø:40
212-30-3 h: 7 - Ø:30
212-25-3 h: 7 - Ø:25

212-30-3-2 h:7 - Ø:30-15



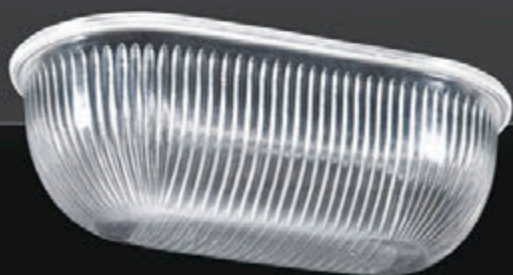
127-50- ALB h:13 - Ø:50
127-40- ALB h:11 - Ø:40
127-30- ALB h: 7 - Ø:30
127-25- ALB h: 7 - Ø:25

127-30-2 ALB h:7 - Ø:30-15



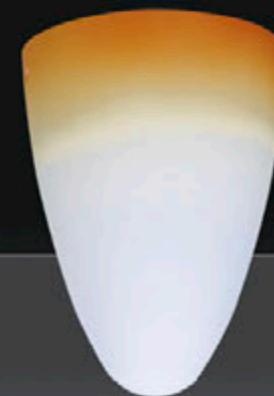
2117-40-51 h:11 - Ø:40
2117-30-51 h: 7 - Ø:30
2117-25-51 h: 7 - Ø:25

2117-30-51-2 h:7 - Ø:30-15



014-A h:7 - Ø:22-10
014-B h:7 - Ø:17-10

015 h:13 - Ø:10

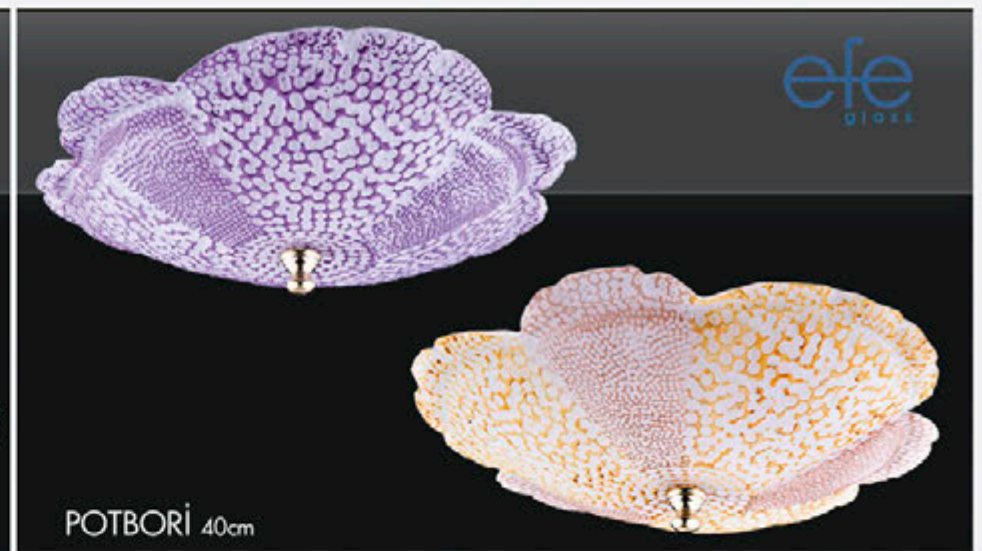


021-1-2 h:24 - Ø:16
021-A-1-2 h:20 - Ø:15

021-31-2 h:24 - Ø:16
021-A-31-2 h:20 - Ø:15



MUSHROOM 40cm



POTBORI 40cm



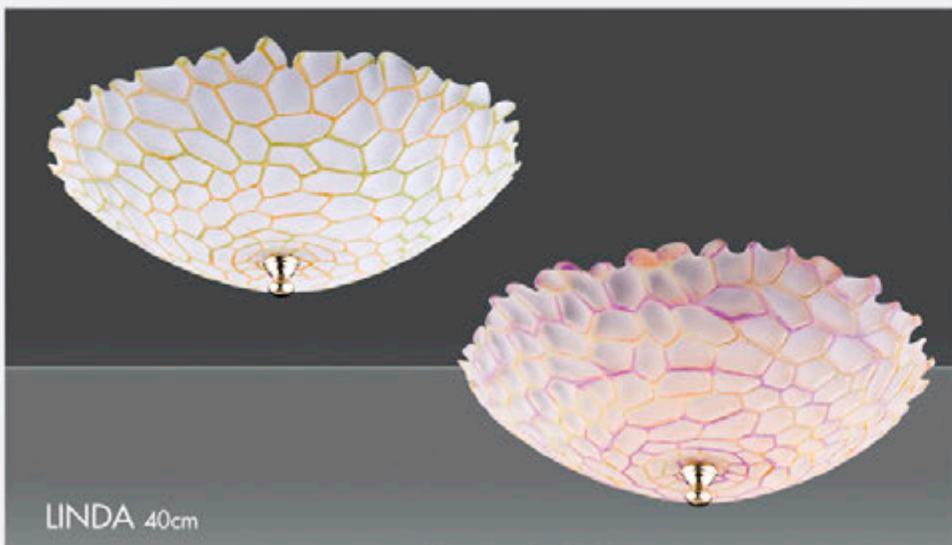
VEINY 40cm



CORAL 40cm

1942 A-1
1942 B-1

h:22 - Ø:30
h:20 - Ø:25



LINDA 40cm



ANEMON 38cm

1933 A-1 h:15 - Ø:30
1933 B-1 h:12 - Ø:25
1933 C-1 h:12 - Ø:19

1910 C-1 Ø:20

1910 A-1 Ø:30
1910 B-1 Ø:25
1910 D-1 h: 15 - Ø:18
1910 E-1 h: 12 - Ø:14 (E27)



FALL 40cm

123-A-1 h:19- Ø:20
123-B-1 h:12- Ø:13 (E-14)



EFE 7 40cm

113-C-1
h:10- Ø:11 (E-14)



KUMRU 40cm

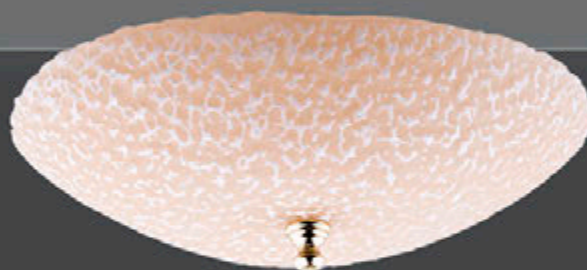
305-Y-1
h:13 - Ø:9 (E-14)

2009 -1 h:18- Ø:19
2009-A-1 h:12- Ø:12 (E-27)
2009-B-1 h:10- Ø:10 (E-14)



NEVBAHAR 40cm

1921-1 h:18- Ø:17
1921-B-1 h:13- Ø:11(E-27)



POPCORN 40cm

117-1 h:18- Ø:32
117-A-1 h:17- Ø:25
117-B-1 h:14- Ø:14 (E-27)



RIBLE 40cm

116-C-1 h:13- Ø:12 (E-27)
1116-C-1 h:10- Ø:9 (E-14)

110-1 h:25- Ø:23
110-A-1 h:13- Ø:14(E-27)



EFE 8 38cm

444-1 h:23 - Ø:15
444-A-1 h:20 - Ø:11
444-B-1 h:18 - Ø:9 (E-27)



333-B-1 h:29- Ø:14
333-C-1 h:29- Ø:10
333-E-1 h:15- Ø:10 (E-27)



ELEGANCE 40cm

2007-1 h:30- Ø:10-15
2007-A-1 h:16- Ø:10-15 (E-27)

023-1 h:17 - Ø:11

Renk

Bal - Şeffaf - Pembe - Lila

Color

Honey - Clear - Pink - Lilac



141 Bal
h:13 - Ø:12

141 Mat
h:13 - Ø:12 (E27)

141-A Bal
h:12 - Ø:10 (E27)

141-A Mat
h:12 - Ø:10 (E27)



1691 Bal Çatlak
h:15 - Ø:10

155 - Mat
h:13 - Ø:16

154 - Mat
h:12 - Ø:12



EFECAM SAN. İTH.İHR. VE TİC. LTD. ŞTİ.

EFECAM SAN. DIŞ.TİC.LTD.ŞTİ.

Fabrika : Karadeniz Mah. Cebeci Cad. No:161 Küçükköy G.O.Paşa - İST / TURKEY
Tel: (+90212) 618 01 38 - 479 51 51 Fax: (+90212) 477 27 88
Showroom : Emekyemez Mah. Şişhane Sk. No:29 Karaköy - İST / TURKEY
Tel: +90212 254 42 23 - 237 42 08 - 237 91 42 Fax: +90212 238 17 63

www.efecam.com.tr www.efeglass.com
info@efecam.com.tr export@efecam.com